



## UK Office

**Everest Biotech Ltd**  
Cherwell Innovation Centre  
77 Heyford Park  
Upper Heyford  
Oxfordshire  
OX25 5HD  
UK

Enquiries:

[info@everestbiotech.com](mailto:info@everestbiotech.com)

Sales:

[sales@everestbiotech.com](mailto:sales@everestbiotech.com)

Tech support:

[support@everestbiotech.com](mailto:support@everestbiotech.com)

Tel: +44 (0)1869 238326

Fax: +44 (0)1869 238327

## US Office

**Everest Biotech c/o Abcore**  
405 Maple Street, Suite A106  
Ramona,  
CA 92065  
USA

Inquiries:

[info@everestbiotech.com](mailto:info@everestbiotech.com)

Sales:

[usasales@everestbiotech.com](mailto:usasales@everestbiotech.com)

Tech support:

[support@everestbiotech.com](mailto:support@everestbiotech.com)

Tel: 888-320-4628 (toll-free)

Fax: 888-841-9041

[www.everestbiotech.com](http://www.everestbiotech.com)

**Research Use Only. Not for  
diagnostic or therapeutic use.**

## EB06112 - Goat Anti-FANCF Antibody

Size: 100µg specific antibody in 200µl



### Target Protein

**Principal Names:** FANCF, Fanconi anemia, complementation group F, FAF

**Official Symbol:** FANCF

**Accession Number(s):** NP\_073562

**Human GeneID(s):** [2188](#)

### Immunogen

Peptide with sequence C-RQVLGLSAGLSSV, from the C Terminus of the protein sequence according to NP\_073562.

Please note the [peptide](#) is available for sale.

### Purification and Storage

Purified from goat serum by ammonium sulphate precipitation followed by antigen affinity chromatography using the immunizing peptide.

Supplied at 0.5 mg/ml in Tris saline, 0.02% sodium azide, pH7.3 with 0.5% bovine serum albumin.

Aliquot and store at -20°C. Minimize freezing and thawing.

### Applications Tested

**Peptide ELISA:** antibody detection limit dilution 1:32000.

**Western blot:** In transfected HEK293 transiently expressing full-length Human FANCF (myc and DYKDDDDK tagged), a band of approx. 40kDa was observed. No bands were observed in mock-transfected HEK293 and the same band was observed using anti-myc tag antibody. Recommended concentration, 0.1-0.5µg/ml.

Purchase the +ve control! The transfected lysate used to QC this product is available for sale. Please email [sales@everestbiotech.com](mailto:sales@everestbiotech.com) to request datasheet, pricing and delivery information.

### Species Reactivity

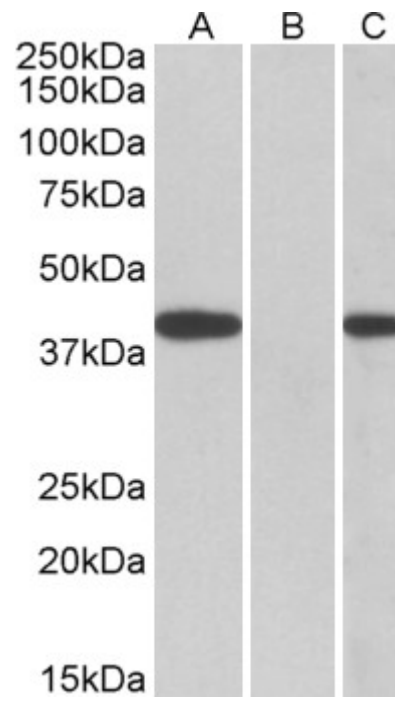
**Tested:** Human

**Expected from sequence similarity:** Human

### Specific Reference

**This antibody has been successfully used in the following paper:**

Jia Zhou, Camille Gelot, Constantia Pantelidou, Adam Li, Hatice Yücel, Rachel E. Davis, Anniina Farkkila, Bose Kochupurakkal, Aleem Syed, Geoffrey I. Shapiro, John A. Tainer, Brian S. J. Blagg, Raphael Ceccaldi, and Alan D. D'Andrea  
A first-in-class Polymerase Theta Inhibitor selectively targets Homologous-Recombination-Deficient Tumors.  
Nat Cancer. 2021 Jun; 2(6): 598-610.  
PMID: 34179826



HEK293 lysate (10ug protein in RIPA buffer) overexpressing Human FANCF with C-terminal MYC tag probed with EB06112 (0.5ug/ml) in Lane A and probed with anti-MYC Tag (1/1000) in lane C. Mock-transfected HEK293 probed with EB06112 (1mg/ml) in Lane B. Primary incubations were for 1 hour. Detected by chemiluminescence.