



UK Office

Everest Biotech Ltd

Cherwell Innovation Centre
77 Heyford Park
Upper Heyford
Oxfordshire
OX25 5HD
UK

Enquiries:

info@everestbiotech.com

Sales:

sales@everestbiotech.com

Tech support:

support@everestbiotech.com

Tel: +44 (0)1869 238326

Fax: +44 (0)1869 238327

US Office

Everest Biotech c/o Abcore

405 Maple Street, Suite A106
Ramona,
CA 92065
USA

Inquiries:

info@everestbiotech.com

Sales:

usasales@everestbiotech.com

Tech support:

support@everestbiotech.com

Tel: 888-320-4628 (toll-free)

Fax: 888-841-9041

www.everestbiotech.com

**Research Use Only. Not for
diagnostic or therapeutic use.**

EB09626 - Goat Anti-FAS / CD95 Antibody

Size: 100µg specific antibody in 200µl



Target Protein

Principal Names: FAS, Fas (TNF receptor superfamily, member 6), ALPS1A, APO-1, APT1, CD95, FAS1, FASTM, TNFRSF6, APO-1 cell surface antigen, CD95 antigen, Fas AMA, Fas antigen, OTTHUMP00000020045, OTTHUMP00000020046, OTTHUMP00000020051, OTTHUMP00000059646, apoptosis antigen 1, tumor necrosis factor receptor superfamily member 6, tumor necrosis factor receptor superfamily, member 6

Official Symbol: FAS

Accession Number(s): NP_000034.1; NP_690610.1; NP_690611.1

Human GeneID(s): [355](#)

Important Comments: This antibody is expected to recognize reported isoforms 1 (NP_000034.1), 2 (NP_690610.1) and 3 (NP_690611.1).

Immunogen

Peptide with sequence KTCRKHRKENQGSH, from the internal region of the protein sequence according to NP_000034.1; NP_690610.1; NP_690611.1.

Please note the [peptide](#) is available for sale.

Purification and Storage

Purified from goat serum by ammonium sulphate precipitation followed by antigen affinity chromatography using the immunizing peptide.

Supplied at 0.5 mg/ml in Tris saline, 0.02% sodium azide, pH7.3 with 0.5% bovine serum albumin.

Aliquot and store at -20°C. Minimize freezing and thawing.

Applications Tested

Peptide ELISA: antibody detection limit dilution 1:32000.

Western blot: Approx 37kDa band observed in lysates of cell line MOLT4 (calculated MW of 37.7kDa according to NP_000034.1). Recommended concentration: 0.1-0.3µg/ml.

Primary incubation was 1 hour.

IHC: Paraffin embedded Human Tonsil and Small Intestine. Recommended concentration: 3.75µg/ml.

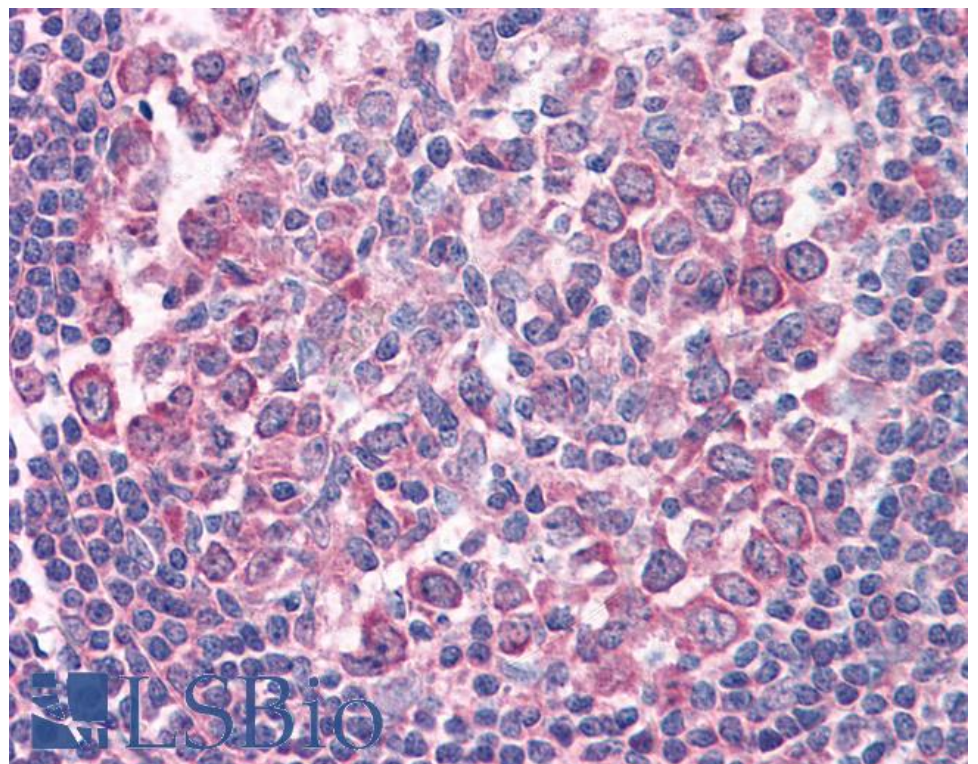
Species Reactivity

Tested: Human

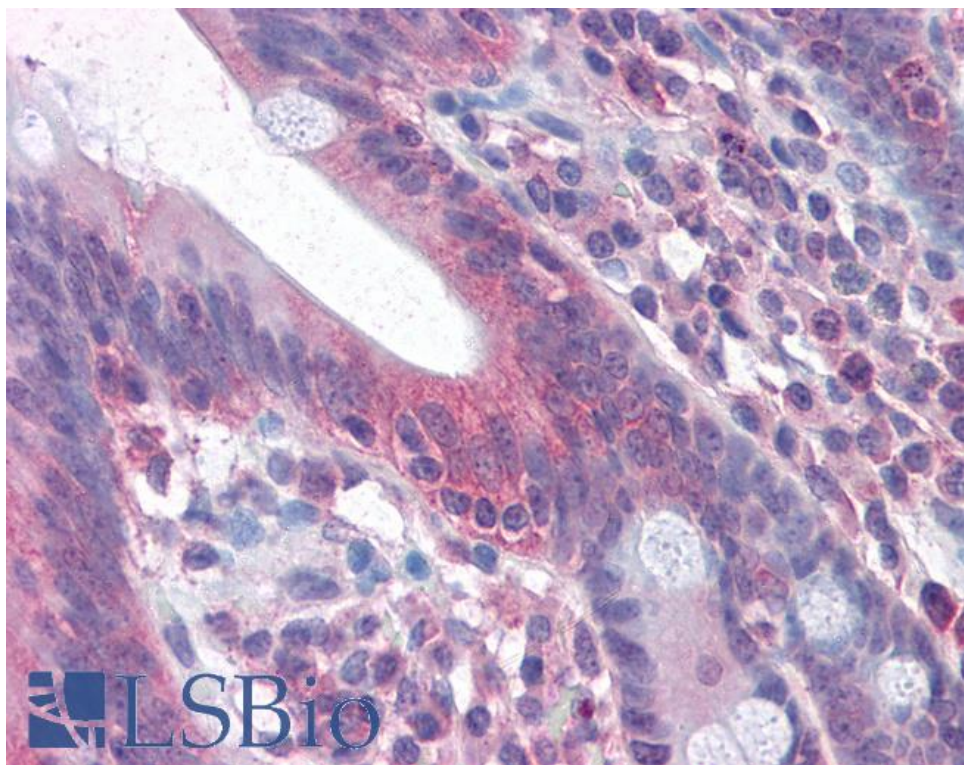
Expected from sequence similarity: Human



EB09626 (0.1µg/ml) staining of MOLT4 lysate (35µg protein in RIPA buffer). Detected by chemiluminescence.



EB09626 (µg/ml) staining of paraffin embedded Human Tonsil. Steamed antigen retrieval with citrate buffer pH 6, AP-staining.



EB09626 (3.75µg/ml) staining of paraffin embedded Human Small Intestine. Steamed antigen retrieval with citrate buffer pH 6, AP-staining.