



UK Office

Everest Biotech Ltd

Cherwell Innovation Centre
77 Heyford Park
Upper Heyford
Oxfordshire
OX25 5HD
UK

Enquiries:

info@everestbiotech.com

Sales:

sales@everestbiotech.com

Tech support:

support@everestbiotech.com

Tel: +44 (0)1869 238326

Fax: +44 (0)1869 238327

US Office

Everest Biotech c/o Abcore

405 Maple Street, Suite A106
Ramona,
CA 92065
USA

Inquiries:

info@everestbiotech.com

Sales:

usasales@everestbiotech.com

Tech support:

support@everestbiotech.com

Tel: 888-320-4628 (toll-free)

Fax: 888-841-9041

www.everestbiotech.com

**Research Use Only. Not for
diagnostic or therapeutic use.**

EB06041 - Goat Anti-FBL2 / FBXL2 Antibody

Size: 100µg specific antibody in 200µl



Target Protein

Principal Names: FBXL2, FBL2, F-box and leucine-rich repeat protein 2, FBL3, DKFZP564P0622, F-box protein containing leucine-rich repeats

Official Symbol: FBXL2

Accession Number(s): NP_036289.2

Human GeneID(s): [25827](#)

Immunogen

Peptide with sequence VFSNNDEGLINKK-C, from the N Terminus of the protein sequence according to NP_036289.2.

Please note the [peptide](#) is available for sale.

Purification and Storage

Purified from goat serum by ammonium sulphate precipitation followed by antigen affinity chromatography using the immunizing peptide.

Supplied at 0.5 mg/ml in Tris saline, 0.02% sodium azide, pH7.3 with 0.5% bovine serum albumin.

Aliquot and store at -20°C. Minimize freezing and thawing.

Applications Tested

Peptide ELISA: antibody detection limit dilution 1:128000.

Western blot: Preliminary testing showed a band at approx 48kDa in Human Kidney lysate after 0.1µg/ml antibody staining (calculated MW of 47.1kDa according to NP_036289.2). Primary incubation 1 hour at room temperature.

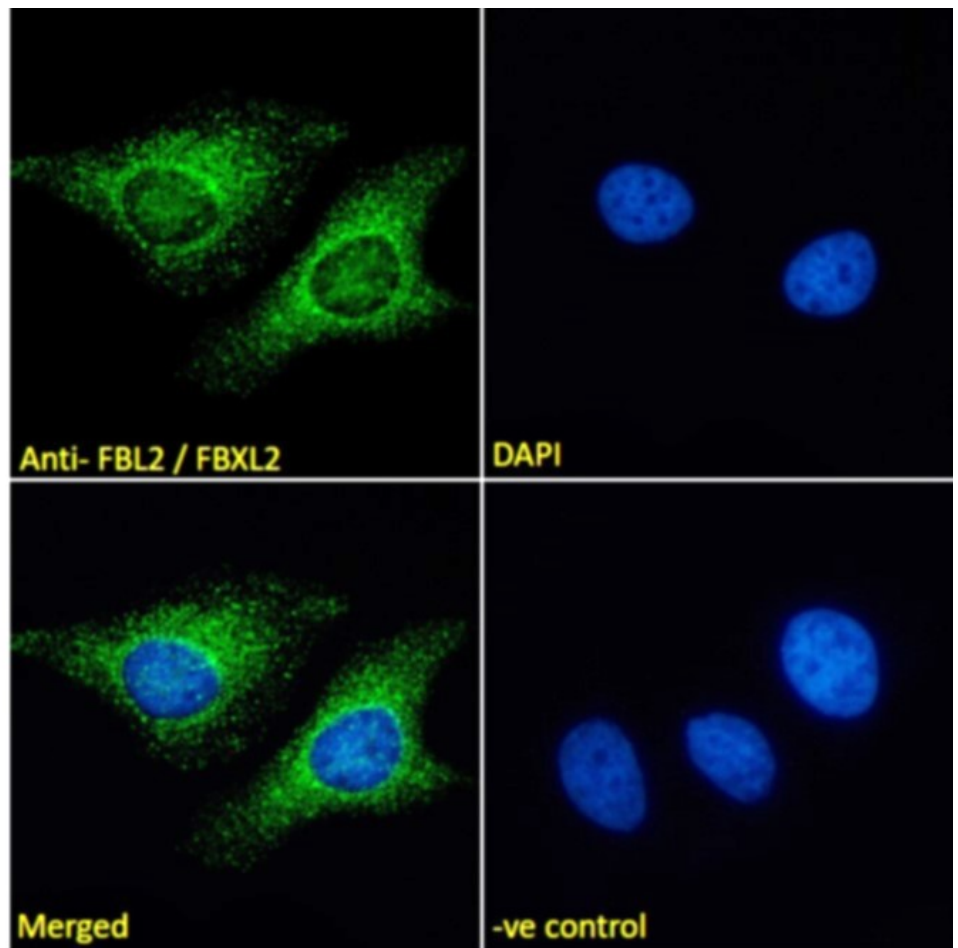
IHC: Paraffin embedded Human Cortex. Recommended concentration: 8µg/ml.

Immunofluorescence: Strong expression of the protein seen in the cytoplasm of HeLa cells. Recommended concentration: 10µg/ml.

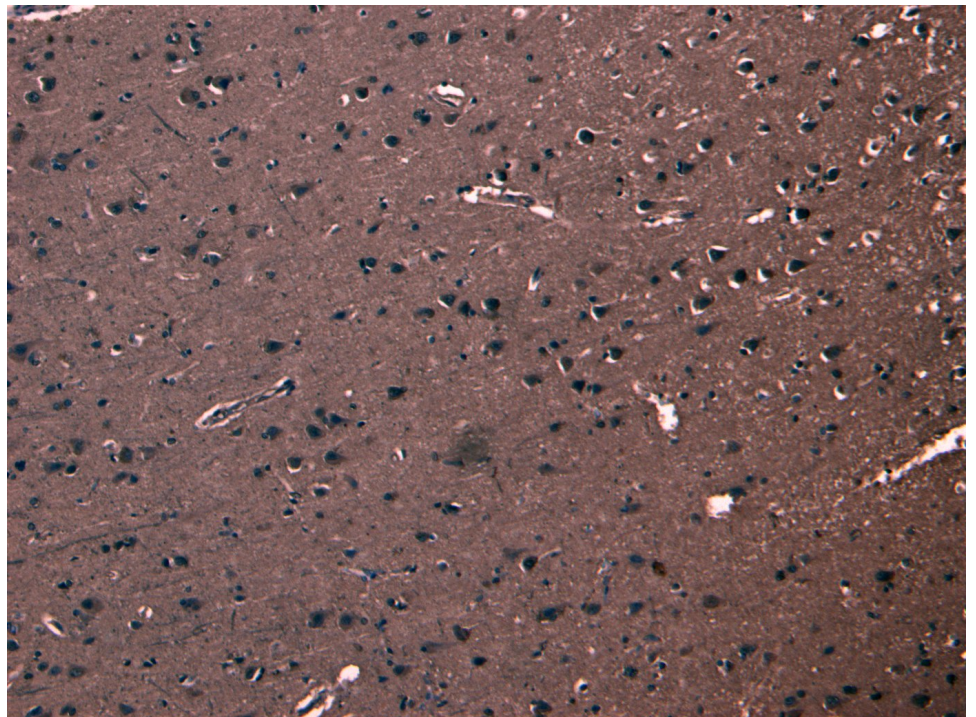
Species Reactivity

Tested: Human

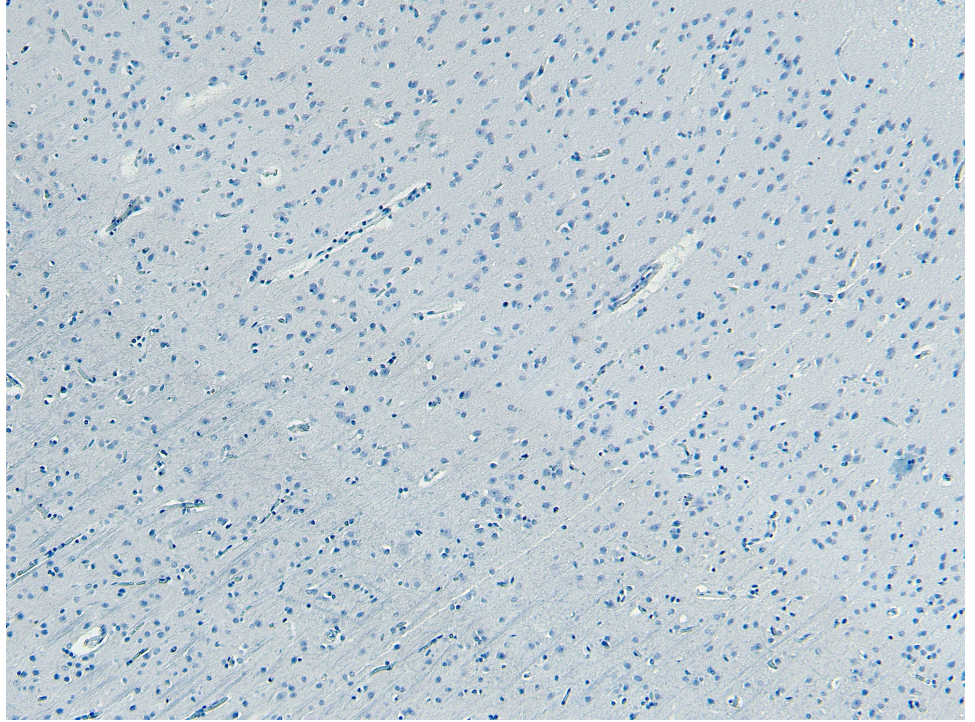
Expected from sequence similarity: Human, Rat, Dog, Cow



EB06041 Immunofluorescence analysis of paraformaldehyde fixed HeLa cells, permeabilized with 0.15% Triton. Primary incubation 1hr (10ug/ml) followed by Alexa Fluor 488 secondary antibody (2ug/ml), showing cytoplasmic staining. The nuclear stain is DAPI (blue). Negative control: Unimmunized goat IgG (10ug/ml) followed by Alexa Fluor 488 secondary antibody (2ug/ml).



EB06041 (8µg/ml) staining of paraffin embedded Human Cortex. Heat induced antigen retrieval with citrate buffer pH 6, HRP-staining.



EB06041 Negative Control showing staining of paraffin embedded Human Cortex, with no primary antibody.