



## UK Office

### Everest Biotech Ltd

Cherwell Innovation Centre  
77 Heyford Park  
Upper Heyford  
Oxfordshire  
OX25 5HD  
UK

Enquiries:

[info@everestbiotech.com](mailto:info@everestbiotech.com)

Sales:

[sales@everestbiotech.com](mailto:sales@everestbiotech.com)

Tech support:

[support@everestbiotech.com](mailto:support@everestbiotech.com)

Tel: +44 (0)1869 238326

[www.everestbiotech.com](http://www.everestbiotech.com)

**Research Use Only. Not for  
diagnostic or therapeutic use.**

## EB12386 - Goat Anti-FBXO11 (aa754-765) Antibody

Size: 100µg specific antibody in 200µl



### Target Protein

**Principal Names:** FBXO11, F-box protein 11, FBX11, PRMT9, UBR6, VIT1, F-box only protein 11, protein arginine N-methyltransferase 9, ubiquitin protein ligase E3 component n-recognin 6, vitiligo-associated protein 1, vitiligo-associated protein VIT-1

**Official Symbol:** FBXO11

**Accession Number(s):** NP\_079409.3; NP\_001177203.1; XP\_005264629.1;  
XP\_005264630.1; XP\_005264631.1; XP\_005264632.1

**Human GeneID(s):** [80204](#)

**Non-Human GeneID(s):** 225055 (mouse), 301674 (rat)

**Important Comments:** This antibody is expected to recognize all reported isoforms (NP\_079409.3; NP\_001177203.1; XP\_005264629.1; XP\_005264630.1; XP\_005264631.1; XP\_005264632.1).

### Immunogen

Peptide with sequence C-KISSYTSYPMHD, from the internal region of the protein sequence according to NP\_079409.3; NP\_001177203.1; XP\_005264629.1; XP\_005264630.1; XP\_005264631.1; XP\_005264632.1.

Please note the [peptide](#) is available for sale.

### Purification and Storage

Purified from goat serum by ammonium sulphate precipitation followed by antigen affinity chromatography using the immunizing peptide.

Supplied at 0.5 mg/ml in Tris saline, 0.02% sodium azide, pH7.3 with 0.5% bovine serum albumin.

Aliquot and store at -20°C. Minimize freezing and thawing.

### Applications Tested

**Peptide ELISA:** antibody detection limit dilution 1:16000.

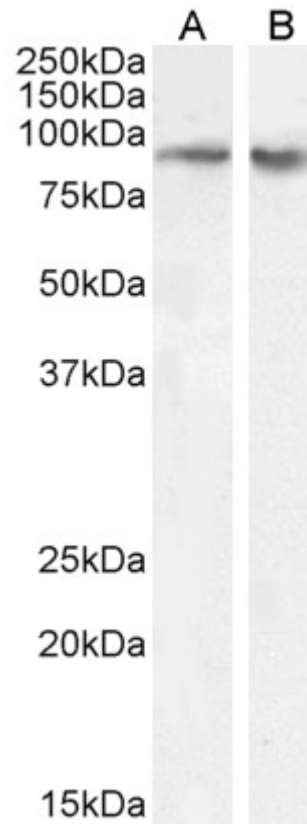
**Western blot:** Approx 90kDa band observed in nuclear lysates of cell line HeLa and lysates of cell line A431 (calculated MW of 94.1kDa according to NP\_079409.3).

Recommended concentration: 0.1-0.3µg/ml. Primary incubation 1 hour at room temperature.

### Species Reactivity

**Tested:** Human

**Expected from sequence similarity:** Human, Mouse, Rat, Pig, Cow



EB12386 (0.1  $\mu\text{g/ml}$ ) staining of nuclear HeLa (A) and A431 (B) cell lysate (35  $\mu\text{g}$  protein in RIPA buffer).  
Detected by chemiluminescence.