



## UK Office

### Everest Biotech Ltd

Cherwell Innovation Centre  
77 Heyford Park  
Upper Heyford  
Oxfordshire  
OX25 5HD  
UK

Enquiries:

[info@everestbiotech.com](mailto:info@everestbiotech.com)

Sales:

[sales@everestbiotech.com](mailto:sales@everestbiotech.com)

Tech support:

[support@everestbiotech.com](mailto:support@everestbiotech.com)

Tel: +44 (0)1869 238326

Fax: +44 (0)1869 238327

## US Office

### Everest Biotech c/o Abcore

405 Maple Street, Suite A106  
Ramona,  
CA 92065  
USA

Inquiries:

[info@everestbiotech.com](mailto:info@everestbiotech.com)

Sales:

[usasales@everestbiotech.com](mailto:usasales@everestbiotech.com)

Tech support:

[support@everestbiotech.com](mailto:support@everestbiotech.com)

Tel: 888-320-4628 (toll-free)

Fax: 888-841-9041

[www.everestbiotech.com](http://www.everestbiotech.com)

**Research Use Only. Not for  
diagnostic or therapeutic use.**

## EB12445 - Goat Anti-FCRL1 Antibody

Size: 100µg specific antibody in 200µl



### Target Protein

**Principal Names:** FCRL1, Fc receptor-like 1, CD307a, FCRH1, IFGP1, IRTA5, Fc receptor-like protein 1, IFGP family protein 1, fc receptor homolog 1, fcR-like protein 1, hIFGP1, immune receptor translocation-associated protein 5, immunoglobulin superfamily Fc receptor, gp42

**Official Symbol:** FCRL1

**Accession Number(s):** NP\_443170.1; NP\_001152870.1

**Human GeneID(s):** [115350](#)

**Important Comments:** This antibody is expected to recognize isoform 1 (NP\_443170.1) and isoform 3 (NP\_001152870.1).

### Immunogen

Peptide with sequence C-SRLRKANITDVD, from the C Terminus of the protein sequence according to NP\_443170.1; NP\_001152870.1.

Please note the [peptide](#) is available for sale.

### Purification and Storage

Purified from goat serum by ammonium sulphate precipitation followed by antigen affinity chromatography using the immunizing peptide.

Supplied at 0.5 mg/ml in Tris saline, 0.02% sodium azide, pH7.3 with 0.5% bovine serum albumin.

Aliquot and store at -20°C. Minimize freezing and thawing.

### Applications Tested

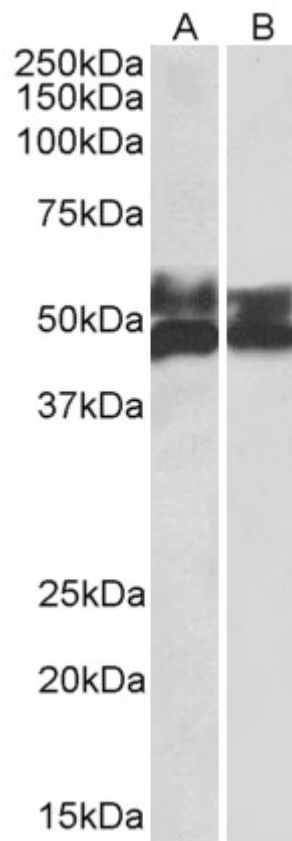
**Peptide ELISA:** antibody detection limit dilution 1:64000.

**Western blot:** Approx 55+48kDa bands observed in Human Tonsil and Thymus lysates (calculated MW of 46.9kDa according to NP\_443170.1). The observed molecular weights correspond to the glycosylated forms. Recommended concentration: 0.3-1µg/ml.

### Species Reactivity

**Tested:** Human

**Expected from sequence similarity:** Human



EB12445 (0.5µg/ml) staining of Human Tonsil (A) and Thymus (B) lysates (35µg protein in RIPA buffer). Primary incubation was 1 hour. Detected by chemiluminescence.