

UK Office

Everest Biotech Ltd

Cherwell Innovation Centre
77 Heyford Park
Upper Heyford
Oxfordshire
OX25 5HD
UK

Enquiries:

info@everestbiotech.com

Sales:

sales@everestbiotech.com

Tech support:

support@everestbiotech.com

Tel: +44 (0)1869 238326

www.everestbiotech.com

**Research Use Only. Not for
diagnostic or therapeutic use.**

EB12448 - Goat Anti-FCRL2 (aa92-104) Antibody

Size: 100µg specific antibody in 200µl



Target Protein

Principal Names: FCRL2, Fc receptor-like 2, CD307b, FCRH2, IFGP4, IRTA4, SPAP1, SPAP1A, SPAP1B, SPAP1C, Fc receptor-like protein 2, IFGP family protein 4, SH2 domain containing phosphatase anchor protein 1, SH2 domain-containing phosphatase anchor protein 1, fc receptor h

Official Symbol: FCRL2

Accession Number(s): NP_110391.2

Human GeneID(s): [79368](#)

Immunogen

Peptide with sequence C-DKTSNIVKIKVQE, from the internal region of the protein sequence according to NP_110391.2.

Please note the [peptide](#) is available for sale.

Purification and Storage

Purified from goat serum by ammonium sulphate precipitation followed by antigen affinity chromatography using the immunizing peptide.

Supplied at 0.5 mg/ml in Tris saline, 0.02% sodium azide, pH7.3 with 0.5% bovine serum albumin.

Aliquot and store at -20°C. Minimize freezing and thawing.

Applications Tested

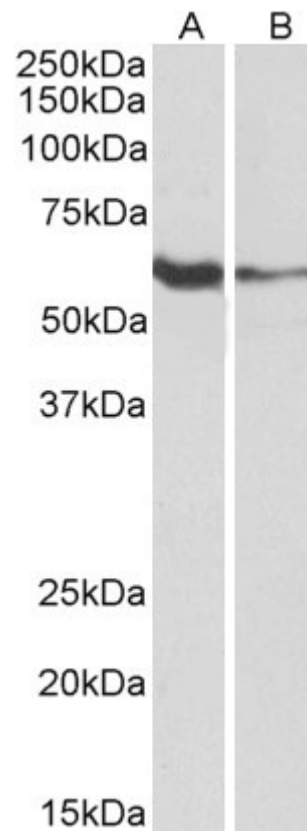
Peptide ELISA: antibody detection limit dilution 1:16000.

Western blot: Approx 60kDa band observed in lysates of Human Tonsil and of cell line Daudi (calculated MW of 55.5kDa according to NP_110391.2). Recommended concentration: 1-3µg/ml.

Species Reactivity

Tested: Human

Expected from sequence similarity: Human



EB12448 (1 μ g/ml) staining of Human Tonsil (A) and Daudi (B) lysates (35 μ g protein in RIPA buffer). Primary incubation was 1 hour. Detected by chemiluminescence.