



UK Office

Everest Biotech Ltd

Cherwell Innovation Centre
77 Heyford Park
Upper Heyford
Oxfordshire
OX25 5HD
UK

Enquiries:

info@everestbiotech.com

Sales:

sales@everestbiotech.com

Tech support:

support@everestbiotech.com

Tel: +44 (0)1869 238326

Fax: +44 (0)1869 238327

US Office

Everest Biotech c/o Abcore

405 Maple Street, Suite A106
Ramona,
CA 92065
USA

Inquiries:

info@everestbiotech.com

Sales:

usasales@everestbiotech.com

Tech support:

support@everestbiotech.com

Tel: 888-320-4628 (toll-free)

Fax: 888-841-9041

www.everestbiotech.com

**Research Use Only. Not for
diagnostic or therapeutic use.**

EB05044 - Goat Anti-FEM1C Antibody

Size: 100µg specific antibody in 200µl



Target Protein

Principal Names: FEM1C, FEM1A, KIAA1785, fem-1 homolog c (C.elegans), feminization 1 homolog a

Official Symbol: FEM1C

Accession Number(s): NP_064562.1

Human GeneID(s): [56929](#)

Non-Human GeneID(s): 240263 (mouse)

Immunogen

Peptide with sequence C-HIPEKLETFFVSLHR, from the C Terminus of the protein sequence according to NP_064562.1.

Please note the [peptide](#) is available for sale.

Purification and Storage

Purified from goat serum by ammonium sulphate precipitation followed by antigen affinity chromatography using the immunizing peptide.

Supplied at 0.5 mg/ml in Tris saline, 0.02% sodium azide, pH7.3 with 0.5% bovine serum albumin.

Aliquot and store at -20°C. Minimize freezing and thawing.

Applications Tested

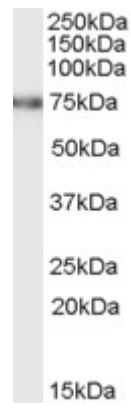
Peptide ELISA: antibody detection limit dilution 1:8000.

Western blot: Approx 75kDa band observed in heart and kidney lysates from mouse and rat (calculated MW of 68.6kDa according to mouse NP_775599.1). Recommended concentration: 0.3-1µg/ml.

Species Reactivity

Tested: Mouse, Rat

Expected from sequence similarity: Human, Mouse, Rat, Dog, Cow



EB05044 (0.5µg/ml) staining of rat kidney lysate (RIPA buffer, 35µg total protein per lane). Primary incubated for 1 hour. Detected by western blot using chemiluminescence.