

UK Office

Everest Biotech Ltd

Cherwell Innovation Centre
77 Heyford Park
Upper Heyford
Oxfordshire
OX25 5HD
UK

Enquiries:

info@everestbiotech.com

Sales:

sales@everestbiotech.com

Tech support:

support@everestbiotech.com

Tel: +44 (0)1869 238326

www.everestbiotech.com

**Research Use Only. Not for
diagnostic or therapeutic use.**

EB07508 - Goat Anti-FEZ1 / Zygin 1 Antibody

Size: 100µg specific antibody in 200µl



Target Protein

Principal Names: FEZ1, zygin 1, fasciculation and elongation protein zeta 1 (zygin I)

Official Symbol: FEZ1

Accession Number(s): NP_005094.1

Human GeneID(s): [9638](#)

Non-Human GeneID(s): 235180 (mouse), 81730 (rat)

Important Comments: This antibody is expected to recognize isoform 1 (NP_005094.1) only.

Immunogen

Peptide with sequence C-QNKQKEQRELMKK, from the internal region of the protein sequence according to NP_005094.1.

Please note the [peptide](#) is available for sale.

Purification and Storage

Purified from goat serum by ammonium sulphate precipitation followed by antigen affinity chromatography using the immunizing peptide.

Supplied at 0.5 mg/ml in Tris saline, 0.02% sodium azide, pH7.3 with 0.5% bovine serum albumin.

Aliquot and store at -20°C. Minimize freezing and thawing.

Applications Tested

Peptide ELISA: antibody detection limit dilution 1:64000.

Western blot: Approx 75kDa band observed in lysates of cell line Kelly, ans in Rat Brain lysates (calculated MW of 45.1kDa according to human NP_005094.1 and 45.2kDa according to Rat NP_112328.1). This molecular weight is routinely observed by other sources and was successfully blocked by incubation with the immunising peptide.

Recommended concentration:0.1-0.3g/ml. Primary incubation 1 hour at room temperature.

IHC: Paraffin embedded Human Brain (Cerebellum). Recommended concentration: 5-8µg/ml.

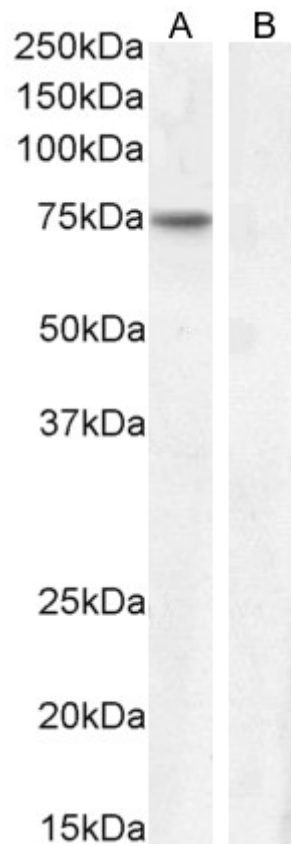
Species Reactivity

Tested: Human, Rat

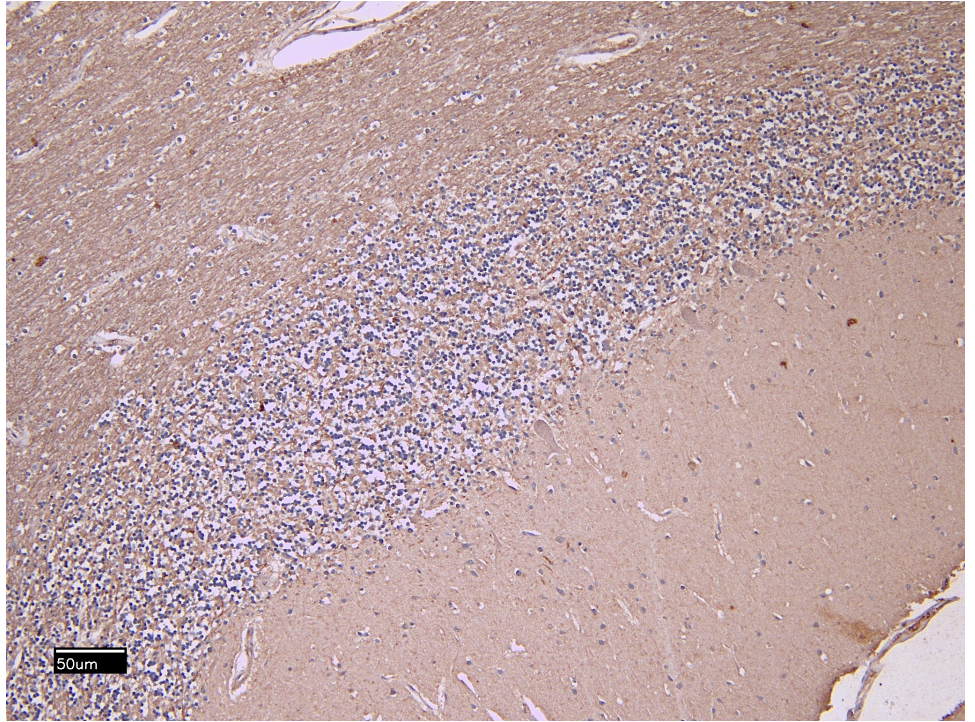
Expected from sequence similarity: Human, Mouse, Rat, Dog



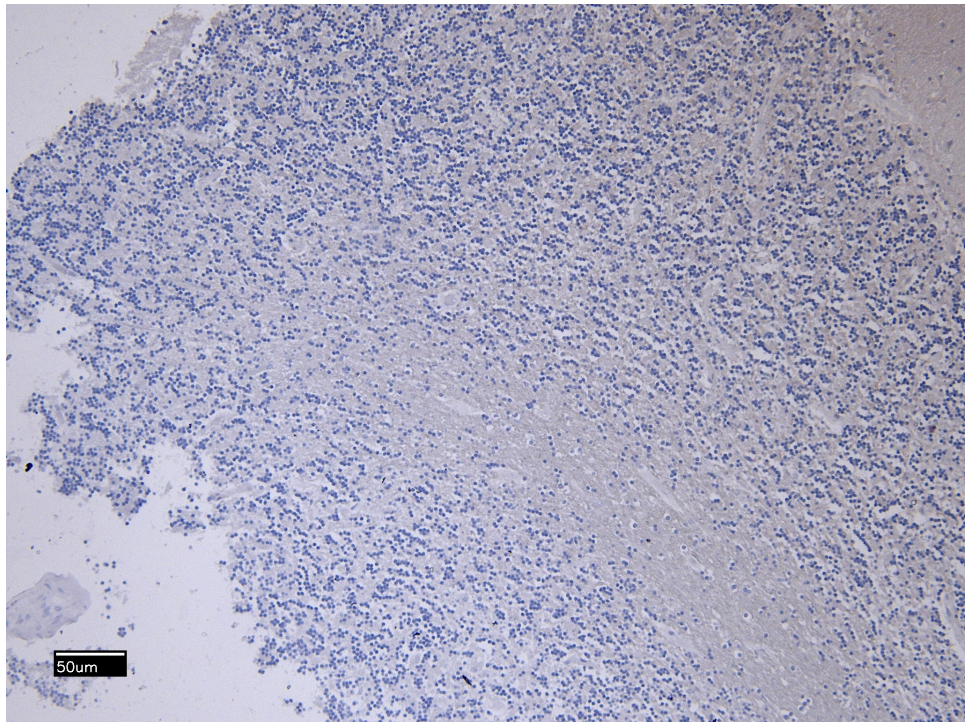
EB07508 (0.1µg/ml) staining of Kelly cell lysate (A) + Peptide (B) (35µg protein in RIPA buffer). Detected by chemiluminescence.



EB07508 (0.1µg/ml) staining of Rat Brain lysate (A) + Peptide (B) (35µg protein in RIPA buffer). Detected by chemiluminescence.



EB07508 (5µg/ml) staining of paraffin embedded Human Cerebellum. Heat induced antigen retrieval with citrate buffer pH 6, HRP-staining.



EB07508 Negative Control showing staining of paraffin embedded Human Cerebellum, with no primary antibody.