



## UK Office

### Everest Biotech Ltd

Cherwell Innovation Centre  
77 Heyford Park  
Upper Heyford  
Oxfordshire  
OX25 5HD  
UK

Enquiries:

[info@everestbiotech.com](mailto:info@everestbiotech.com)

Sales:

[sales@everestbiotech.com](mailto:sales@everestbiotech.com)

Tech support:

[support@everestbiotech.com](mailto:support@everestbiotech.com)

Tel: +44 (0)1869 238326

Fax: +44 (0)1869 238327

## US Office

### Everest Biotech c/o Abcore

405 Maple Street, Suite A106  
Ramona,  
CA 92065  
USA

Inquiries:

[info@everestbiotech.com](mailto:info@everestbiotech.com)

Sales:

[usasales@everestbiotech.com](mailto:usasales@everestbiotech.com)

Tech support:

[support@everestbiotech.com](mailto:support@everestbiotech.com)

Tel: 888-320-4628 (toll-free)

Fax: 888-841-9041

[www.everestbiotech.com](http://www.everestbiotech.com)

**Research Use Only. Not for  
diagnostic or therapeutic use.**

## EB11045 - Goat Anti-Fgf23 (mouse) Antibody

Size: 100µg specific antibody in 200µl



### Target Protein

**Principal Names:** ADHR, FGF-23, fibroblast growth factor 23, HPDR2, HYPF, phosphatonin, PHPTC, tumor-derived hypophosphatemia inducing factor, tumor-derived hypophosphatemia-inducing factor, Fgf23

**Official Symbol:** Fgf23

**Accession Number(s):** NP\_073148.1

**Non-Human GeneID(s):** 64654 (mouse), 170583 (rat)

### Immunogen

Peptide with sequence C-ENGVDVYLSQKHH, from the internal region of the protein sequence according to NP\_073148.1.

Please note the [peptide](#) is available for sale.

### Purification and Storage

Purified from goat serum by ammonium sulphate precipitation followed by antigen affinity chromatography using the immunizing peptide.

Supplied at 0.5 mg/ml in Tris saline, 0.02% sodium azide, pH7.3 with 0.5% bovine serum albumin.

Aliquot and store at -20°C. Minimize freezing and thawing.

### Applications Tested

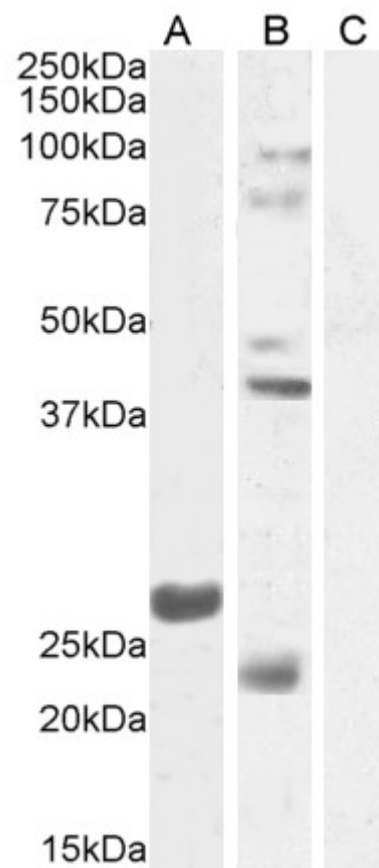
**Peptide ELISA:** antibody detection limit dilution 1:128000.

**Western blot:** Approx 27kDa band observed in Mouse Testis lysates (calculated MW of 27.7kDa according to NP\_073148.1). Some lysates showed prominent bands at approx. 24+38kDa which were successfully blocked by incubation with the immunizing peptide and have been reported in the literature (Garringer et al., 2008, PMID:18682534). Recommended concentration: 0.3-1µg/ml. Primary incubation 1 hour at room temperature.

### Species Reactivity

**Tested:** Mouse

**Expected from sequence similarity:** Mouse, Rat



EB11045 (1µg/ml) staining of Mouse Testes lysate 1 (A) and Testes lysate 2 (B) + peptide (C) (35µg protein in RIPA buffer). Detected by chemiluminescence.