

## UK Office

### Everest Biotech Ltd

Cherwell Innovation Centre  
77 Heyford Park  
Upper Heyford  
Oxfordshire  
OX25 5HD  
UK

Enquiries:

[info@everestbiotech.com](mailto:info@everestbiotech.com)

Sales:

[sales@everestbiotech.com](mailto:sales@everestbiotech.com)

Tech support:

[support@everestbiotech.com](mailto:support@everestbiotech.com)

Tel: +44 (0)1869 238326

[www.everestbiotech.com](http://www.everestbiotech.com)

**Research Use Only. Not for  
diagnostic or therapeutic use.**

## EB11208 - Goat Anti-FGFR1 Antibody

Size: 100µg specific antibody in 200µl



### Target Protein

**Principal Names:** basic fibroblast growth factor receptor 1, BFGFR, bFGF-R-1, CD331, CEK, FGFR, FGFR-1, fibroblast growth factor receptor 1, FLG, FLJ99988, FLT2, FLT-2, FMS-like tyrosine kinase 2, fms-related tyrosine kinase 2, HBGFR, heparin-binding growth factor receptor, hydroxyaryl-protein kinase, KAL2, N-SAM, OGD, OTTHUMP00000190875, OTTHUMP00000190876, OTTHUMP00000190880, proto-oncogene c-Fgr, soluble FGFR1 variant 1, soluble FGFR1 variant 2, FGFR1

**Official Symbol:** FGFR1

**Accession Number(s):** NP\_075598.2; NP\_056934.2; NP\_075593.1; NP\_075594.1; NP\_001167534.1; NP\_001167535.1; NP\_001167538.1

**Human GeneID(s):** [2260](#)

**Non-Human GeneID(s):** 14182 (mouse), 79114 (rat)

**Important Comments:** This antibody is expected to recognize reported isoforms 1, 2, 10, 11 and 14. Reported variants represent identical protein: NP\_075593.1, NP\_001167537.1. Reported variants represent identical protein: NP\_001167536.1, NP\_056934.2. The immunizing peptide represents part of the extracellular domain.

### Immunogen

Peptide with sequence RCRLRDDVQSIN, from the internal region of the protein sequence according to NP\_075598.2; NP\_056934.2; NP\_075593.1; NP\_075594.1; NP\_001167534.1; NP\_001167535.1; NP\_001167538.1.

Please note the [peptide](#) is available for sale.

### Purification and Storage

Purified from goat serum by ammonium sulphate precipitation followed by antigen affinity chromatography using the immunizing peptide.

Supplied at 0.5 mg/ml in Tris saline, 0.02% sodium azide, pH7.3 with 0.5% bovine serum albumin.

Aliquot and store at -20°C. Minimize freezing and thawing.

### Applications Tested

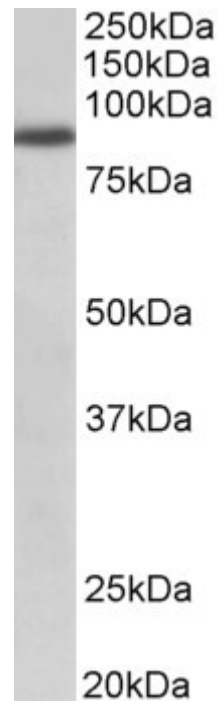
**Peptide ELISA:** antibody detection limit dilution 1:8000.

**Western blot:** Approx 85kDa band observed in lysates of cell line A549 (calculated MW of 91.9kDa according to NP\_075598.2). Recommended concentration: 1-3µg/ml.

### Species Reactivity

**Tested:** Human

**Expected from sequence similarity:** Human, Mouse, Dog, Cow



EB11208 (1 $\mu$ g/ml) staining of A549 lysate (35 $\mu$ g protein in RIPA buffer). Primary incubation was 1 hour.  
Detected by chemiluminescence.