



UK Office

Everest Biotech Ltd

Cherwell Innovation Centre
77 Heyford Park
Upper Heyford
Oxfordshire
OX25 5HD
UK

Enquiries:

info@everestbiotech.com

Sales:

sales@everestbiotech.com

Tech support:

support@everestbiotech.com

Tel: +44 (0)1869 238326

Fax: +44 (0)1869 238327

US Office

Everest Biotech c/o Abcore

405 Maple Street, Suite A106
Ramona,
CA 92065
USA

Inquiries:

info@everestbiotech.com

Sales:

usasales@everestbiotech.com

Tech support:

support@everestbiotech.com

Tel: 888-320-4628 (toll-free)

Fax: 888-841-9041

www.everestbiotech.com

**Research Use Only. Not for
diagnostic or therapeutic use.**

EB11208 - Goat Anti-FGFR1 Antibody

Size: 100µg specific antibody in 200µl



Target Protein

Principal Names: basic fibroblast growth factor receptor 1, BFGFR, bFGF-R-1, CD331, CEK, FGFR, FGFR-1, fibroblast growth factor receptor 1, FLG, FLJ99988, FLT2, FLT-2, FMS-like tyrosine kinase 2, fms-related tyrosine kinase 2, HBGFR, heparin-binding growth factor receptor, hydroxyaryl-protein kinase, KAL2, N-SAM, OGD, OTTHUMP00000190875, OTTHUMP00000190876, OTTHUMP00000190880, proto-oncogene c-Fgr, soluble FGFR1 variant 1, soluble FGFR1 variant 2, FGFR1

Official Symbol: FGFR1

Accession Number(s): NP_075598.2; NP_056934.2; NP_075593.1; NP_075594.1; NP_001167534.1; NP_001167535.1; NP_001167538.1

Human GeneID(s): [2260](#)

Non-Human GeneID(s): 14182 (mouse), 79114 (rat)

Important Comments: This antibody is expected to recognize reported isoforms 1, 2, 10, 11 and 14. Reported variants represent identical protein: NP_075593.1, NP_001167537.1. Reported variants represent identical protein: NP_001167536.1, NP_056934.2. The immunizing peptide represents part of the extracellular domain.

Immunogen

Peptide with sequence RCRLRDDVQSIN, from the internal region of the protein sequence according to NP_075598.2; NP_056934.2; NP_075593.1; NP_075594.1; NP_001167534.1; NP_001167535.1; NP_001167538.1.

Please note the [peptide](#) is available for sale.

Purification and Storage

Purified from goat serum by ammonium sulphate precipitation followed by antigen affinity chromatography using the immunizing peptide.

Supplied at 0.5 mg/ml in Tris saline, 0.02% sodium azide, pH7.3 with 0.5% bovine serum albumin.

Aliquot and store at -20°C. Minimize freezing and thawing.

Applications Tested

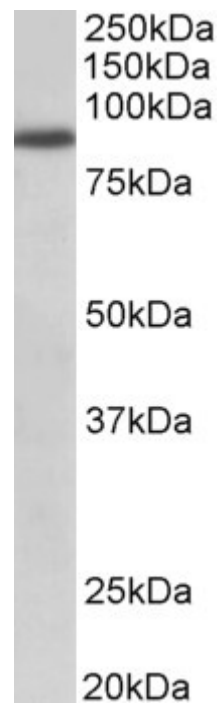
Peptide ELISA: antibody detection limit dilution 1:8000.

Western blot: Approx 85kDa band observed in lysates of cell line A549 (calculated MW of 91.9kDa according to NP_075598.2). Recommended concentration: 1-3µg/ml.

Species Reactivity

Tested: Human

Expected from sequence similarity: Human, Mouse, Dog, Cow



EB11208 (1 μ g/ml) staining of A549 lysate (35 μ g protein in RIPA buffer). Primary incubation was 1 hour.
Detected by chemiluminescence.