



Everest Biotech Ltd  
Cherwell Innovation Centre  
77 Heyford Park  
Upper Heyford  
Oxfordshire  
OX25 5HD, United Kingdom

[everestbiotech.com](http://everestbiotech.com)

[sales@everestbiotech.com](mailto:sales@everestbiotech.com)

[support@everestbiotech.com](mailto:support@everestbiotech.com)

Tel +44 1869 238326

Fax +44 1869 238327

**Research Use Only. Not for diagnostic or therapeutic use.**

Storage: For long-term storage keep aliquots at -20°C. (Store no longer than 12 months at 4°C). Minimize freezing and thawing.

## EB05218 - Goat Anti-FGR Antibody

Size: 100µg specific antibody in 200µl



### Target Protein

**Principal Names:** proto-oncogene tyrosine-protein kinase FGR, p55-c-fgr protein, c-src-2 proto-oncogene, c-fgr protooncogene, OTTHUMP00000003603, p58c-fgr, p55c-fgr, c-src2, c-fgr, MGC75096, FLJ43153, Gardner-Rasheed feline sarcoma viral (v-fgr) oncogene, Oncogene FGR, SRC2, Gardner-Rasheed feline sarcoma viral (v-fgr) oncogene homolog, FGR

**Official Symbol:** FGR

**Accession Number(s):** NP\_001036194.1; NP\_001036212.1; NP\_005239.1

**Human GeneID(s):** [2268](#)

**Important Comments:** This antibody is expected to recognise all three reported isoforms (NP\_001036194.1; NP\_001036212.1; NP\_005239.1).

### Immunogen

Peptide with sequence C-TSAEPQYQPGDQT, from the C Terminus of the protein sequence according to NP\_001036194.1; NP\_001036212.1; NP\_005239.1.

Please note the [peptide](#) is available for sale.

### Purification and Storage

Purified from goat serum by ammonium sulphate precipitation followed by antigen affinity chromatography using the immunizing peptide.

Supplied at 0.5 mg/ml in Tris saline, 0.02% sodium azide, pH7.3 with 0.5% bovine serum albumin.

Aliquot and store at -20°C. Minimize freezing and thawing.

### Applications Tested

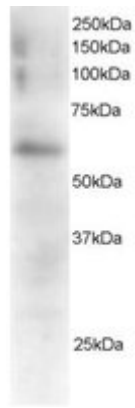
**Peptide ELISA:** antibody detection limit dilution 1:1000.

**Western blot:** Approx 60kDa band seen in Mouse Spleen extracts. Recommended for use at 0.5-2µg/ml.

### Species Reactivity

**Tested:** Mouse

**Expected from sequence similarity:** Human, Mouse, Rat, Dog



EB05218 staining (0.5 $\mu$ g/ml) of Mouse Spleen extracts (RIPA buffer, 35 $\mu$ g total protein per lane). Primary incubated for 1 hour. Detected by western blot using chemiluminescence.