



UK Office

Everest Biotech Ltd

Cherwell Innovation Centre
77 Heyford Park
Upper Heyford
Oxfordshire
OX25 5HD
UK

Enquiries:

info@everestbiotech.com

Sales:

sales@everestbiotech.com

Tech support:

support@everestbiotech.com

Tel: +44 (0)1869 238326

Fax: +44 (0)1869 238327

US Office

Everest Biotech c/o Abcore

405 Maple Street, Suite A106
Ramona,
CA 92065
USA

Inquiries:

info@everestbiotech.com

Sales:

usasales@everestbiotech.com

Tech support:

support@everestbiotech.com

Tel: 888-320-4628 (toll-free)

Fax: 888-841-9041

www.everestbiotech.com

**Research Use Only. Not for
diagnostic or therapeutic use.**

EB06507-B - Goat Anti-FHL1 / SLIM1, Biotinylated Antibody

Size: 100µg specific antibody in 200µl



Target Protein

Principal Names: FHL1, four and a half LIM domains 1, FHL-1, FHL1A, FHL1B, FLH1A, KYOT, SLIM, SLIM-1, SLIM1, SLIMMER, XMPMA, LIM protein SLIMMER, four-and-a-half Lin11, skeletal muscle LIM-protein 1, Isl-1 and Mec-3 domains 1, Four-and-a-half LIM domains 1, KYO-T, MGC111107, RP11-535K18.1

Official Symbol: FHL1

Accession Number(s): NP_001440.2; NP_001153171.1

Human GeneID(s): [2273](#)

Non-Human GeneID(s): 14199 (mouse), 25177 (rat)

Important Comments: This antibody is expected to recognise isoforms 2 (NP_001440.1) and 5 (NP_001153171.1). Since June 2009 the second N residue in the immunizing peptide is no longer representative as it has been substituted by Q at position 284 of NP_001440.2. Variants NP_001440.2, NP_001153176.1 and NP_001153172.1 represent identical protein.

Immunogen

Peptide with sequence CNKRFVFNHEQVY., from the internal region of the protein sequence according to NP_001440.2; NP_001153171.1.

Please note the [peptide](#) is available for sale.

Purification and Storage

Purified from goat serum by ammonium sulphate precipitation followed by antigen affinity chromatography using the immunizing peptide.

Supplied at 0.5 mg/ml in Tris saline, 0.02% sodium azide, pH7.3 with 0.5% bovine serum albumin.

Aliquot and store at -20°C. Minimize freezing and thawing.

Applications Tested

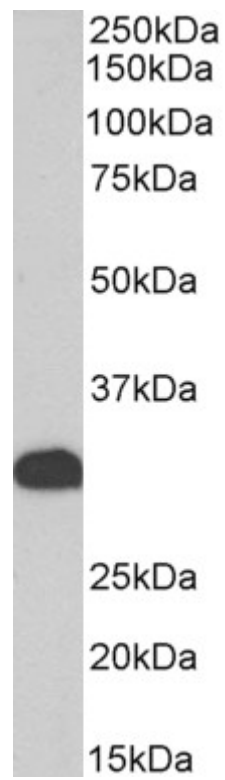
Peptide ELISA: antibody detection limit dilution 1:16000.

Western blot: Approx 30kDa band observed in Human Heart lysates (calculated MW of 31.9kDa according to NP_001440.2). See non-biotinylated parental product's datasheet for further QC data. Recommended concentration: 0.3-1µg/ml.

Species Reactivity

Tested: Human, Mouse

Expected from sequence similarity: Human, Mouse, Rat, Dog, Pig, Cow



Biotinylated EB06507 (0.3 μ g/ml) staining of Human Heart lysate (35 μ g protein in RIPA buffer), exactly mirroring its parental non-biotinylated product. Primary incubation was 1 hour. Detected by chemiluminescence, using streptavidin-HRP and using NAP blocker as a substitute for skimmed milk.