



UK Office

Everest Biotech Ltd

Cherwell Innovation Centre
77 Heyford Park
Upper Heyford
Oxfordshire
OX25 5HD
UK

Enquiries:

info@everestbiotech.com

Sales:

sales@everestbiotech.com

Tech support:

support@everestbiotech.com

Tel: +44 (0)1869 238326

Fax: +44 (0)1869 238327

US Office

Everest Biotech c/o Abcore

405 Maple Street, Suite A106
Ramona,
CA 92065
USA

Inquiries:

info@everestbiotech.com

Sales:

usasales@everestbiotech.com

Tech support:

support@everestbiotech.com

Tel: 888-320-4628 (toll-free)

Fax: 888-841-9041

www.everestbiotech.com

**Research Use Only. Not for
diagnostic or therapeutic use.**

EB12377 - Goat Anti-fibrinogen alpha chain (aa123-135) Antibody

Size: 100µg specific antibody in 200µl



Target Protein

Principal Names: FGA, fibrinogen alpha chain, Fib2, fibrinogen, A alpha polypeptide

Official Symbol: FGA

Accession Number(s): NP_000499.1; NP_068657.1

Human GeneID(s): [2243](#)

Important Comments: This antibody is expected to recognize both reported isoforms (NP_000499.1; NP_068657.1).

Immunogen

Peptide with sequence C-RDNTYNRVSEDLR, from the internal region of the protein sequence according to NP_000499.1; NP_068657.1.

Please note the [peptide](#) is available for sale.

Purification and Storage

Purified from goat serum by ammonium sulphate precipitation followed by antigen affinity chromatography using the immunizing peptide.

Supplied at 0.5 mg/ml in Tris saline, 0.02% sodium azide, pH7.3 with 0.5% bovine serum albumin.

Aliquot and store at -20°C. Minimize freezing and thawing.

Applications Tested

Peptide ELISA: antibody detection limit dilution 1:64000.

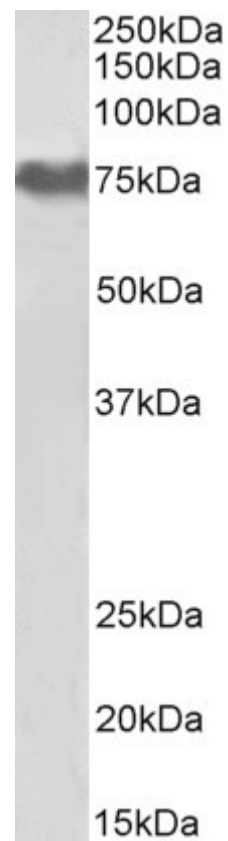
Western blot: Approx 75kDa band observed in Human Platelets lysates (calculated MW of 69.8kDa according to NP_068657.1). Recommended concentration: 0.01-0.03µg/ml.

IHC: Paraffin embedded Human Liver. Recommended concentration: 5µg/ml.

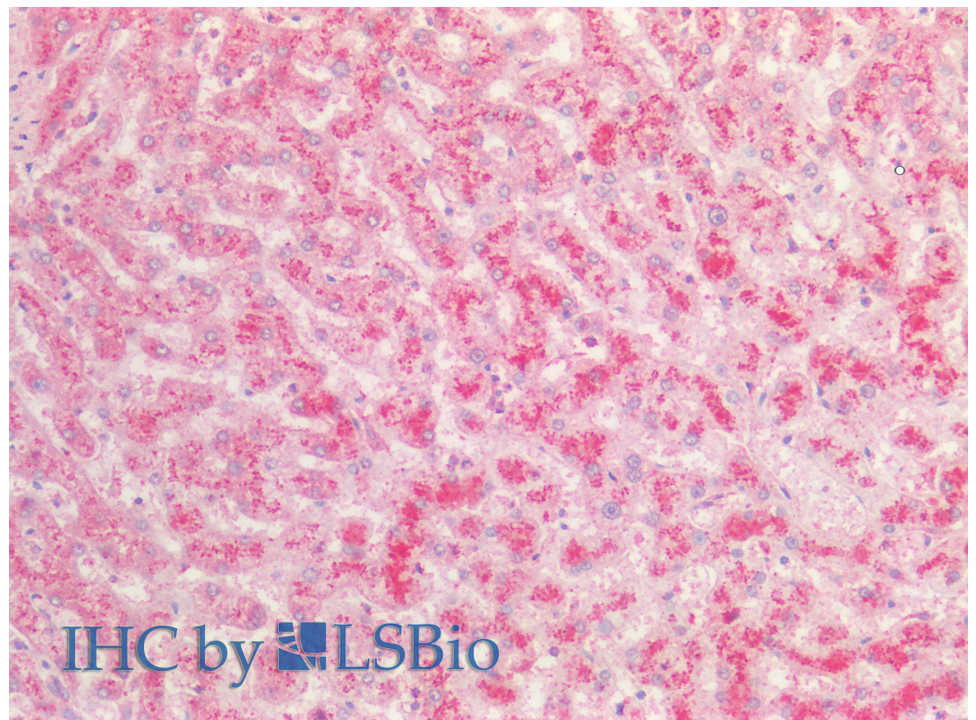
Species Reactivity

Tested: Human

Expected from sequence similarity: Human



EB12377 (0.01 μ g/ml) staining of Human Platelets lysate (35 μ g protein in RIPA buffer). Primary incubation was 1 hour. Detected by chemiluminescence.



EB12377 (5 μ g/ml) staining of paraffin embedded Human Liver. Steamed antigen retrieval with citrate buffer pH 6, AP-staining.