

## UK Office

### Everest Biotech Ltd

Cherwell Innovation Centre  
77 Heyford Park  
Upper Heyford  
Oxfordshire  
OX25 5HD  
UK

Enquiries:

[info@everestbiotech.com](mailto:info@everestbiotech.com)

Sales:

[sales@everestbiotech.com](mailto:sales@everestbiotech.com)

Tech support:

[support@everestbiotech.com](mailto:support@everestbiotech.com)

Tel: +44 (0)1869 238326

[www.everestbiotech.com](http://www.everestbiotech.com)

**Research Use Only. Not for  
diagnostic or therapeutic use.**

## EB12378 - Goat Anti-fibrinogen beta chain (aa177-190) Antibody

Size: 100µg specific antibody in 200µl



### Target Protein

**Principal Names:** FGB, fibrinogen beta chain, fibrinogen, B beta polypeptide

**Official Symbol:** FGB

**Accession Number(s):** NP\_005132.2; NP\_001171670.1

**Human GeneID(s):** [2244](#)

**Important Comments:** This antibody is expected to recognize both reported isoforms (NP\_005132.2; NP\_001171670.1).

### Immunogen

Peptide with sequence C-EKHQLYIDETVNSN, from the internal region of the protein sequence according to NP\_005132.2; NP\_001171670.1.

Please note the [peptide](#) is available for sale.

### Purification and Storage

Purified from goat serum by ammonium sulphate precipitation followed by antigen affinity chromatography using the immunizing peptide.

Supplied at 0.5 mg/ml in Tris saline, 0.02% sodium azide, pH7.3 with 0.5% bovine serum albumin.

Aliquot and store at -20°C. Minimize freezing and thawing.

### Applications Tested

**Peptide ELISA:** antibody detection limit dilution 1:128000.

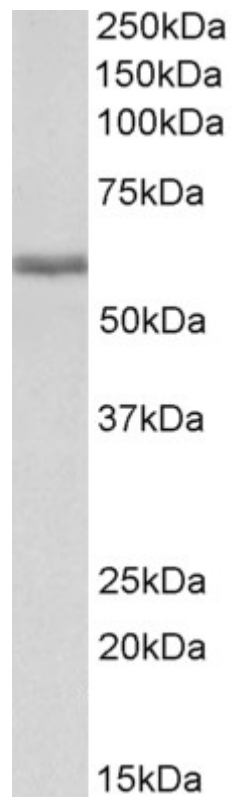
**Western blot:** Approx 60kDa band observed in Human Liver lysates (calculated MW of 55.9kDa according to NP\_005132.2). Recommended concentration: 0.01-0.03µg/ml. Primary incubation 1 hour at room temperature. Preliminary testing was unsuccessful on Pig Liver for this particular batch.

**IHC:** Paraffin embedded Human Placenta and Kidney. Recommended concentration: 5µg/ml.

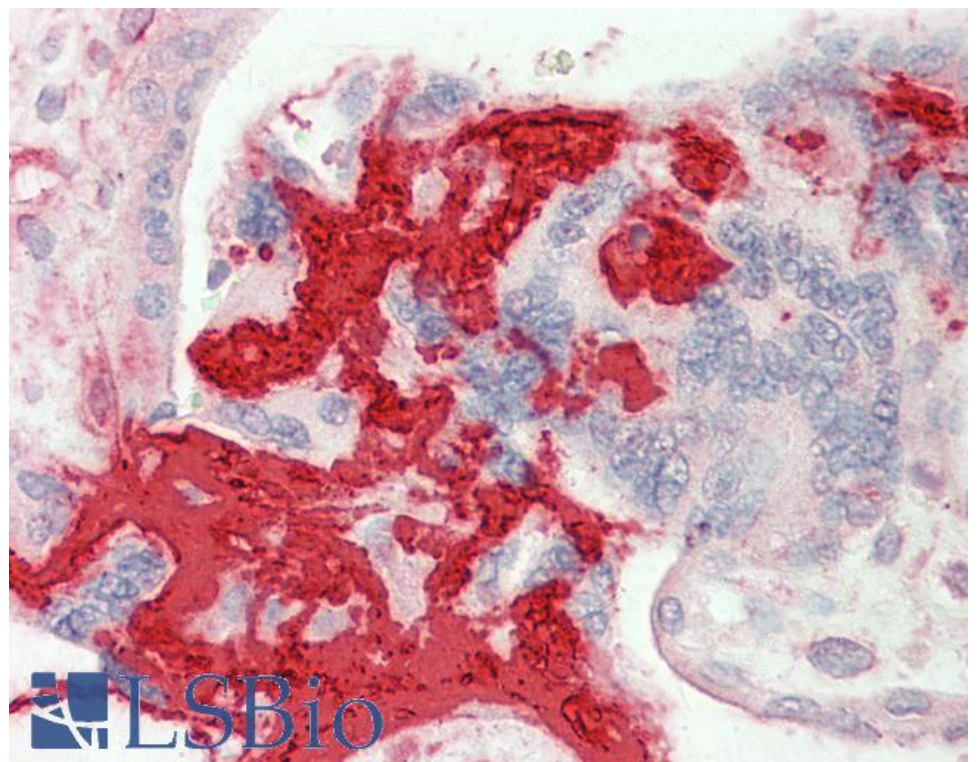
### Species Reactivity

**Tested:** Human

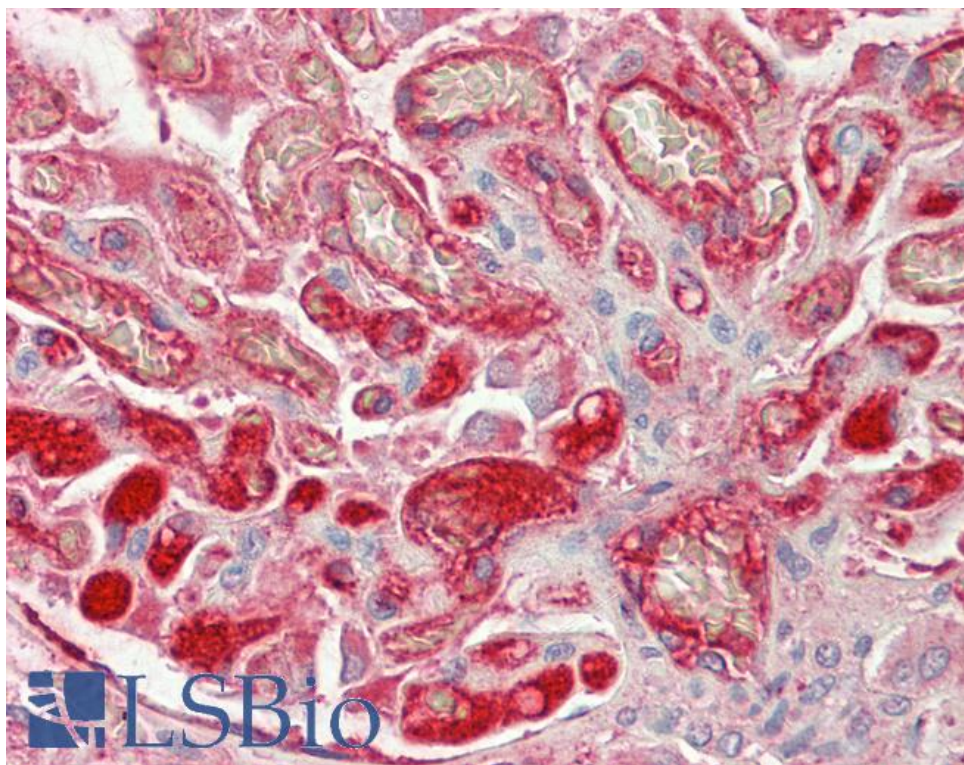
**Expected from sequence similarity:** Human, Pig



EB12378 (0.01 µg/ml) staining of Human Liver lysate (35 µg protein in RIPA buffer). Detected by chemiluminescence.



EB12378 (5 µg/ml) staining of paraffin embedded Human Placenta. Steamed antigen retrieval with citrate buffer Ph 6, AP-staining.



EB12378 (5µg/ml) staining of paraffin embedded Human Kidney. Steamed antigen retrieval with citrate buffer pH 6, AP-staining.