



UK Office

Everest Biotech Ltd

Cherwell Innovation Centre
77 Heyford Park
Upper Heyford
Oxfordshire
OX25 5HD
UK

Enquiries:

info@everestbiotech.com

Sales:

sales@everestbiotech.com

Tech support:

support@everestbiotech.com

Tel: +44 (0)1869 238326

Fax: +44 (0)1869 238327

US Office

Everest Biotech c/o Abcore

405 Maple Street, Suite A106
Ramona,
CA 92065
USA

Inquiries:

info@everestbiotech.com

Sales:

usasales@everestbiotech.com

Tech support:

support@everestbiotech.com

Tel: 888-320-4628 (toll-free)

Fax: 888-841-9041

www.everestbiotech.com

**Research Use Only. Not for
diagnostic or therapeutic use.**

EB09090 - Goat Anti-FKBP4 / FKBP52 Antibody

Size: 100µg specific antibody in 200µl



Target Protein

Principal Names: FKBP4, FKBP52, FK506 binding protein 4, 59kDa, FKBP59, HBI, Hsp56, PPlase, p52, FK506 binding protein 4 (59kD), FK506-binding protein 4, FK506-binding protein 4 (59kD), HSP binding immunophilin, T-cell FK506-binding protein, 59kD, p59 protein, peptidylprolyl cis-trans isomerase, rotamase

Official Symbol: FKBP4

Accession Number(s): NP_002005.1

Human GeneID(s): [2288](#)

Immunogen

Peptide with sequence C-DHPTDTEMKEEQKSN, from the C Terminus of the protein sequence according to NP_002005.1.

Please note the [peptide](#) is available for sale.

Purification and Storage

Purified from goat serum by ammonium sulphate precipitation followed by antigen affinity chromatography using the immunizing peptide.

Supplied at 0.5 mg/ml in Tris saline, 0.02% sodium azide, pH7.3 with 0.5% bovine serum albumin.

Aliquot and store at -20°C. Minimize freezing and thawing.

Applications Tested

Peptide ELISA: antibody detection limit dilution 1:8000.

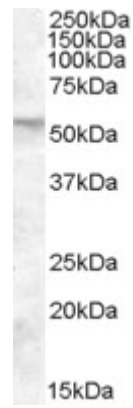
Western blot: Approx 52kDa band observed in Human Placenta lysates (calculated MW of 51.8kDa according to NP_002005.1). Recommended concentration: 0.01-0.03µg/ml. Primary incubation was 1 hour.

IHC: Paraffin embedded Human Kidney and Brain (Cerebellum). Recommended concentration: 3.75µg/ml.

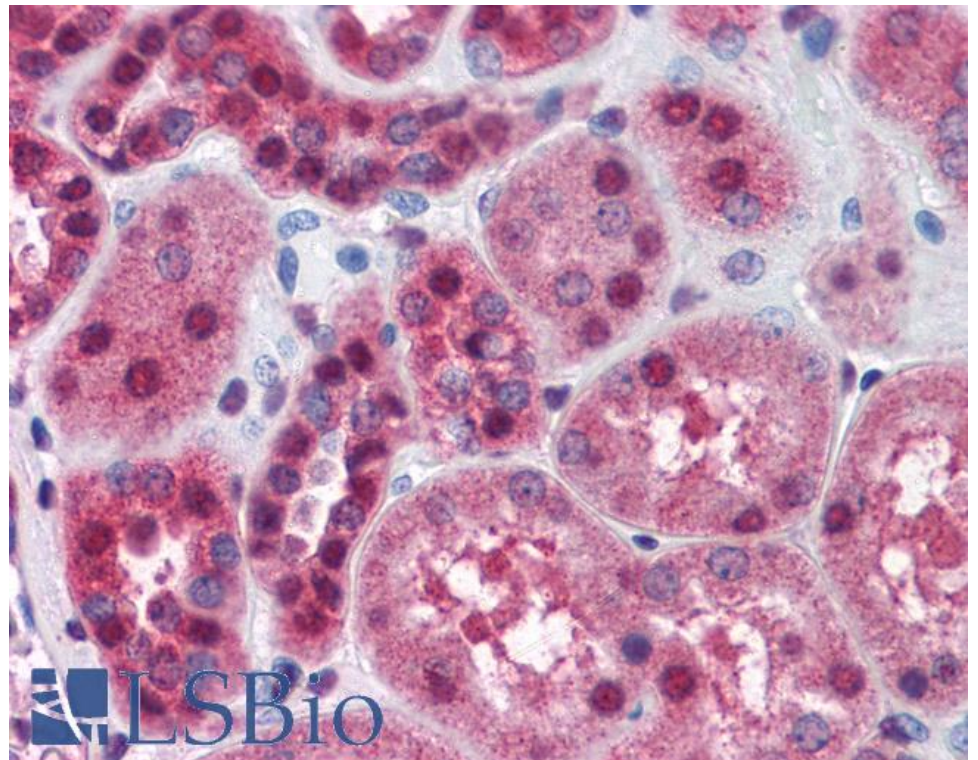
Species Reactivity

Tested: Human

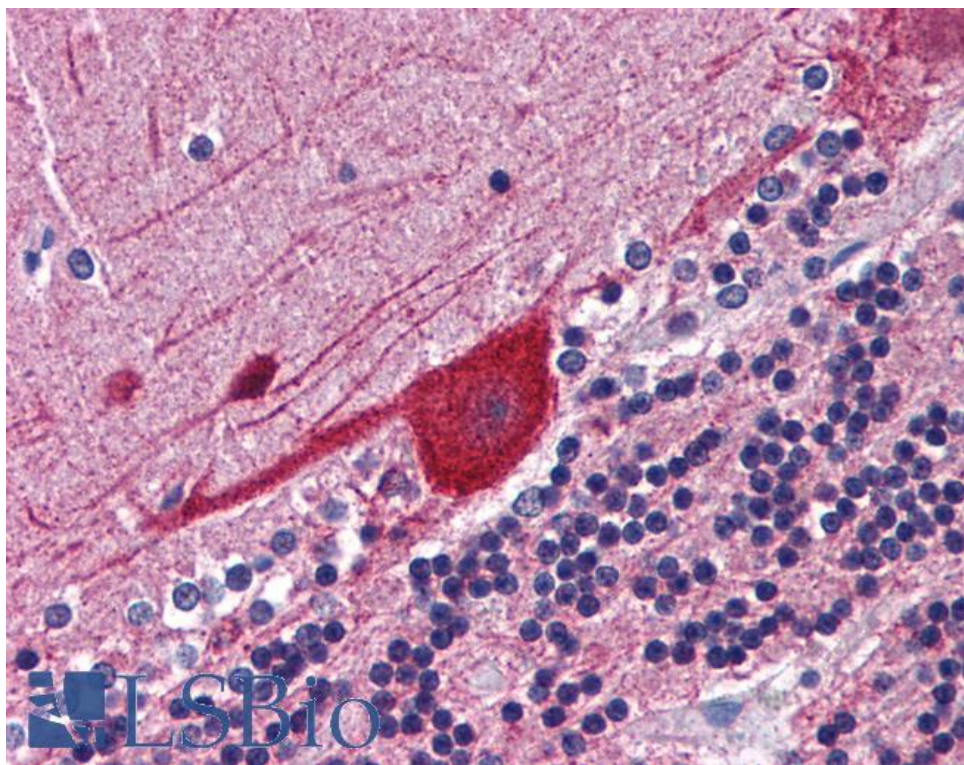
Expected from sequence similarity: Human



EB09090 (0.01 μ g/ml) staining of Human Placenta lysate (35 μ g protein in RIPA buffer). Detected by chemiluminescence.



EB09090 (3.75 μ g/ml) staining of paraffin embedded Human Kidney. Steamed antigen retrieval with citrate buffer pH 6, AP-staining.



EB09090 (3.75µg/ml) staining of paraffin embedded Human Cerebellum. Steamed antigen retrieval with citrate buffer pH 6, AP-staining.