



## UK Office

### Everest Biotech Ltd

Cherwell Innovation Centre  
77 Heyford Park  
Upper Heyford  
Oxfordshire  
OX25 5HD  
UK

Enquiries:

[info@everestbiotech.com](mailto:info@everestbiotech.com)

Sales:

[sales@everestbiotech.com](mailto:sales@everestbiotech.com)

Tech support:

[support@everestbiotech.com](mailto:support@everestbiotech.com)

Tel: +44 (0)1869 238326

Fax: +44 (0)1869 238327

## US Office

### Everest Biotech c/o Abcore

405 Maple Street, Suite A106  
Ramona,  
CA 92065  
USA

Inquiries:

[info@everestbiotech.com](mailto:info@everestbiotech.com)

Sales:

[usasales@everestbiotech.com](mailto:usasales@everestbiotech.com)

Tech support:

[support@everestbiotech.com](mailto:support@everestbiotech.com)

Tel: 888-320-4628 (toll-free)

Fax: 888-841-9041

[www.everestbiotech.com](http://www.everestbiotech.com)

**Research Use Only. Not for  
diagnostic or therapeutic use.**

## EB05449 - Goat Anti-Flotillin 1 Antibody

Size: 100µg specific antibody in 200µl



### Target Protein

**Principal Names:** FLOT1, flotillin 1, reggie-2, integral membrane component of caveolae, DADB-118P11.2

**Official Symbol:** FLOT1

**Accession Number(s):** NP\_005794.1; NP\_001305804.1

**Human GeneID(s):** [10211](#)

**Non-Human GeneID(s):** 14251 (mouse)

**Important Comments:** This antibody is expected to recognize both reported isoforms (NP\_005794.1; NP\_001305804.1).

### Immunogen

Peptide with sequence C-SISQVNHKPLRTA, from the C Terminus of the protein sequence according to NP\_005794.1; NP\_001305804.1.

Please note the [peptide](#) is available for sale.

### Purification and Storage

Purified from goat serum by ammonium sulphate precipitation followed by antigen affinity chromatography using the immunizing peptide.

Supplied at 0.5 mg/ml in Tris saline, 0.02% sodium azide, pH7.3 with 0.5% bovine serum albumin.

Aliquot and store at -20°C. Minimize freezing and thawing.

### Applications Tested

**Peptide ELISA:** antibody detection limit dilution 1:32000.

**Western blot:** Approx 48kDa band observed in lysates of cell line K562 and in preliminary testing of cell lysate MCF7 (calculated MW of 47.4kDa according to NP\_005794.1).

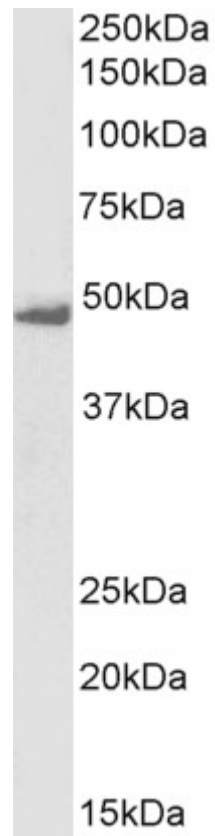
Recommended concentration: 0.1-0.3µg/ml. Primary incubation 1 hour at room temperature.

**IHC:** Paraffin embedded Human Kidney. Recommended concentration: 5µg/ml.

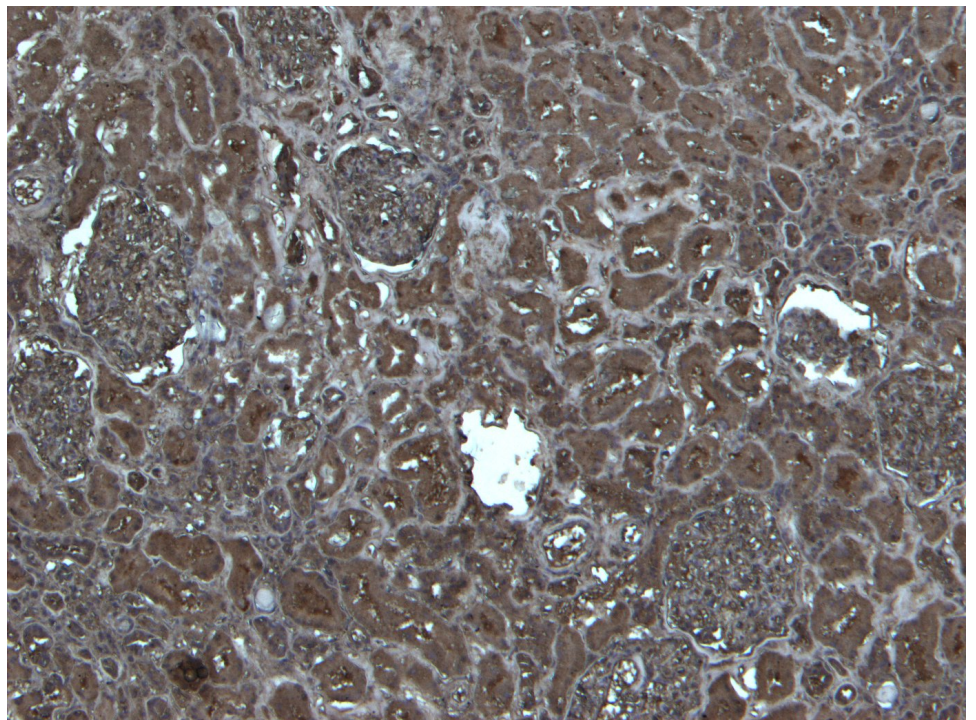
### Species Reactivity

**Tested:** Human

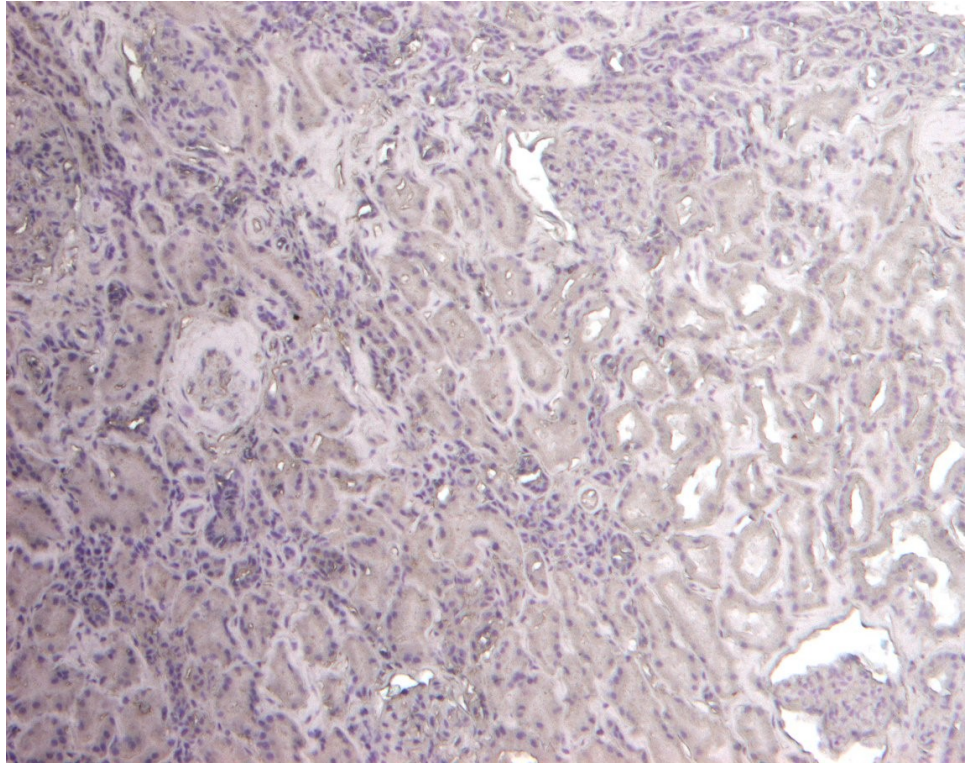
**Expected from sequence similarity:** Human, Dog, Pig, Cow



EB05449 (0.1µg/ml) staining of K562 lysate (35µg protein in RIPA buffer). Detected by chemiluminescence.



EB05449 (5µg/ml) staining of paraffin embedded Human Kidney. Heat induced antigen retrieval with citrate buffer pH 6, HRP-staining.



EB05449 Negative Control showing staining of paraffin embedded Human Kidney, with no primary antibody.