

UK Office

Everest Biotech Ltd

Cherwell Innovation Centre
77 Heyford Park
Upper Heyford
Oxfordshire
OX25 5HD
UK

Enquiries:

info@everestbiotech.com

Sales:

sales@everestbiotech.com

Tech support:

support@everestbiotech.com

Tel: +44 (0)1869 238326

www.everestbiotech.com

**Research Use Only. Not for
diagnostic or therapeutic use.**

EB05448 - Goat Anti-Flotillin 2 / FLOT2 (C Term) Antibody

Size: 100µg specific antibody in 200µl



Target Protein

Principal Names: FLOT2, flotillin 2, reggie-1, ESA, ESA1, M17S1, Flotillin 2 (epidermal surface antigen 1), ECS-1, ECS1, membrane component, chromosome 17, surface marker 1 (35kD protein identified by monoclonal antibody ECS-1)

Official Symbol: FLOT2

Accession Number(s): NP_004466.2

Human GeneID(s): [2319](#)

Immunogen

Peptide with sequence C-SKIPLIKKATGVQV, from the C Terminus of the protein sequence according to NP_004466.2.

Please note the [peptide](#) is available for sale.

Purification and Storage

Purified from goat serum by ammonium sulphate precipitation followed by antigen affinity chromatography using the immunizing peptide.

Supplied at 0.5 mg/ml in Tris saline, 0.02% sodium azide, pH7.3 with 0.5% bovine serum albumin.

Aliquot and store at -20°C. Minimize freezing and thawing.

Applications Tested

Peptide ELISA: antibody detection limit dilution 1:32000.

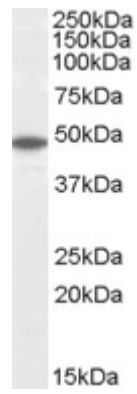
Western blot: Approx 48kDa band observed in Human Brain (Cerebellum), Lung and Testis lysates (calculated MW of 47.1kDa according to NP_004466.2). Recommended concentration: 0.1-0.3µg/ml.

IHC: Paraffin embedded Human Tonsil and Kidney. Recommended concentration: 3.75µg/ml.

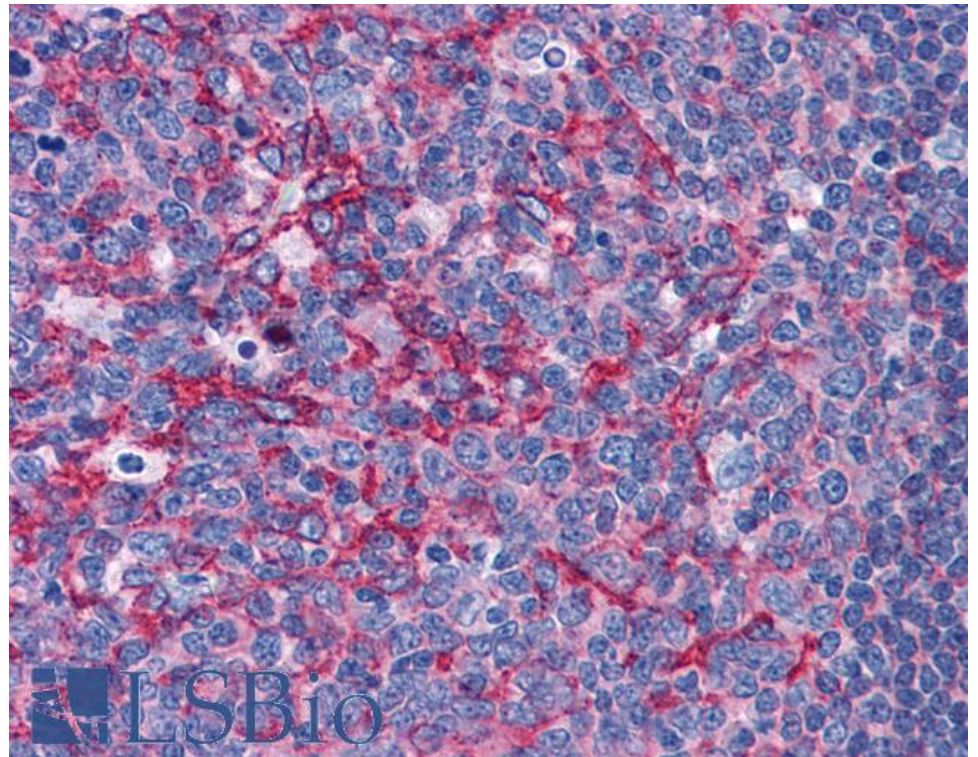
Species Reactivity

Tested: Human

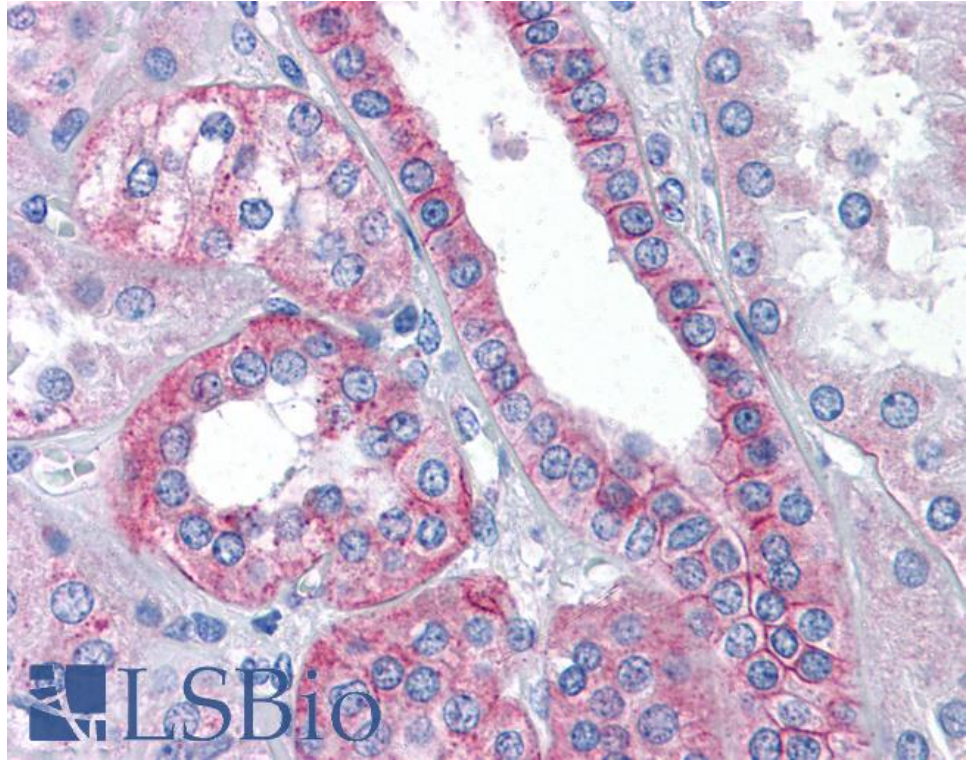
Expected from sequence similarity: Human



EB05448 (0.1 μ g/ml) staining of Human Cerebellum lysate (35 μ g protein in RIPA buffer). Primary incubation was 1 hour. Detected by chemiluminescence.



EB05448 (3.75 μ g/ml) staining of paraffin embedded Human Tonsil. Steamed antigen retrieval with citrate buffer pH 6, AP-staining.



EB05448 (3.75µg/ml) staining of paraffin embedded Human Kidney. Steamed antigen retrieval with citrate buffer pH 6, AP-staining.