



UK Office

Everest Biotech Ltd

Cherwell Innovation Centre
77 Heyford Park
Upper Heyford
Oxfordshire
OX25 5HD
UK

Enquiries:

info@everestbiotech.com

Sales:

sales@everestbiotech.com

Tech support:

support@everestbiotech.com

Tel: +44 (0)1869 238326

Fax: +44 (0)1869 238327

US Office

Everest Biotech c/o Abcore

405 Maple Street, Suite A106
Ramona,
CA 92065
USA

Inquiries:

info@everestbiotech.com

Sales:

usasales@everestbiotech.com

Tech support:

support@everestbiotech.com

Tel: 888-320-4628 (toll-free)

Fax: 888-841-9041

www.everestbiotech.com

**Research Use Only. Not for
diagnostic or therapeutic use.**

EB06000-T - Goat Anti-FOXA2 / HNF3B Antibody - Trial

Size: 20µg specific antibody in 40µl



Target Protein

Principal Names: FOXA2, HNF3B, forkhead box A2, TCF3B, MGC19807, hepatic nuclear factor-3-beta, hepatocyte nuclear factor 3, beta, forkhead box protein A2, HNF-3B, HNF-3-beta, TCF-3B, transcription factor 3B

Official Symbol: FOXA2

Accession Number(s): NP_068556.2; NP_710141.1

Human GeneID(s): [3170](#)

Non-Human GeneID(s): 15376 (mouse), 25099 (rat)

Important Comments: This antibody is expected to recognise both reported isoforms: NP_068556.2; NP_710141.1

Immunogen

Peptide with sequence C-GVYSRPIMNSS, from the C Terminus of the protein sequence according to NP_068556.2; NP_710141.1.

Please note the [peptide](#) is available for sale.

Purification and Storage

Purified from goat serum by ammonium sulphate precipitation followed by antigen affinity chromatography using the immunizing peptide.

Supplied at 0.5 mg/ml in Tris saline, 0.02% sodium azide, pH7.3 with 0.5% bovine serum albumin.

Aliquot and store at -20°C. Minimize freezing and thawing.

Applications Tested

Peptide ELISA: antibody detection limit dilution 1:4000.

Western blot: Approx 60kDa band observed in Human Liver and Rat Lung lysates (calculated MW of 48.3kDa according to Human NP_710141.1 and 48.5kDa according to Rat NP_036875.1). The observed molecular weight corresponds to earlier findings in literature (Wang et al, J Biol Chem. 2002 May 17;277(20):17564-70.; PMID: 11875061). Recommended concentration: 1-3µg/ml. Primary incubation was 1 hour. Preliminary testing was unsuccessful on Mouse Liver and Lung for this particular batch.

IHC: In paraffin embedded Human Prostate shows nuclear staining in the secretory cells of the gland. Recommended concentration: 4-8µg/ml.

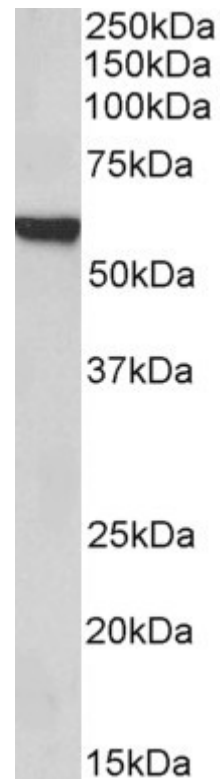
Species Reactivity

Tested: Human, Rat

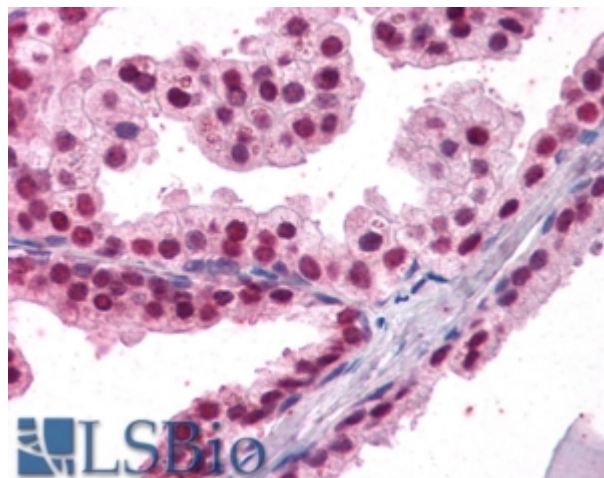
Expected from sequence similarity: Human, Mouse, Rat



EB06000 (1 μ g/ml) staining of Human Liver lysate (35 μ g protein in RIPA buffer). Detected by chemiluminescence.



EB06000 (1 μ g/ml) staining of Rat Lung lysate (35 μ g protein in RIPA buffer). Detected by chemiluminescence



EB06000 (3.8µg/ml) staining of paraffin embedded Human Prostate. Steamed antigen retrieval with citrate buffer pH 6, AP-staining.