



## UK Office

### Everest Biotech Ltd

Cherwell Innovation Centre  
77 Heyford Park  
Upper Heyford  
Oxfordshire  
OX25 5HD  
UK

Enquiries:

[info@everestbiotech.com](mailto:info@everestbiotech.com)

Sales:

[sales@everestbiotech.com](mailto:sales@everestbiotech.com)

Tech support:

[support@everestbiotech.com](mailto:support@everestbiotech.com)

Tel: +44 (0)1869 238326

Fax: +44 (0)1869 238327

## US Office

### Everest Biotech c/o Abcore

405 Maple Street, Suite A106  
Ramona,  
CA 92065  
USA

Inquiries:

[info@everestbiotech.com](mailto:info@everestbiotech.com)

Sales:

[usasales@everestbiotech.com](mailto:usasales@everestbiotech.com)

Tech support:

[support@everestbiotech.com](mailto:support@everestbiotech.com)

Tel: 888-320-4628 (toll-free)

Fax: 888-841-9041

[www.everestbiotech.com](http://www.everestbiotech.com)

**Research Use Only. Not for  
diagnostic or therapeutic use.**

## EB12197 - Goat Anti-FOXF1 Antibody

Size: 100µg specific antibody in 200µl



## Target Protein

**Principal Names:** FOXF1, forkhead box F1, ACDMPV, FKHL5, FREAC1, FREAC-1, Forkhead, drosophila, homolog-like 5, forkhead box protein F1, forkhead-related activator 1, forkhead-related protein FKHL5, forkhead-related transcription factor 1

**Official Symbol:** FOXF1

**Accession Number(s):** NP\_001442.2

**Human GeneID(s):** [2294](#)

**Non-Human GeneID(s):** 15227 (mouse)

## Immunogen

Peptide with sequence HQQVTYQDIKPC, from the C Terminus of the protein sequence according to NP\_001442.2.

Please note the [peptide](#) is available for sale.

## Purification and Storage

Purified from goat serum by ammonium sulphate precipitation followed by antigen affinity chromatography using the immunizing peptide.

Supplied at 0.5 mg/ml in Tris saline, 0.02% sodium azide, pH7.3 with 0.5% bovine serum albumin.

Aliquot and store at -20°C. Minimize freezing and thawing.

## Applications Tested

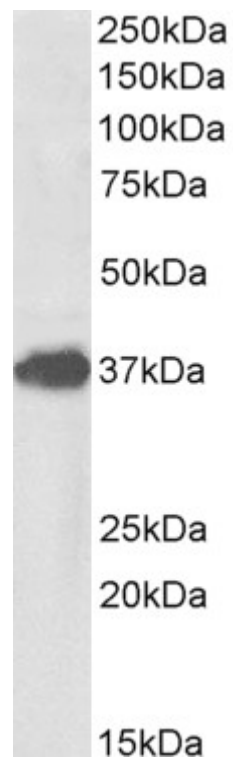
**Peptide ELISA:** antibody detection limit dilution 1:128000.

**Western blot:** Approx 37kDa band observed in Mouse Lung lysates (calculated MW of 40.0kDa according to Mouse NP\_034556.2). Recommended concentration: 1-3µg/ml.

## Species Reactivity

**Tested:** Mouse

**Expected from sequence similarity:** Human, Mouse, Dog, Cow



EB12197 (1 $\mu$ g/ml) staining of Mouse Lung lysate (35 $\mu$ g protein in RIPA buffer). Primary incubation was 1 hour.  
Detected by chemiluminescence.