



## UK Office

### Everest Biotech Ltd

Cherwell Innovation Centre  
77 Heyford Park  
Upper Heyford  
Oxfordshire  
OX25 5HD  
UK

Enquiries:

[info@everestbiotech.com](mailto:info@everestbiotech.com)

Sales:

[sales@everestbiotech.com](mailto:sales@everestbiotech.com)

Tech support:

[support@everestbiotech.com](mailto:support@everestbiotech.com)

Tel: +44 (0)1869 238326

Fax: +44 (0)1869 238327

## US Office

### Everest Biotech c/o Abcore

405 Maple Street, Suite A106  
Ramona,  
CA 92065  
USA

Inquiries:

[info@everestbiotech.com](mailto:info@everestbiotech.com)

Sales:

[usasales@everestbiotech.com](mailto:usasales@everestbiotech.com)

Tech support:

[support@everestbiotech.com](mailto:support@everestbiotech.com)

Tel: 888-320-4628 (toll-free)

Fax: 888-841-9041

[www.everestbiotech.com](http://www.everestbiotech.com)

**Research Use Only. Not for  
diagnostic or therapeutic use.**

## EB05608-T - Goat Anti-FOXG1 / BF2 Antibody - Trial

Size: 20µg specific antibody in 40µl



### Target Protein

**Principal Names:** forkhead box G1, BF1, BF2, FHL3, FKH2, FKHL1, FKHL2, FKHL3, FKHL4, FOXG1A, FOXG1B, FOXG1C, HBF-1, HBF-2, HBF-3, HBF-G2, HBF2, HFK1, HFK2, HFK3, KHL2, QIN, OTTHUMP00000178764, brain factor 2, forkhead box G1A, forkhead box G1B, forkhead box G1C, forkhead, drosophila, homolog-like 2, forkhead-like 1, forkhead-like 2, forkhead-like 3, forkhead-like 4, oncogene QIN

**Official Symbol:** FOXG1

**Accession Number(s):** NP\_005240.3

**Human GeneID(s):** [2290](#)

**Non-Human GeneID(s):** 15228 (mouse), 24370 (rat)

### Immunogen

Peptide with sequence C-HQNQGSSSNPLIH, from the C Terminus of the protein sequence according to NP\_005240.3.

Please note the [peptide](#) is available for sale.

### Purification and Storage

Purified from goat serum by ammonium sulphate precipitation followed by antigen affinity chromatography using the immunizing peptide.

Supplied at 0.5 mg/ml in Tris saline, 0.02% sodium azide, pH7.3 with 0.5% bovine serum albumin.

Aliquot and store at -20°C. Minimize freezing and thawing.

### Applications Tested

**Peptide ELISA:** antibody detection limit dilution 1:64000.

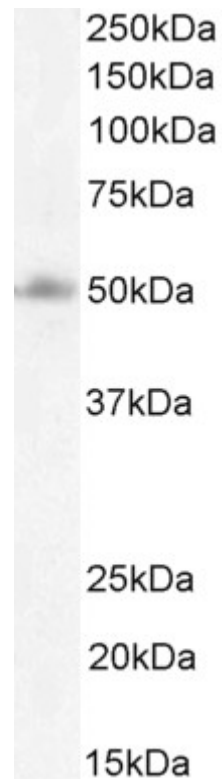
**Western blot:** Approx. 48kDa band observed in lysates of cell line U251, and approx. 48-50kDa in Human Cerebellum and Cerebral Cortex lysates (calculated MW of 52.4kDa according to NP\_005240.3 (FOXG1B), and 50.5kDa according to CAA55038.1 (FOXG1A). An additional band at 70-75kDa was observed in some lysates and was successfully blocked by incubation with the immunizing peptide. Recommended concentration: 0.3-1/ml. Primary incubation 1 hour at room temperature.

**Flow Cytometry:** Flow cytometric analysis of U251 cells. Recommended concentration: 10ug/ml.

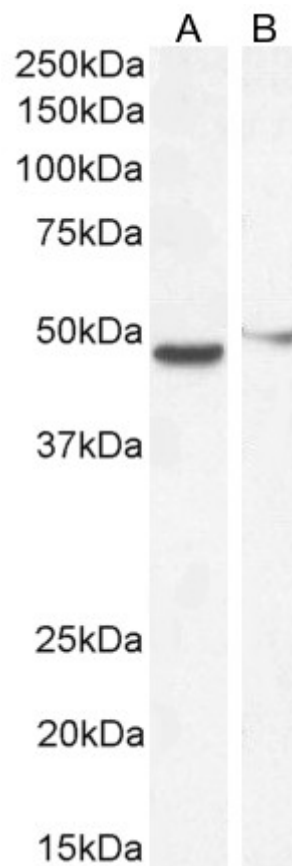
### Species Reactivity

**Tested:** Human

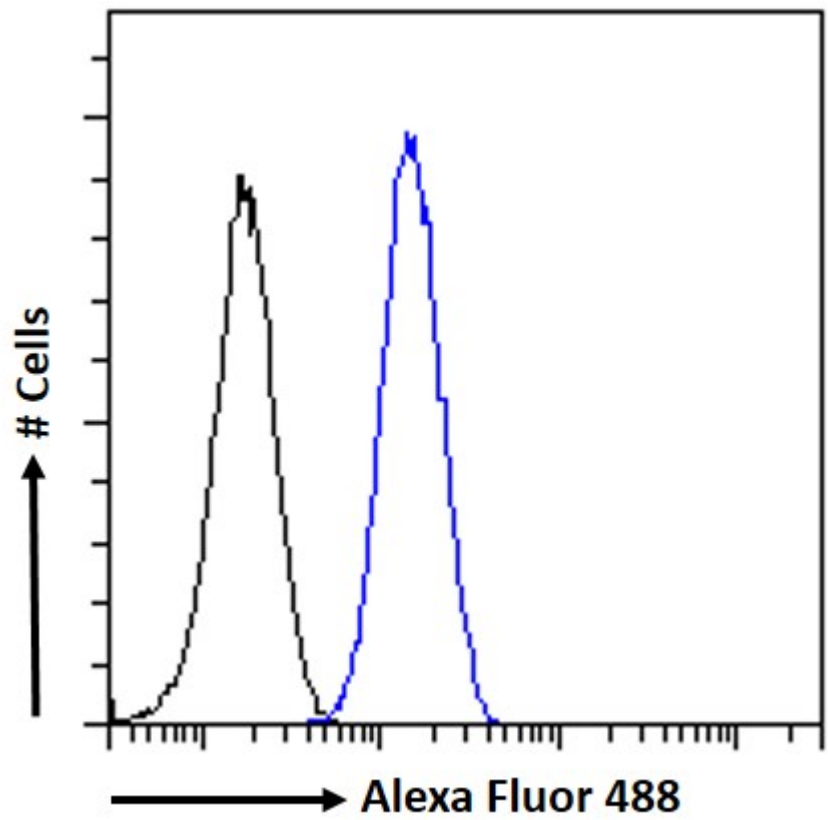
**Expected from sequence similarity:** Human, Mouse, Rat, Dog, Cow



EB05608 (1 $\mu$ g/ml) staining of U251 cell lysate (35 $\mu$ g protein in RIPA buffer). Detected by chemiluminescence.



EB05608 (0.5 $\mu$ g/ml) staining of Human Cerebellum (A) and Cerebral Cortex (B) lysate (35 $\mu$ g protein in RIPA buffer). Detected by chemiluminescence.



EB05608 Flow cytometric analysis of paraformaldehyde fixed U251 cells (blue line), permeabilized with 0.5% Triton. Primary incubation 1hr (10ug/ml) followed by Alexa Fluor 488 secondary antibody (1ug/ml). IgG control: Unimmunized goat IgG (black line) followed by Alexa Fluor 488 secondary antibody.