



EB06022 - Goat Anti-FOXL2 / BPES Antibody

Size: 100µg specific antibody in 200µl



UK Office

Everest Biotech Ltd

Cherwell Innovation Centre
77 Heyford Park
Upper Heyford
Oxfordshire
OX25 5HD
UK

Enquiries:

info@everestbiotech.com

Sales:

sales@everestbiotech.com

Tech support:

support@everestbiotech.com

Tel: +44 (0)1869 238326

Fax: +44 (0)1869 238327

US Office

Everest Biotech c/o Abcore

405 Maple Street, Suite A106
Ramona,
CA 92065
USA

Inquiries:

info@everestbiotech.com

Sales:

usasales@everestbiotech.com

Tech support:

support@everestbiotech.com

Tel: 888-320-4628 (toll-free)

Fax: 888-841-9041

www.everestbiotech.com

Research Use Only. Not for diagnostic or therapeutic use.

Target Protein

Principal Names: FOXL2, BPES, forkhead box L2, PFRK, BPES1, PINTO, forkhead transcription factor FOXL2, blepharophimosis, epicanthus inversus and ptosis, Blepharophimosis, epicanthus inversus, and ptosis 1, POF3

Official Symbol: FOXL2

Accession Number(s): NP_075555.1

Human GeneID(s): [668](#)

Non-Human GeneID(s): 26927 (mouse)

Immunogen

Peptide with sequence C-DSKTGALHSRLDL, from the C Terminus of the protein sequence according to NP_075555.1.

Please note the [peptide](#) is available for sale.

Purification and Storage

Purified from goat serum by ammonium sulphate precipitation followed by antigen affinity chromatography using the immunizing peptide.

Supplied at 0.5 mg/ml in Tris saline, 0.02% sodium azide, pH7.3 with 0.5% bovine serum albumin.

Aliquot and store at -20°C. Minimize freezing and thawing.

Applications Tested

Peptide ELISA: antibody detection limit dilution 1:32000.

Western blot: Approx 50kDa band observed in Human and Mouse Ovary lysates (calculated MW of 38.8kDa according to Human NP_075555.1 and 38.9kDa according to Mouse NP_036150.1). The observed molecular weight corresponds to earlier findings with different antibodies from other commercial sources. Recommended concentration 0.3-1µg/ml. Primary incubation was 1 hour. Preliminary testing was unsuccessful on Rat Ovary for this particular batch.

IHC: In paraffin embedded Human Ovary shows nuclear staining in select cells.

Recommended concentration: 2-4µg/ml. Paraffin embedded Human Adrenal Gland.

Recommended concentration: 5µg/ml.

Species Reactivity

Tested: Human, Mouse

Expected from sequence similarity: Human, Mouse, Rat, Cow

Specific Reference

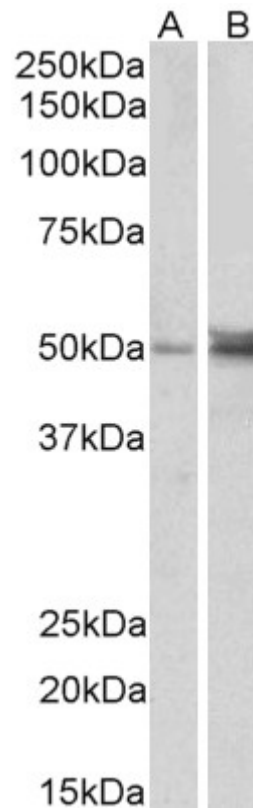
This antibody has been successfully used in IHC and IF on Mouse:

Padua MB, Fox SC, Jiang T, Morse DA, Tevosian SG.

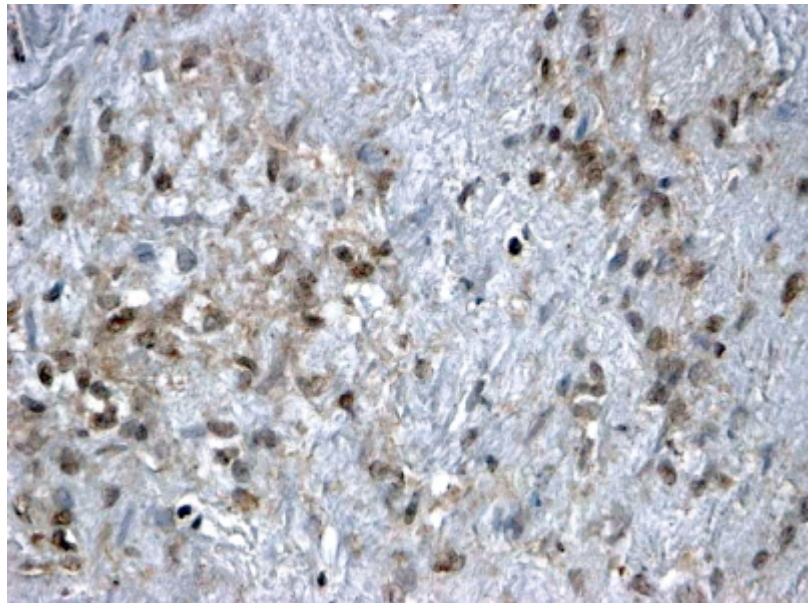
Simultaneous Gene Deletion of Gata4 and Gata6 Leads to Early Disruption of Follicular Development and Germ Cell Loss in the Murine Ovary.

Biol Reprod. 2014 Jun 4.

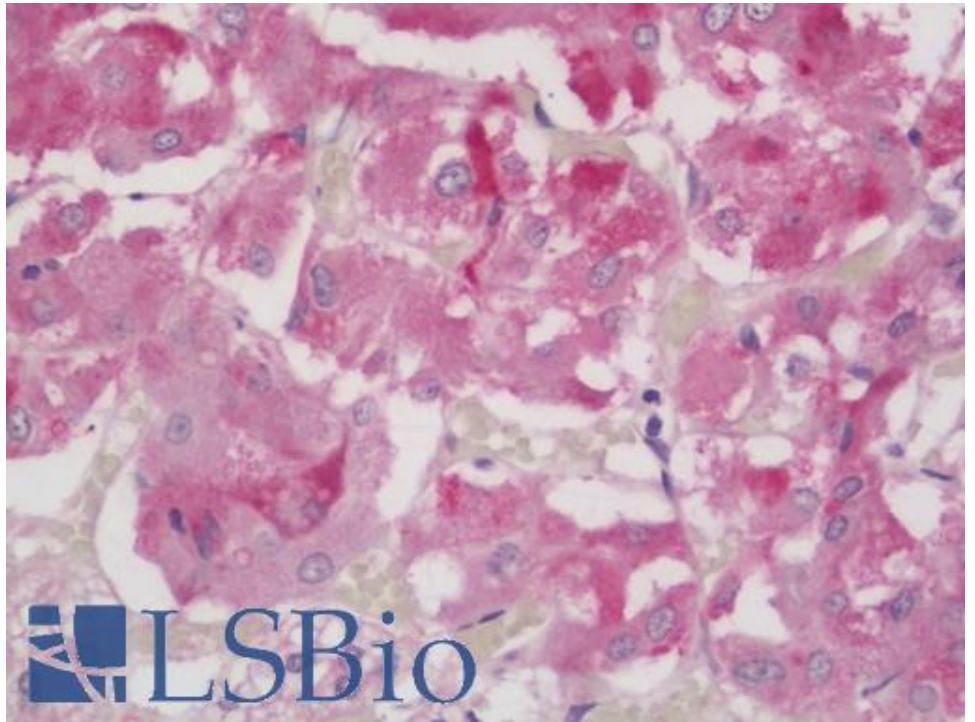
PMID: 24899573



EB06022 (1µg/ml) staining of Human (A) and Mouse (B) Ovary lysate (35µg protein in RIPA buffer). Detected by chemiluminescence.



EB06022 (2µg/ml) staining of paraffin embedded Human Ovary. Steamed antigen retrieval with citrate buffer pH 6, HRP-staining.



EB06022 (5µg/ml) staining of paraffin embedded Human Adrenal Gland. Steamed antigen retrieval with citrate buffer pH 6, AP-staining.