



UK Office

Everest Biotech Ltd

Cherwell Innovation Centre
77 Heyford Park
Upper Heyford
Oxfordshire
OX25 5HD
UK

Enquiries:

info@everestbiotech.com

Sales:

sales@everestbiotech.com

Tech support:

support@everestbiotech.com

Tel: +44 (0)1869 238326

Fax: +44 (0)1869 238327

US Office

Everest Biotech c/o Abcore

405 Maple Street, Suite A106
Ramona,
CA 92065
USA

Inquiries:

info@everestbiotech.com

Sales:

usasales@everestbiotech.com

Tech support:

support@everestbiotech.com

Tel: 888-320-4628 (toll-free)

Fax: 888-841-9041

www.everestbiotech.com

**Research Use Only. Not for
diagnostic or therapeutic use.**

EB06376-T - Goat Anti-FOXP3 / Scurfin (Mouse) Antibody - Trial

Size: 20µg specific antibody in 40µl



Target Protein

Principal Names: Foxp3, forkhead box P3, sf, JM2, scurfin, scurfy, RP23-54C14.1, OTTMUSP00000017952, OTTMUSP00000017961, OTTMUSP00000017962

Official Symbol: Foxp3

Accession Number(s): NP_473380.1

Non-Human GeneID(s): 20371 (mouse), 317382 (rat)

Important Comments: Note - anti-mouse companion product of EB05294

Immunogen

Peptide with sequence KRSQRPNKCSNP, from the C Terminus of the protein sequence according to NP_473380.1.

Please note the [peptide](#) is available for sale.

Purification and Storage

Purified from goat serum by ammonium sulphate precipitation followed by antigen affinity chromatography using the immunizing peptide.

Supplied at 0.5 mg/ml in Tris saline, 0.02% sodium azide, pH7.3 with 0.5% bovine serum albumin.

Aliquot and store at -20°C. Minimize freezing and thawing.

Applications Tested

Peptide ELISA: antibody detection limit dilution 1:32000.

IHC: Paraffin embedded Mouse Spleen. Recommended concentration: 5-6µg/ml.

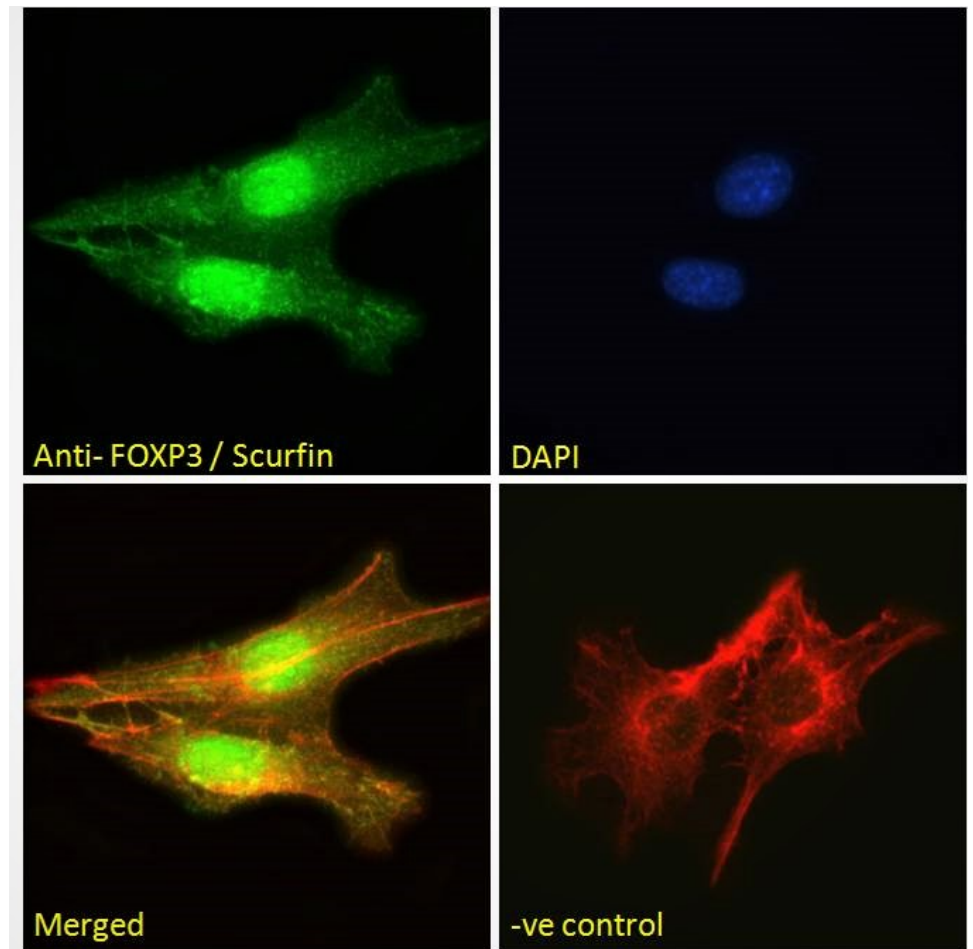
Immunofluorescence: Strong expression of the protein seen in the nuclei of NIH3T3 cells. Recommended concentration: 10µg/ml.

Flow Cytometry: Flow cytometric analysis of NIH3T3 cells. Recommended concentration: 10ug/ml.

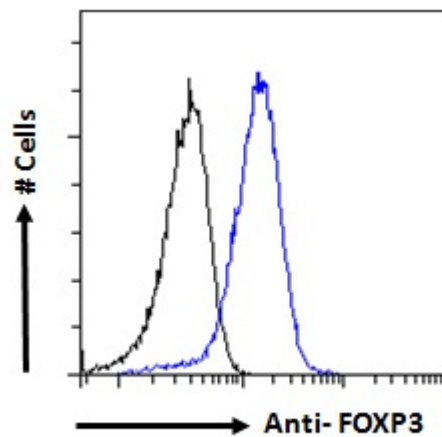
Species Reactivity

Tested: Mouse

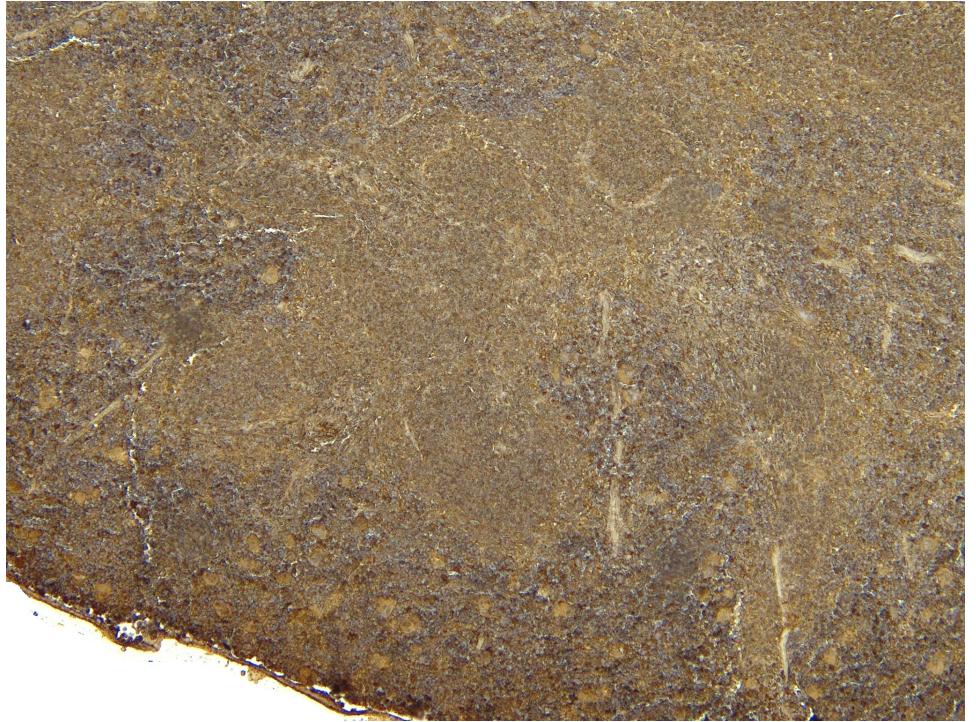
Expected from sequence similarity: Mouse, Rat



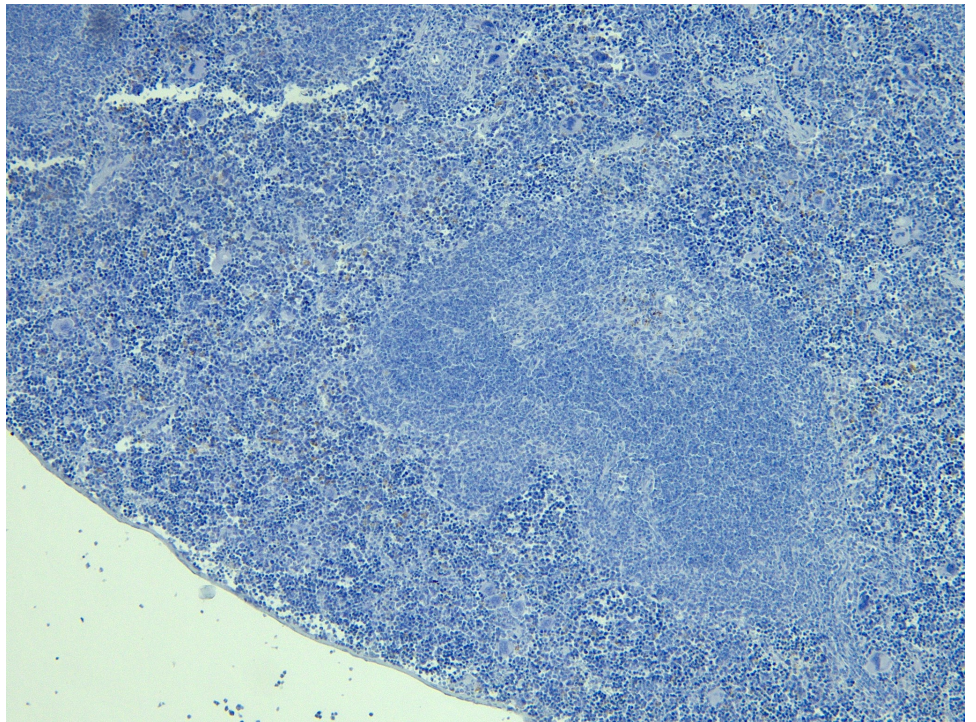
EB06376 Immunofluorescence analysis of paraformaldehyde fixed NIH3T3 cells, permeabilized with 0.15% Triton. Primary incubation 1hr (10ug/ml) followed by Alexa Fluor 488 secondary antibody (2ug/ml), showing nuclear staining. Actin filaments were stained with phalloidin (red) and the nuclear stain is DAPI (blue). Negative control: Unimmunized goat IgG (10ug/ml) followed by Alexa Fluor 488 secondary antibody (2ug/ml).



EB06376 Flow cytometric analysis of paraformaldehyde fixed NIH3T3 cells (blue line), permeabilized with 0.5% Triton. Primary incubation 1hr (10ug/ml) followed by Alexa Fluor 488 secondary antibody (1ug/ml). IgG control: Unimmunized goat IgG (black line) followed by Alexa Fluor 488 secondary antibody.



EB06376 (5 μ g/ml) staining of paraffin embedded Mouse Spleen. Heat induced antigen retrieval with citrate buffer pH 6, HRP-staining.



EB06376 Negative Control showing staining of paraffin embedded Mouse Spleen, with no primary antibody.