



UK Office

Everest Biotech Ltd

Cherwell Innovation Centre
77 Heyford Park
Upper Heyford
Oxfordshire
OX25 5HD
UK

Enquiries:

info@everestbiotech.com

Sales:

sales@everestbiotech.com

Tech support:

support@everestbiotech.com

Tel: +44 (0)1869 238326

Fax: +44 (0)1869 238327

US Office

Everest Biotech c/o Abcore

405 Maple Street, Suite A106
Ramona,
CA 92065
USA

Inquiries:

info@everestbiotech.com

Sales:

usasales@everestbiotech.com

Tech support:

support@everestbiotech.com

Tel: 888-320-4628 (toll-free)

Fax: 888-841-9041

www.everestbiotech.com

**Research Use Only. Not for
diagnostic or therapeutic use.**

EB08353 - Goat Anti-Frizzled 2 Antibody

Size: 100µg specific antibody in 200µl



Target Protein

Principal Names: FZD2, frizzled homolog 2 (Drosophila), frizzled 2

Official Symbol: FZD2

Accession Number(s): NP_001457.1

Human GeneID(s): [2535](#)

Non-Human GeneID(s): 57265 (mouse), 64512 (rat)

Immunogen

Peptide with sequence RYATLEHPFHCPR, from the internal region of the protein sequence according to NP_001457.1.

Please note the [peptide](#) is available for sale.

Purification and Storage

Purified from goat serum by ammonium sulphate precipitation followed by antigen affinity chromatography using the immunizing peptide.

Supplied at 0.5 mg/ml in Tris saline, 0.02% sodium azide, pH7.3 with 0.5% bovine serum albumin.

Aliquot and store at -20°C. Minimize freezing and thawing.

Applications Tested

Peptide ELISA: antibody detection limit dilution 1:64000.

Western blot: Approx 60-65kDa band observed in Human Heart and Placenta lysates (calculated MW of 63.6 kDa according to NP_001457.1) An additional band of approx. 24kDa was also observed in some lysates which was successfully blocked by incubation with the immunizing peptide. Recommended concentration: 0.03-0.1µg/ml. Primary incubation 1 hour at room temperature.

IHC: In paraffin embedded Human Thyroid Gland shows cytoplasm and membranous staining in epithelial cells of the follicles. Recommended concentration: 2-5µg/ml. Paraffin embedded Human Liver. Recommended concentration: 2.5µg/ml.

Immunofluorescence: Strong expression of the protein seen in the nuclei and cytoplasm of U2OS cells. Recommended concentration: 10µg/ml.

Species Reactivity

Tested: Human

Expected from sequence similarity: Human, Mouse, Rat

Specific References

This antibody has been successfully used in IHC:

Alexandra Maráczí, Béla Kajtár, Ádám Nagy, Eszter Györke, Petra Görög, Józsefné Kurucz, Bernadette Kálmán, Ferenc Garzuly

Case report: molecular analysis of congenital glioblastoma in a newborn
Magy Onkol. 2022 Jun 20;66(2):162-167.

PMID: 35724395

This antibody has been successfully used in IHC on Human:

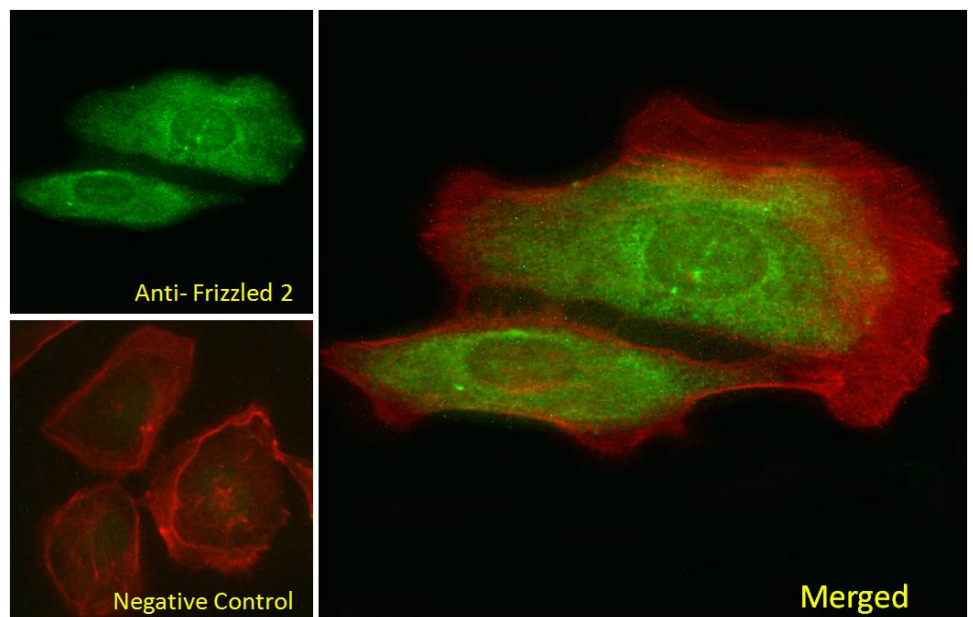
Hirano H, Yonezawa H, Yunoue S, Habu M, Uchida H, Yoshioka T, Kishida S, Kishida M, Oyoshi T, Fujio S, Sugata S, Yamahata H, Hanaya R, Arita K.

Immunoreactivity of Wnt5a, Fzd2, Fzd6, and Ryk in glioblastoma: evaluative methodology for DAB chromogenic immunostaining.

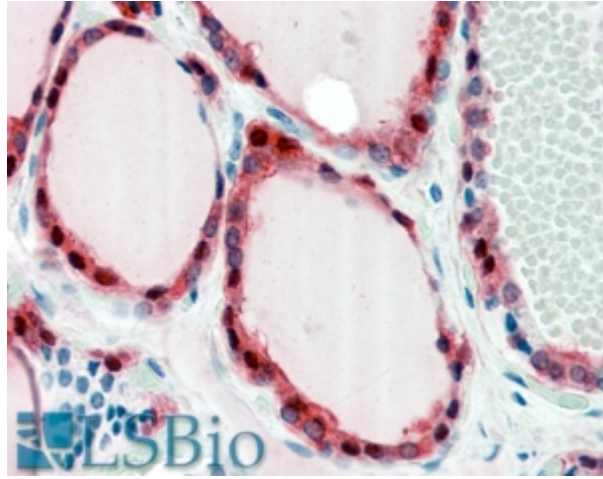
Brain Tumor Pathol. 2014 Apr;31(2):85-93.
PMID: 23748645



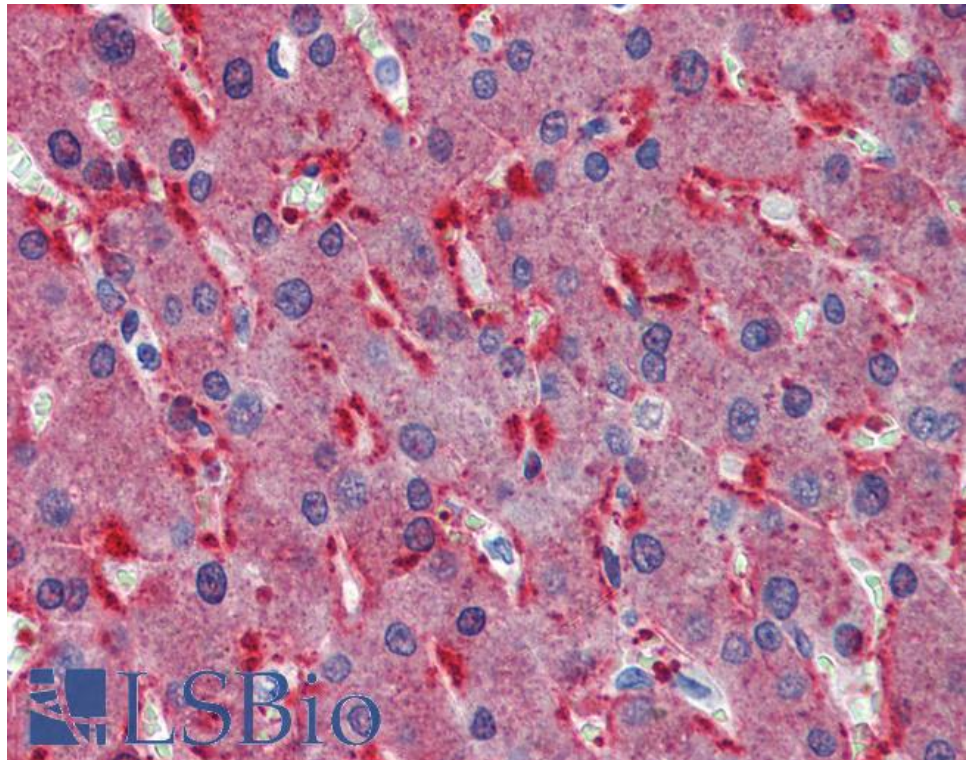
EB08353 (0.03 μ g/ml) staining of Human Heart (A) and (0.1 μ g/ml) Placenta (B) lysate (35 μ g protein in RIPA buffer). Detected by chemiluminescence.



EB08353 Immunofluorescence analysis of paraformaldehyde fixed U2OS cells, permeabilized with 0.15% Triton. Primary incubation 1hr (10 μ g/ml) followed by Alexa Fluor 488 secondary antibody (2 μ g/ml), showing nuclear and cytoplasmic staining. Actin filaments were stained with phalloidin (red). Negative control: Unimmunized goat IgG (10 μ g/ml) followed by Alexa Fluor 488 secondary antibody (2 μ g/ml).



EB08353 (2.5µg/ml) staining of paraffin embedded Human Thyroid Gland. Steamed antigen retrieval with citrate buffer pH 6, AP-staining.



EB08353 (2.5µg/ml) staining of paraffin embedded Human Liver. Steamed antigen retrieval with citrate buffer pH 6, AP-staining.