

## UK Office

### Everest Biotech Ltd

Cherwell Innovation Centre  
77 Heyford Park  
Upper Heyford  
Oxfordshire  
OX25 5HD  
UK

Enquiries:

[info@everestbiotech.com](mailto:info@everestbiotech.com)

Sales:

[sales@everestbiotech.com](mailto:sales@everestbiotech.com)

Tech support:

[support@everestbiotech.com](mailto:support@everestbiotech.com)

Tel: +44 (0)1869 238326

[www.everestbiotech.com](http://www.everestbiotech.com)

**Research Use Only. Not for  
diagnostic or therapeutic use.**

## EB12615 - Goat Anti-FRS2 Antibody

Size: 100µg specific antibody in 200µl



### Target Protein

**Principal Names:** FRS2, fibroblast growth factor receptor substrate 2, FRS2A, FRS2alpha, SNT, SNT-1, SNT1, FGFR signalling adaptor, FGFR substrate 2, FGFR-signaling adaptor SNT, suc1-associated neurotrophic factor target 1

**Official Symbol:** FRS2

**Accession Number(s):** NP\_006645.3

**Human GeneID(s):** [10818](#)

**Non-Human GeneID(s):** 327826 (mouse)

**Important Comments:** Reported variants represent identical protein: NP\_001265284.1, NP\_001265286.1, NP\_001265283.1, NP\_001265285.1, NP\_001265282.1, NP\_006645.3, NP\_001036020.1, NP\_001265280.1

### Immunogen

Peptide with sequence C-SRDEDDNLGPKTPS, from the internal region of the protein sequence according to NP\_006645.3.

Please note the [peptide](#) is available for sale.

### Purification and Storage

Purified from goat serum by ammonium sulphate precipitation followed by antigen affinity chromatography using the immunizing peptide.

Supplied at 0.5 mg/ml in Tris saline, 0.02% sodium azide, pH7.3 with 0.5% bovine serum albumin.

Aliquot and store at -20°C. Minimize freezing and thawing.

### Applications Tested

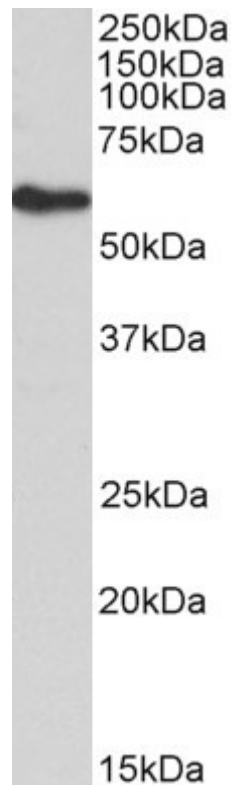
**Peptide ELISA:** antibody detection limit dilution 1:128000.

**Western blot:** Approx 60kDa band observed in lysates of undifferentiated cell line 3T3-L1 (calculated MW of 57.0kDa according to NP\_006645.3). Recommended concentration: 0.1-0.3µg/ml. Primary incubation was 1 hour. Preliminary testing was unsuccessful on Human and Pig for this particular batch.

### Species Reactivity

**Tested:** Mouse

**Expected from sequence similarity:** Human, Mouse, Dog, Pig, Cow



EB12615 (0.1 $\mu$ g/ml) staining of 3T3-L1 lysate (35 $\mu$ g protein in RIPA buffer). Detected by chemiluminescence.