

## UK Office

### Everest Biotech Ltd

Cherwell Innovation Centre  
77 Heyford Park  
Upper Heyford  
Oxfordshire  
OX25 5HD  
UK

Enquiries:

[info@everestbiotech.com](mailto:info@everestbiotech.com)

Sales:

[sales@everestbiotech.com](mailto:sales@everestbiotech.com)

Tech support:

[support@everestbiotech.com](mailto:support@everestbiotech.com)

Tel: +44 (0)1869 238326

[www.everestbiotech.com](http://www.everestbiotech.com)

**Research Use Only. Not for  
diagnostic or therapeutic use.**

## EB08345 - Goat Anti-FSCN1 Antibody

Size: 100µg specific antibody in 200µl



### Target Protein

**Principal Names:** FSCN1, fascin homolog 1, actin-bundling protein (Strongylocentrotus purpuratus), FLJ38511, SNL, p55, Singed, drosophila, homolog-like, actin bundling protein, fascin 1, singed, singed-like (fascin homolog, sea urchin)

**Official Symbol:** FSCN1

**Accession Number(s):** NP\_003079.1

**Human GeneID(s):** [6624](#)

### Immunogen

Peptide with sequence RDTKKCAFRTHT, from the internal region of the protein sequence according to NP\_003079.1.

Please note the [peptide](#) is available for sale.

### Purification and Storage

Purified from goat serum by ammonium sulphate precipitation followed by antigen affinity chromatography using the immunizing peptide.

Supplied at 0.5 mg/ml in Tris saline, 0.02% sodium azide, pH7.3 with 0.5% bovine serum albumin.

Aliquot and store at -20°C. Minimize freezing and thawing.

### Applications Tested

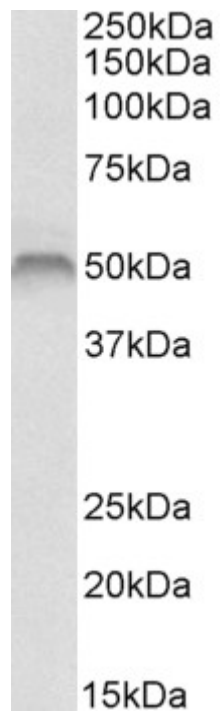
**Peptide ELISA:** antibody detection limit dilution 1:4000.

**Western blot:** Approx 50kDa band observed in Human Skeletal Muscle lysates (calculated MW of 54.5kDa according to NP\_003079.1). Recommended concentration: 1-3µg/ml.

### Species Reactivity

**Tested:** Human

**Expected from sequence similarity:** Human, Mouse, Rat, Cow



EB08345 (1 $\mu$ g/ml) staining of Human Skeletal Muscle lysate (35 $\mu$ g protein in RIPA buffer). Primary incubation was 1 hour. Detected by chemiluminescence.