



Everest Biotech Ltd
Cherwell Innovation Centre
77 Heyford Park
Upper Heyford
Oxfordshire
OX25 5HD, United Kingdom

everestbiotech.com

sales@everestbiotech.com

support@everestbiotech.com

Tel +44 1869 238326

Fax +44 1869 238327

Research Use Only. Not for diagnostic or therapeutic use.

Storage: For long-term storage keep aliquots at -20°C. (Store no longer than 12 months at 4°C). Minimize freezing and thawing.

EB09091 - Goat Anti-FTH1 Antibody

Size: 100µg specific antibody in 200µl



Target Protein

Principal Names: proliferation-inducing protein 15, placenta immunoregulatory factor, apoferritin, PLIF, PIG15, MGC104426, FTHL6, FTH, FHC, ferritin, heavy polypeptide 1, FTH1

Official Symbol: FTH1

Accession Number(s): NP_002023.2

Human GeneID(s): [2495](#)

Immunogen

Peptide with sequence C-DKHTLGSDNES, from the C Terminus of the protein sequence according to NP_002023.2.

Please note the [peptide](#) is available for sale.

Purification and Storage

Purified from goat serum by ammonium sulphate precipitation followed by antigen affinity chromatography using the immunizing peptide.

Supplied at 0.5 mg/ml in Tris saline, 0.02% sodium azide, pH7.3 with 0.5% bovine serum albumin.

Aliquot and store at -20°C. Minimize freezing and thawing.

Applications Tested

Peptide ELISA: antibody detection limit dilution 1:4000.

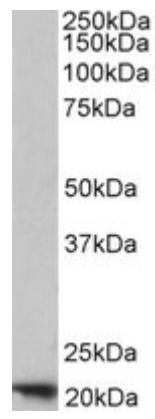
Western blot: Approx. 22kDa band observed in Human Brain (Cerebellum), Liver and Placenta lysates (calculated MW of 21.2kDa according to NP_002023.2). Recommended concentration: 0.03-0.1µg/ml.

IHC: In paraffin embedded Human Kidney shows very strong staining of PCT cytoplasm, but not in DCT cytoplasm. Data obtained from a previous batch (different goat).

Species Reactivity

Tested: Human

Expected from sequence similarity: Human, Dog



EB09091 (1 μ g/ml) staining of Human Placenta lysate (35 μ g protein in RIPA buffer). Primary incubation was 1 hour. Detected by chemiluminescence.