



## UK Office

### Everest Biotech Ltd

Cherwell Innovation Centre  
77 Heyford Park  
Upper Heyford  
Oxfordshire  
OX25 5HD  
UK

Enquiries:

[info@everestbiotech.com](mailto:info@everestbiotech.com)

Sales:

[sales@everestbiotech.com](mailto:sales@everestbiotech.com)

Tech support:

[support@everestbiotech.com](mailto:support@everestbiotech.com)

Tel: +44 (0)1869 238326

Fax: +44 (0)1869 238327

## US Office

### Everest Biotech c/o Abcore

405 Maple Street, Suite A106  
Ramona,  
CA 92065  
USA

Inquiries:

[info@everestbiotech.com](mailto:info@everestbiotech.com)

Sales:

[usasales@everestbiotech.com](mailto:usasales@everestbiotech.com)

Tech support:

[support@everestbiotech.com](mailto:support@everestbiotech.com)

Tel: 888-320-4628 (toll-free)

Fax: 888-841-9041

[www.everestbiotech.com](http://www.everestbiotech.com)

**Research Use Only. Not for  
diagnostic or therapeutic use.**

## EB09092 - Goat Anti-FTL Antibody

Size: 100µg specific antibody in 200µl



## Target Protein

**Principal Names:** FTL, ferritin, light polypeptide, MGC71996, L apoferritin, ferritin L subunit, ferritin L-chain, ferritin light chain, ferritin light polypeptide-like 3, LFTD, NBIA3

**Official Symbol:** FTL

**Accession Number(s):** NP\_000137.2

**Human GeneID(s):** [2512](#)

**Non-Human GeneID(s):** 14325 (mouse), 29292 (rat)

## Immunogen

Peptide with sequence C-GEYLFERLTLKHD, from the C Terminus of the protein sequence according to NP\_000137.2.

Please note the [peptide](#) is available for sale.

## Purification and Storage

Purified from goat serum by ammonium sulphate precipitation followed by antigen affinity chromatography using the immunizing peptide.

Supplied at 0.5 mg/ml in Tris saline, 0.02% sodium azide, pH7.3 with 0.5% bovine serum albumin.

Aliquot and store at -20°C. Minimize freezing and thawing.

## Applications Tested

**Peptide ELISA:** antibody detection limit dilution 1:32000.

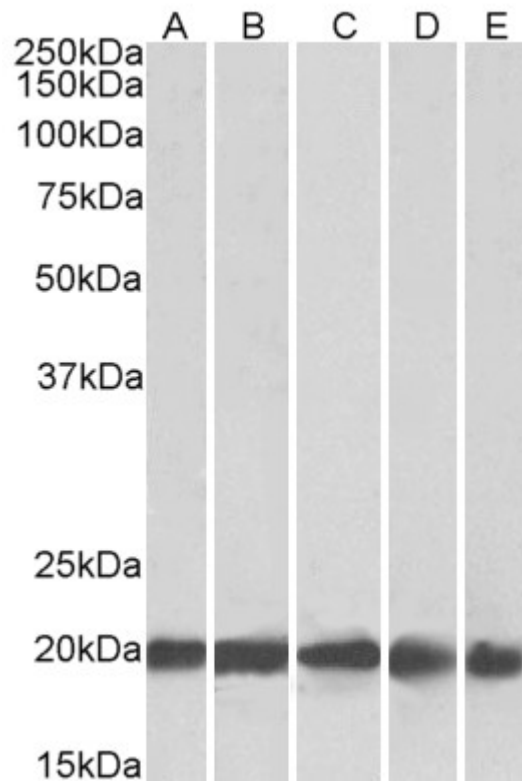
**Western blot:** Approx. 20kDa band observed in Human Brain (Cerebellum), Liver, Placenta and 22kDa in Mouse and Rat Brain lysates (calculated MW of 20.0kDa according to NP\_000137.2). Recommended concentration: 0.3-1.0µg/ml. Primary incubation was 1 hour.

**IHC:** Paraffin embedded Human Spleen. Recommended concentration: 4-6µg/ml.

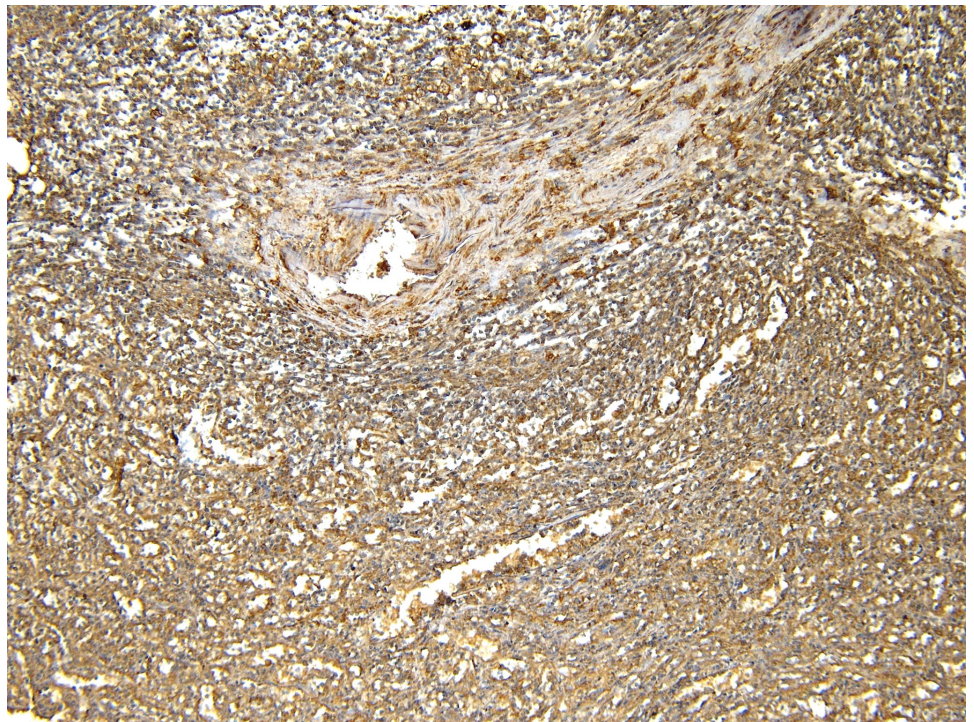
## Species Reactivity

**Tested:** Human, Mouse, Rat

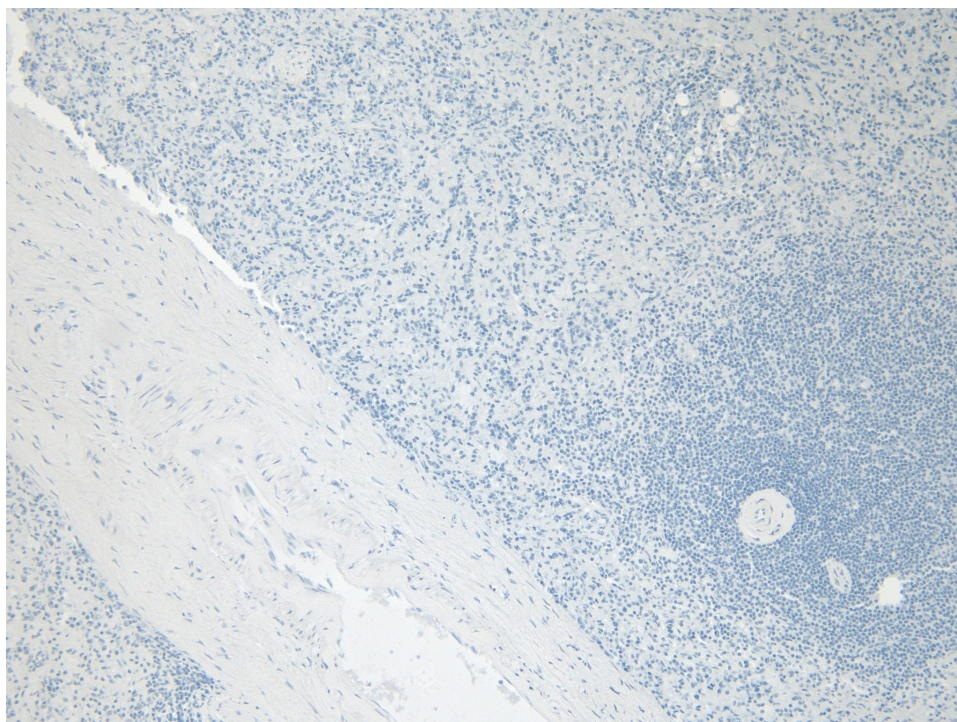
**Expected from sequence similarity:** Human, Mouse, Rat, Dog, Cow



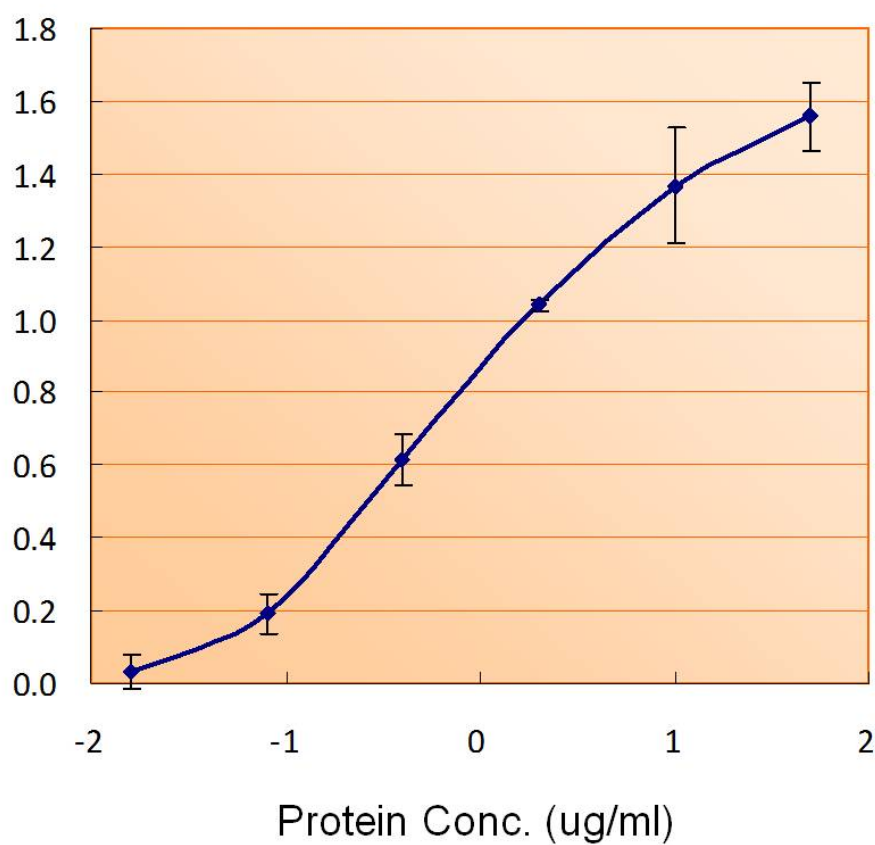
EB09092 (0.3 $\mu$ g/ml) staining of Human Brain (Cerebellum) (A), Liver (B), Human Placenta (C) 22kDa in Mouse Brain (D), Rat Brain lysate (35 $\mu$ g protein in RIPA buffer). Detected by chemiluminescence.



EB09092 (4 $\mu$ g/ml) staining of paraffin embedded Human Spleen. Heat induced antigen retrieval with citrate buffer pH 6, HRP-staining.



EB09092 Negative Control showing staining of paraffin embedded Human Spleen, with no primary antibody.



EB09092 (1.5ug/ml) as the reporter with EB002025 as the capture rabbit antibody (5ug/ml). **This data is from a previous batch, not on sale.**