



UK Office

Everest Biotech Ltd

Cherwell Innovation Centre
77 Heyford Park
Upper Heyford
Oxfordshire
OX25 5HD
UK

Enquiries:

info@everestbiotech.com

Sales:

sales@everestbiotech.com

Tech support:

support@everestbiotech.com

Tel: +44 (0)1869 238326

Fax: +44 (0)1869 238327

US Office

Everest Biotech c/o Abcore

405 Maple Street, Suite A106
Ramona,
CA 92065
USA

Inquiries:

info@everestbiotech.com

Sales:

usasales@everestbiotech.com

Tech support:

support@everestbiotech.com

Tel: 888-320-4628 (toll-free)

Fax: 888-841-9041

www.everestbiotech.com

**Research Use Only. Not for
diagnostic or therapeutic use.**

EB07841 - Goat Anti-G6PD (aa 308 - 320) Antibody

Size: 100µg specific antibody in 200µl



Target Protein

Principal Names: G6PD, glucose-6-phosphate dehydrogenase, G6PD1, glucose-6-phosphate 1-dehydrogenase, glucose-6-phosphate dehydrogenase, G6PD

Official Symbol: G6PD

Accession Number(s): NP_000393.4 ; NP_001035810.1

Human GeneID(s): [2539](#)

Non-Human GeneID(s): 14381 (mouse), 24377 (rat)

Important Comments: This antibody is expected to recognise both reported isoforms (NP_000393.4 and NP_001035810.1).

Immunogen

Peptide with sequence C-STNSDDVRDEKVK, from the internal region of the protein sequence according to NP_000393.4 ; NP_001035810.1.

Please note the [peptide](#) is available for sale.

Purification and Storage

Purified from goat serum by ammonium sulphate precipitation followed by antigen affinity chromatography using the immunizing peptide.

Supplied at 0.5 mg/ml in Tris saline, 0.02% sodium azide, pH7.3 with 0.5% bovine serum albumin.

Aliquot and store at -20°C. Minimize freezing and thawing.

Applications Tested

Peptide ELISA: antibody detection limit dilution 1:32000.

Western blot: Approx 55-60kDa double band observed in Human Testis, Thyroid and Tonsil lysates (calculated MW of 62.5kDa according to NP_000393.4 and 59.3kDa according to NP_001035810.1). Recommended concentration: 0.03-0.1µg/ml. Primary incubation was 1 hour.

IHC: Paraffin embedded Human Testis and Spleen. Recommended concentration: 2.5µg/ml.

Additional validation: This antibody has been successfully used in the following paper: Sikorski et al. (2018) PMID: 30377371.

Species Reactivity

Tested: Human

Expected from sequence similarity: Human, Mouse, Rat, Dog

Specific References

This antibody has been successfully used in the following paper:

Adriana Ann Garcia, Irimpan I. Mathews, Naoki Horikoshi, Tsutomu Matsui, Manat Kaur, Soichi Wakatsuki, and Daria Mochly-Rosen

Stabilization of glucose-6-phosphate dehydrogenase oligomers enhances catalytic activity and stability of clinical variants.

J Biol Chem. 2022 Mar; 298(3): 101610.

PMID: 35065072

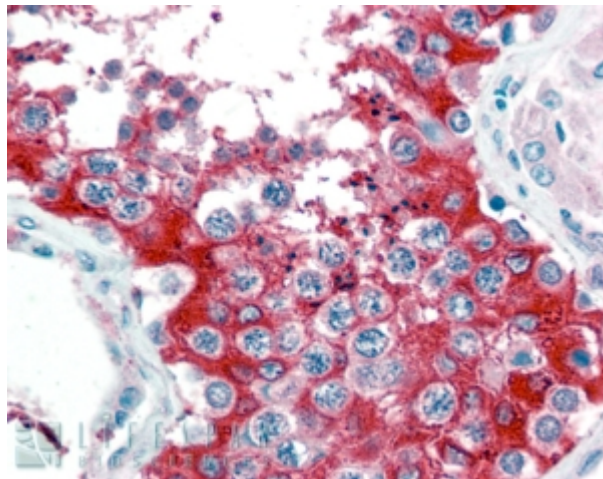
This antibody has been successfully used in the following paper:

Krzysztof Sikorski, Adi Mehta, Marit Inngjerdingen, Flourina Thakor, Simon Kling, Tomas Kalina, Tuula A. Nyman, Maria Ekman Stensland, Wei Zhou, Gustavo A. De Souza, Lars

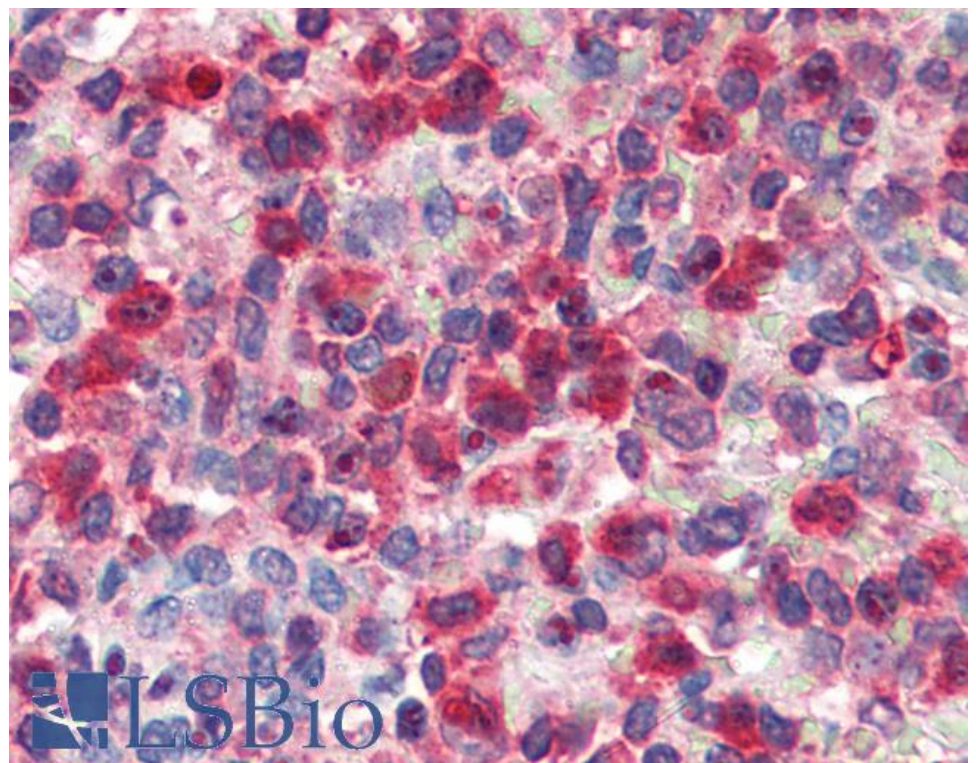
Holden, Jan Stuchly, Markus Templin and Fridtjof Lund-Johansen
A high-throughput pipeline for validation of antibodies
Nat Methods. 2018 Nov;15(11):909-912
PMID: 30377371

250kDa
150kDa
100kDa
75kDa
50kDa
37kDa
25kDa
20kDa
15kDa

EB07841 (0.03 μ g/ml) staining of Human Testis lysate (35 μ g protein in RIPA buffer). Detected by chemiluminescence.



EB07841 (2.5 μ g/ml) staining of paraffin embedded Human Testis. Steamed antigen retrieval with citrate buffer pH 6, AP-staining.



EB07841 (2.5µg/ml) staining of paraffin embedded Human Spleen. Steamed antigen retrieval with citrate buffer pH 6, AP-staining.