



## UK Office

### Everest Biotech Ltd

Cherwell Innovation Centre  
77 Heyford Park  
Upper Heyford  
Oxfordshire  
OX25 5HD  
UK

Enquiries:

[info@everestbiotech.com](mailto:info@everestbiotech.com)

Sales:

[sales@everestbiotech.com](mailto:sales@everestbiotech.com)

Tech support:

[support@everestbiotech.com](mailto:support@everestbiotech.com)

Tel: +44 (0)1869 238326

Fax: +44 (0)1869 238327

## US Office

### Everest Biotech c/o Abcore

405 Maple Street, Suite A106  
Ramona,  
CA 92065  
USA

Inquiries:

[info@everestbiotech.com](mailto:info@everestbiotech.com)

Sales:

[usasales@everestbiotech.com](mailto:usasales@everestbiotech.com)

Tech support:

[support@everestbiotech.com](mailto:support@everestbiotech.com)

Tel: 888-320-4628 (toll-free)

Fax: 888-841-9041

[www.everestbiotech.com](http://www.everestbiotech.com)

**Research Use Only. Not for  
diagnostic or therapeutic use.**

## EB07818 - Goat Anti-GABPB2 Antibody

Size: 100µg specific antibody in 200µl



### Target Protein

**Principal Names:** GABPB2, GA binding protein transcription factor, beta subunit 2, BABPB2, E4TF1, E4TF1-47, E4TF1-53, E4TF1B, GABPB, GABPB1, NRF2B1, NRF2B2, GA binding protein transcription factor, beta subunit 1, 53kDa, GA binding protein transcription factor, beta subunit 2, 47kDa, nuclear respiratory factor-2 subunit beta

**Official Symbol:** GABPB1

**Accession Number(s):** NP\_005245.2; NP\_002032.2; NP\_001307844.1

**Human GeneID(s):** [2553](#)

### Immunogen

Peptide with sequence C-SSSENSKATDETG, from the internal region of the protein sequence according to NP\_005245.2; NP\_002032.2; NP\_001307844.1.

Please note the [peptide](#) is available for sale.

### Purification and Storage

Purified from goat serum by ammonium sulphate precipitation followed by antigen affinity chromatography using the immunizing peptide.

Supplied at 0.5 mg/ml in Tris saline, 0.02% sodium azide, pH7.3 with 0.5% bovine serum albumin.

Aliquot and store at -20°C. Minimize freezing and thawing.

### Applications Tested

**Peptide ELISA:** antibody detection limit dilution 1:32000.

**Western blot:** Approx 45+38kDa bands observed in lysates of cell line HeLa (calculated MW of 42.5kDa according to NP\_005245.2, NP\_001307844.1 and of 38.1kDa according to NP\_002032.2). An additional band of unknown identity was also consistently observed at 22kDa and was successfully blocked by incubation with the immunising peptide.

Recommended concentration: 0.3-1µg/ml. Primary incubation 1 hour at room temperature.

**IHC:** Paraffin embedded Human Tonsil and Spleen. Recommended concentration: 3.75µg/ml.

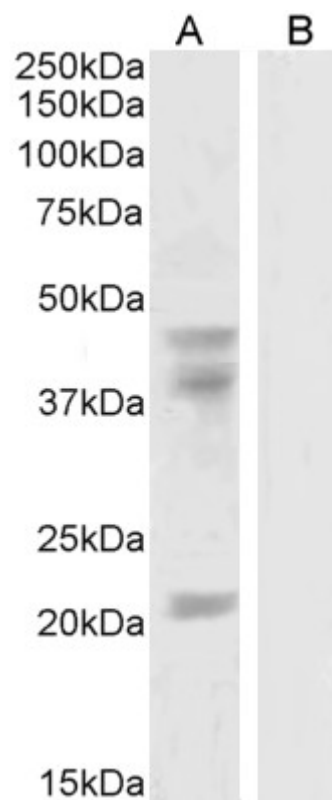
**Immunofluorescence:** Strong expression of the protein seen in the nuclei of HeLa and U2OS cells. Recommended concentration: 10µg/ml.

**Flow Cytometry:** Flow cytometric analysis of HEK293 cells. Recommended concentration: 10ug/ml.

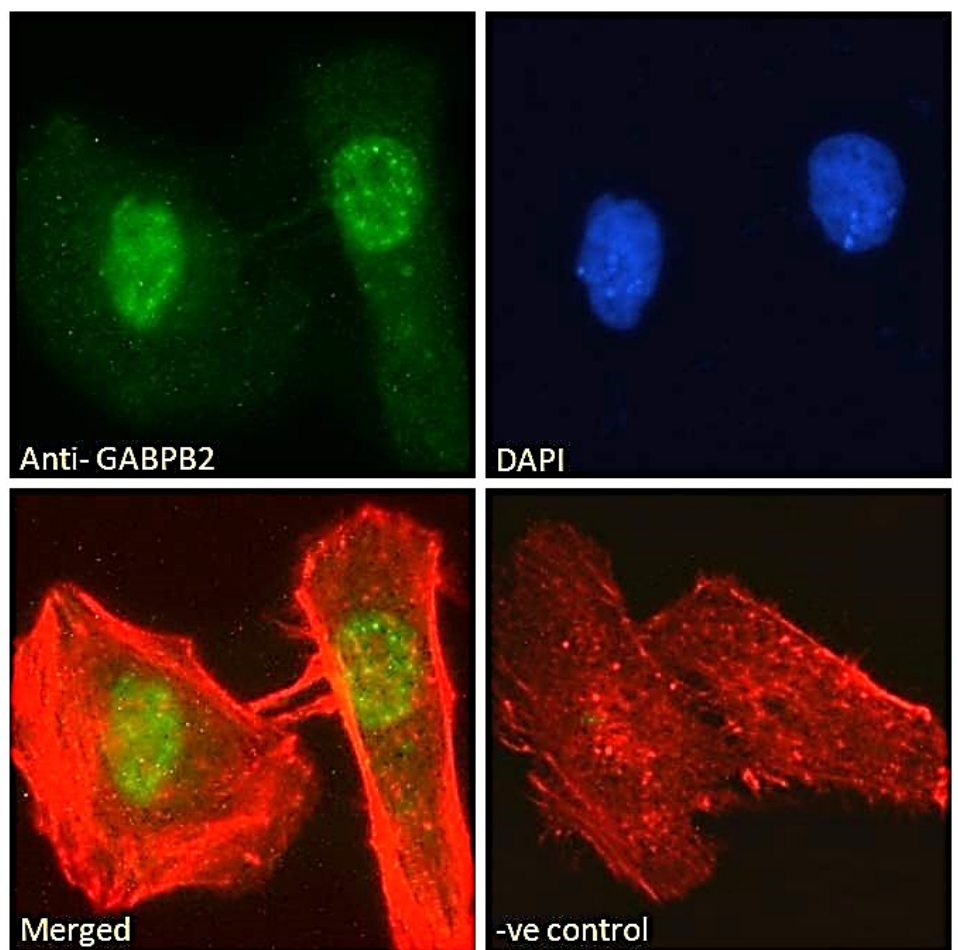
### Species Reactivity

**Tested:** Human

**Expected from sequence similarity:** Human, Dog

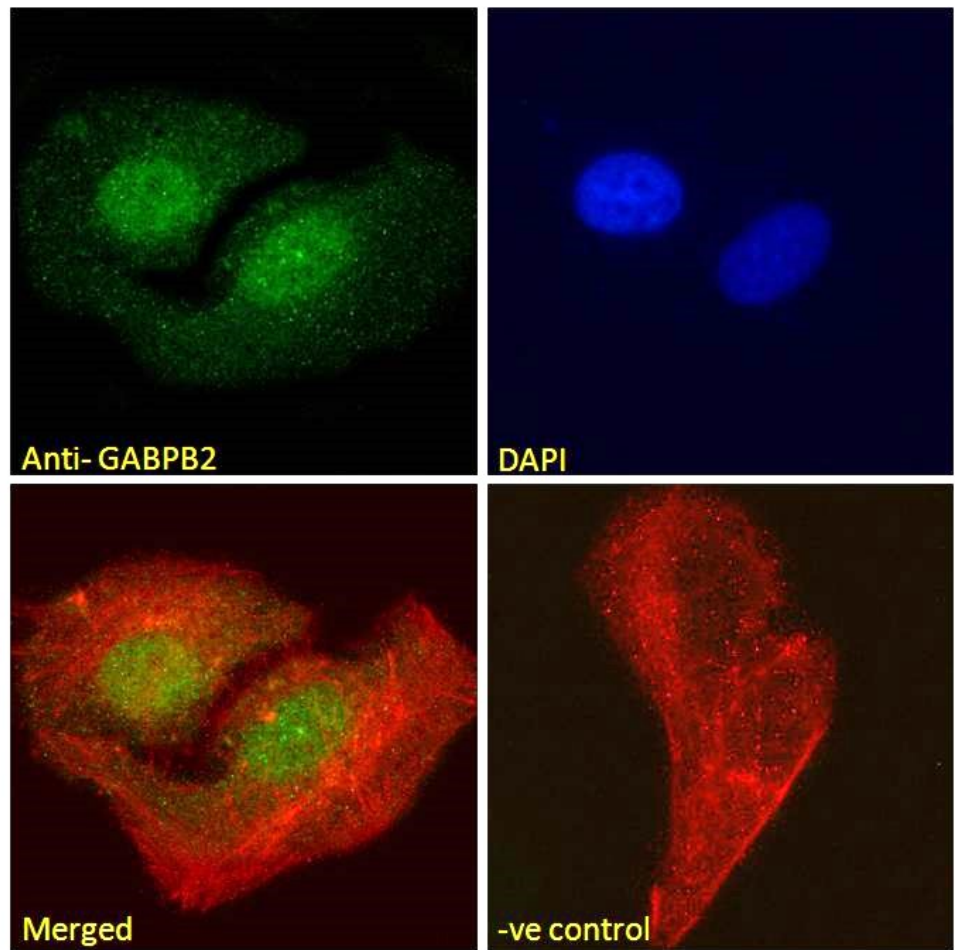


EB07818 (0.3 $\mu$ g/ml) staining of HeLa cell lysate (A) + peptide (B) (35 $\mu$ g protein in RIPA buffer). Detected by chemiluminescence.



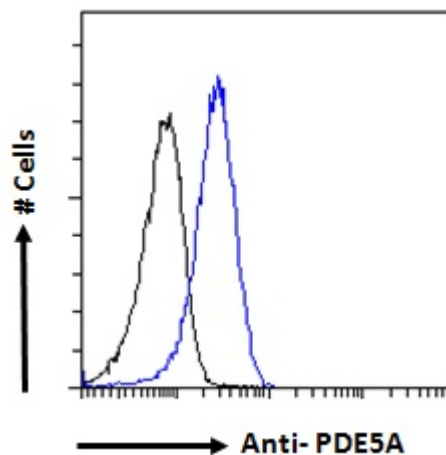
EB07818 Immunofluorescence analysis of paraformaldehyde fixed HeLa cells, permeabilized with 0.15% Triton.

Primary incubation 1hr (10ug/ml) followed by Alexa Fluor 488 secondary antibody (2ug/ml), showing nuclear/nuclear speckle staining. Actin filaments were stained with phalloidin (red) and the nuclear stain is DAPI (blue). Negative control: Unimmunized goat IgG (10ug/ml) followed by Alexa Fluor 488 secondary antibody (2ug/ml).



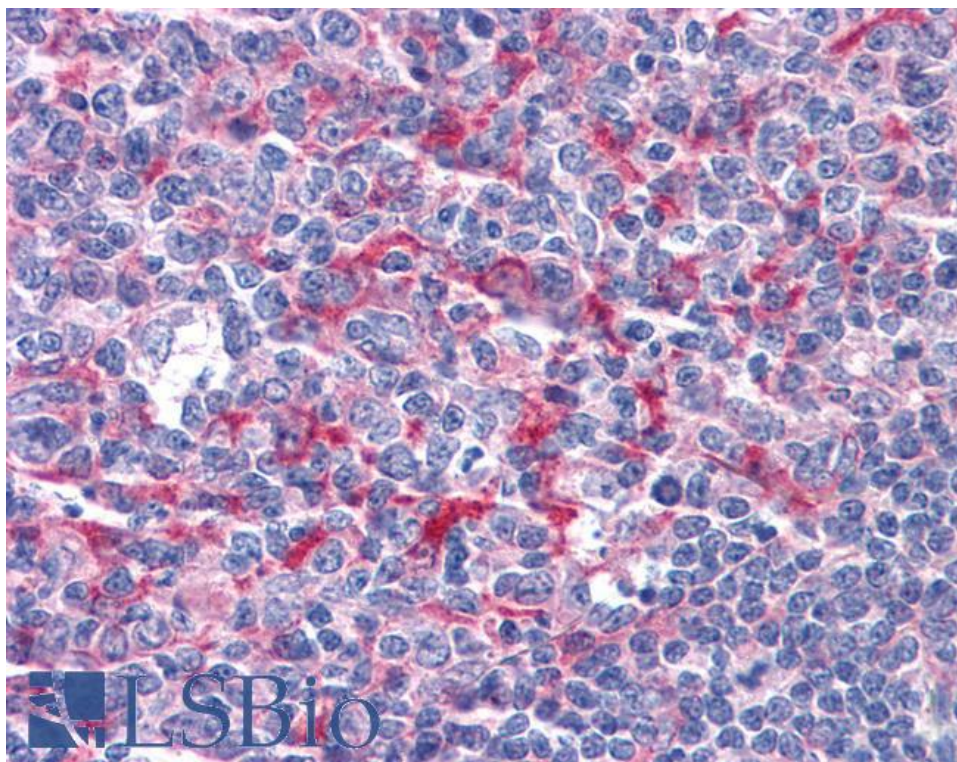
EB07818 Immunofluorescence analysis of paraformaldehyde fixed U2OS cells, permeabilized with 0.15% Triton.

Primary incubation 1hr (10ug/ml) followed by Alexa Fluor 488 secondary antibody (2ug/ml), showing nuclear staining. Actin filaments were stained with phalloidin (red) and the nuclear stain is DAPI (blue). Negative control: Unimmunized goat IgG (10ug/ml) followed by Alexa Fluor 488 secondary antibody (2ug/ml).

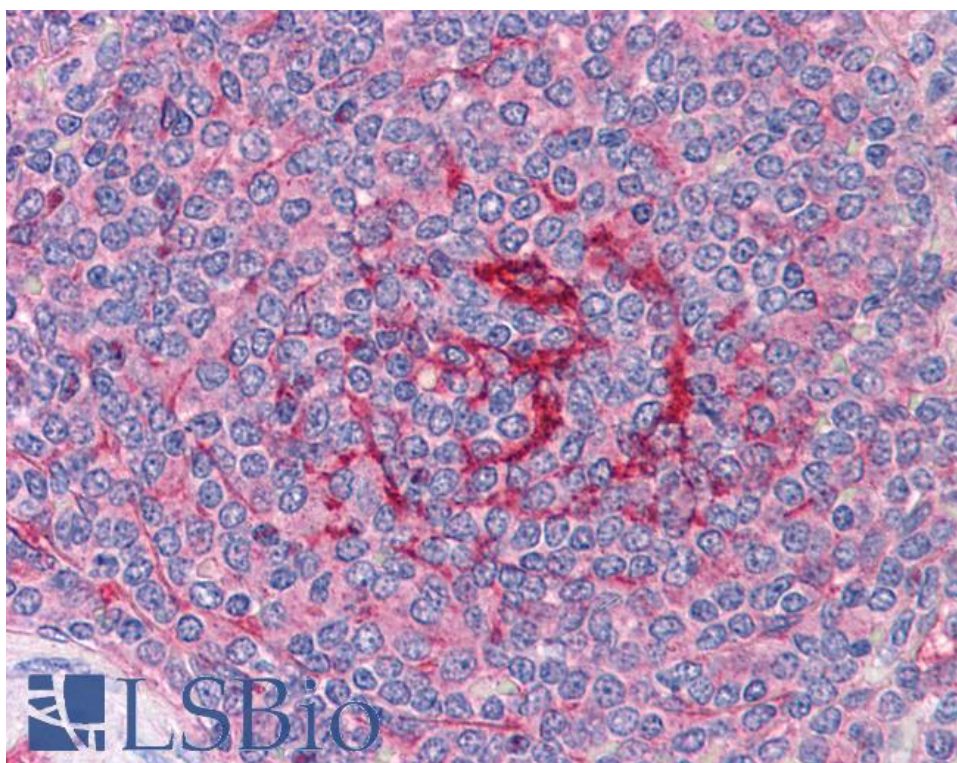


EB07818 Flow cytometric analysis of paraformaldehyde fixed HEK293 cells (blue line), permeabilized with 0.5% Triton. Primary incubation 1hr (10ug/ml) followed by Alexa Fluor 488 secondary antibody (1ug/ml). IgG control: Unimmunized goat IgG (black line) followed by Alexa Fluor 488 secondary antibody.





EB07818 (3.75µg/ml) staining of paraffin embedded Human Tonsil. Steamed antigen retrieval with citrate buffer pH 6, AP-staining.



EB07818 (3.75µg/ml) staining of paraffin embedded Human Spleen. Steamed antigen retrieval with citrate buffer pH 6, AP-staining.