



UK Office

Everest Biotech Ltd

Cherwell Innovation Centre
77 Heyford Park
Upper Heyford
Oxfordshire
OX25 5HD
UK

Enquiries:

info@everestbiotech.com

Sales:

sales@everestbiotech.com

Tech support:

support@everestbiotech.com

Tel: +44 (0)1869 238326

Fax: +44 (0)1869 238327

US Office

Everest Biotech c/o Abcore

405 Maple Street, Suite A106
Ramona,
CA 92065
USA

Inquiries:

info@everestbiotech.com

Sales:

usasales@everestbiotech.com

Tech support:

support@everestbiotech.com

Tel: 888-320-4628 (toll-free)

Fax: 888-841-9041

www.everestbiotech.com

**Research Use Only. Not for
diagnostic or therapeutic use.**

EB10993 - Goat Anti-GABRA6 (aa15-26) Antibody

Size: 100µg specific antibody in 200µl



Target Protein

Principal Names: GABRA6, gamma-aminobutyric acid (GABA) A receptor, alpha 6, MGC116903, MGC116904, GABA subunit A receptor alpha 6, GABA(A) receptor subunit alpha-6, gamma-aminobutyric acid receptor subunit alpha-6

Official Symbol: GABRA6

Accession Number(s): NP_000802.2

Human GeneID(s): [2559](#)

Immunogen

Peptide with sequence ENALGKLEVEGN-C, from the N Terminus of the protein sequence according to NP_000802.2.

Please note the [peptide](#) is available for sale.

Purification and Storage

Purified from goat serum by ammonium sulphate precipitation followed by antigen affinity chromatography using the immunizing peptide.

Supplied at 0.5 mg/ml in Tris saline, 0.02% sodium azide, pH7.3 with 0.5% bovine serum albumin.

Aliquot and store at -20°C. Minimize freezing and thawing.

Applications Tested

Peptide ELISA: antibody detection limit dilution 1:32000.

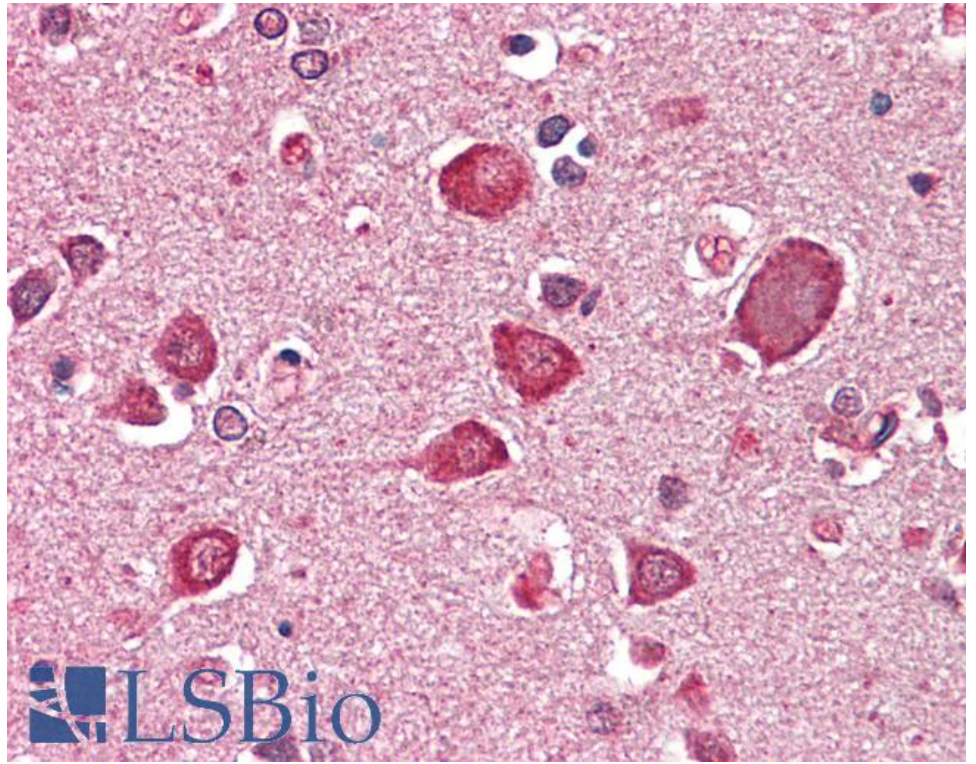
Western blot: Preliminary experiments gave bands at approx 75kDa and 37kDa in Human Cerebellum lysates after 0.3µg/ml antibody staining. Please note that currently we cannot find an explanation in the literature for the bands we observe given the calculated size of 51.0kDa according to NP_000802.2. Both detected bands were successfully blocked by incubation with the immunizing peptide (and BLAST results with the immunizing peptide sequence did not identify any other proteins to explain the additional bands).

IHC: Paraffin embedded Human Brain (Cortex). Recommended concentration: 5µg/ml.

Species Reactivity

Tested: Human

Expected from sequence similarity: Human, Pig, Cow



EB10993 (5µg/ml) staining of paraffin embedded Human Cortex. Steamed antigen retrieval with citrate buffer pH 6, AP-staining.