



## UK Office

### Everest Biotech Ltd

Cherwell Innovation Centre  
77 Heyford Park  
Upper Heyford  
Oxfordshire  
OX25 5HD  
UK

Enquiries:

[info@everestbiotech.com](mailto:info@everestbiotech.com)

Sales:

[sales@everestbiotech.com](mailto:sales@everestbiotech.com)

Tech support:

[support@everestbiotech.com](mailto:support@everestbiotech.com)

Tel: +44 (0)1869 238326

Fax: +44 (0)1869 238327

## US Office

### Everest Biotech c/o Abcore

405 Maple Street, Suite A106  
Ramona,  
CA 92065  
USA

Inquiries:

[info@everestbiotech.com](mailto:info@everestbiotech.com)

Sales:

[usasales@everestbiotech.com](mailto:usasales@everestbiotech.com)

Tech support:

[support@everestbiotech.com](mailto:support@everestbiotech.com)

Tel: 888-320-4628 (toll-free)

Fax: 888-841-9041

[www.everestbiotech.com](http://www.everestbiotech.com)

**Research Use Only. Not for  
diagnostic or therapeutic use.**

## EB09097 - Goat Anti-GABRB3 Antibody

Size: 100µg specific antibody in 200µl



### Target Protein

**Principal Names:** GABRB3, gamma-aminobutyric acid (GABA) A receptor, beta 3, MGC9051, GABA(A) receptor beta-3 subunit, GABA-A receptor beta-3 subunit, GABA-alpha receptor beta-2 subunit, GABAA receptor beta-3 subunit

**Official Symbol:** GABRB3

**Accession Number(s):** NP\_000805.1; NP\_068712.1

**Human GeneID(s):** [2562](#)

**Non-Human GeneID(s):** 14402 (mouse), 24922 (rat)

**Important Comments:** This antibody is expected to recognize both reported isoforms (NP\_000805.1, NP\_068712.1).

### Immunogen

Peptide with sequence C-EKTAKAKNDRSK, from the internal region of the protein sequence according to NP\_000805.1; NP\_068712.1.

Please note the [peptide](#) is available for sale.

### Purification and Storage

Purified from goat serum by ammonium sulphate precipitation followed by antigen affinity chromatography using the immunizing peptide.

Supplied at 0.5 mg/ml in Tris saline, 0.02% sodium azide, pH7.3 with 0.5% bovine serum albumin.

Aliquot and store at -20°C. Minimize freezing and thawing.

### Applications Tested

**Peptide ELISA:** antibody detection limit dilution 1:8000.

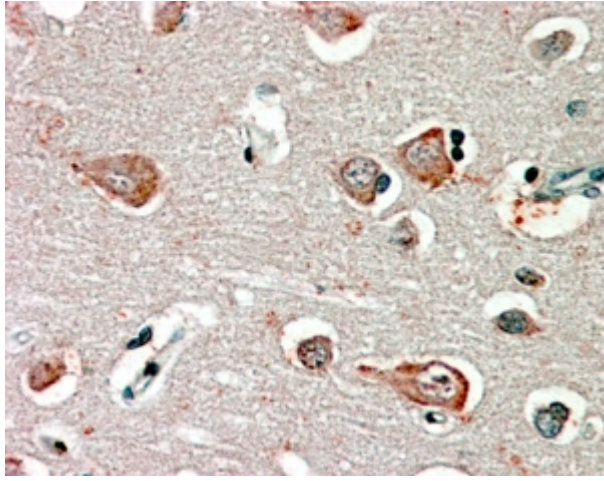
**Western blot:** Preliminary experiments in Human Brain (Cerebral Cortex, Frontal Cortex and Cerebellum) lysates gave no specific signal but low background (at antibody concentration up to 1µg/ml). We would appreciate any feedback from people in the field - have any results been reported with other antibodies/lysates?

**IHC:** In paraffin embedded Human Cortex shows patchy staining near or at the neuronal cell membrane.. Recommended concentration, 2-4µg/ml.

### Species Reactivity

**Tested:** Human

**Expected from sequence similarity:** Human, Mouse, Rat, Dog, Cow



EB09097 (2.5µg/ml) staining of paraffin embedded Human Cortex. Steamed antigen retrieval with citrate buffer pH 6, AP-staining.