



UK Office

Everest Biotech Ltd

Cherwell Innovation Centre
77 Heyford Park
Upper Heyford
Oxfordshire
OX25 5HD
UK

Enquiries:

info@everestbiotech.com

Sales:

sales@everestbiotech.com

Tech support:

support@everestbiotech.com

Tel: +44 (0)1869 238326

Fax: +44 (0)1869 238327

US Office

Everest Biotech c/o Abcore

405 Maple Street, Suite A106
Ramona,
CA 92065
USA

Inquiries:

info@everestbiotech.com

Sales:

usasales@everestbiotech.com

Tech support:

support@everestbiotech.com

Tel: 888-320-4628 (toll-free)

Fax: 888-841-9041

www.everestbiotech.com

**Research Use Only. Not for
diagnostic or therapeutic use.**

EB11071 - Goat Anti-GAD25 / GAD67 Antibody

Size: 100µg specific antibody in 200µl



Target Protein

Principal Names: 67 kDa glutamic acid decarboxylase, FLJ45882, GAD, GAD-67, glutamate decarboxylase 1, glutamate decarboxylase 1 (brain, 67kDa), glutamate decarboxylase 67 kDa isoform, OTTHUMP00000204990, OTTHUMP00000204993, OTTHUMP00000204994, OTTHUMP00000204995, SCP, GAD1

Official Symbol: GAD1

Accession Number(s): NP_038473.2; NP_000808.2

Human GeneID(s): [2571](#)

Important Comments: This antibody is expected to recognize both reported isoforms (NP_038473.2; NP_000808.2).

Immunogen

Peptide with sequence C-QRTNSLEEKSR, from the internal region of the protein sequence according to NP_038473.2; NP_000808.2.

Please note the [peptide](#) is available for sale.

Purification and Storage

Purified from goat serum by ammonium sulphate precipitation followed by antigen affinity chromatography using the immunizing peptide.

Supplied at 0.5 mg/ml in Tris saline, 0.02% sodium azide, pH7.3 with 0.5% bovine serum albumin.

Aliquot and store at -20°C. Minimize freezing and thawing.

Applications Tested

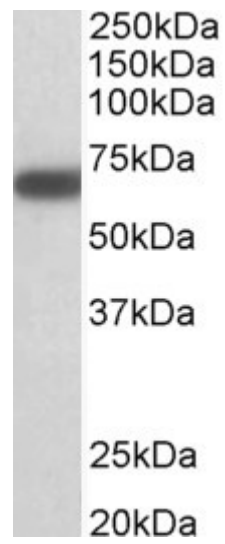
Peptide ELISA: antibody detection limit dilution 1:8000.

Western blot: Approx 70kDa band observed in Mouse Brain lysates (calculated MW of 66.6kDa according to Mouse NP_032103.2). Recommended concentration: 1-3µg/ml.

Species Reactivity

Tested: Mouse

Expected from sequence similarity: Human, Mouse, Rat, Pig, Dog, Cow



EB11071 (1 μ g/ml) staining of Mouse Brain lysate (35 μ g protein in RIPA buffer). Primary incubation was 1 hour.
Detected by chemiluminescence.