



UK Office

Everest Biotech Ltd

Cherwell Innovation Centre
77 Heyford Park
Upper Heyford
Oxfordshire
OX25 5HD
UK

Enquiries:

info@everestbiotech.com

Sales:

sales@everestbiotech.com

Tech support:

support@everestbiotech.com

Tel: +44 (0)1869 238326

www.everestbiotech.com

**Research Use Only. Not for
diagnostic or therapeutic use.**

EB07710 - Goat Anti-Galectin 3 Antibody

Size: 100µg specific antibody in 200µl



Target Protein

Principal Names: LGALS3, lectin, galactoside-binding, soluble, 3, CBP35, GAL3, GALBP, GALIG, LGALS2, MAC2, IgE-binding protein, MAC-2 antigen, carbohydrate-binding protein 35, galactose-specific lectin 3, galectin 3, galectin-3 internal gene, laminin-binding protein, lectin, galactoside-binding, soluble, 3 (galectin 3)

Official Symbol: LGALS3

Accession Number(s): NP_002297.2

Human GeneID(s): [3958](#)

Immunogen

Peptide with sequence CNTKLDNNWGREERQ, from the internal region of the protein sequence according to NP_002297.2.

Please note the [peptide](#) is available for sale.

Purification and Storage

Purified from goat serum by ammonium sulphate precipitation followed by antigen affinity chromatography using the immunizing peptide.

Supplied at 0.5 mg/ml in Tris saline, 0.02% sodium azide, pH7.3 with 0.5% bovine serum albumin.

Aliquot and store at -20°C. Minimize freezing and thawing.

Applications Tested

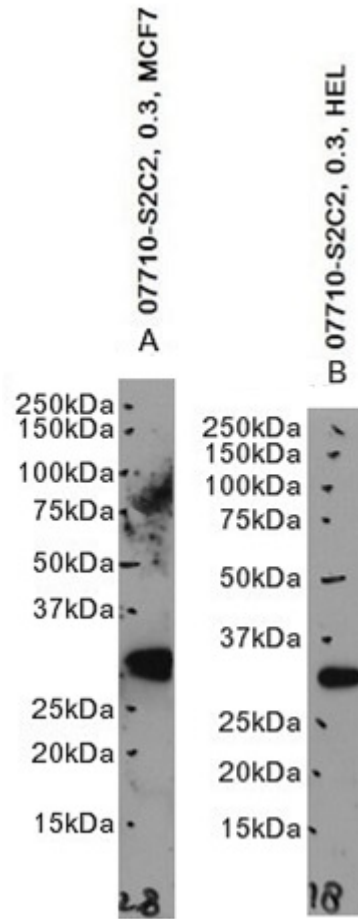
Peptide ELISA: antibody detection limit dilution 1:128000.

Western blot: Approx. 28kDa band observed in Human Colon, Lung and Colorectal Cancer lysates, and approx. 30kDa in lysates of cell lines HeLa and MCF7 (calculated MW of 26.2kDa according to NP_002297.2). Recommended concentration: 0.3-1µg/ml. Primary incubation 1 hour at room temperature.

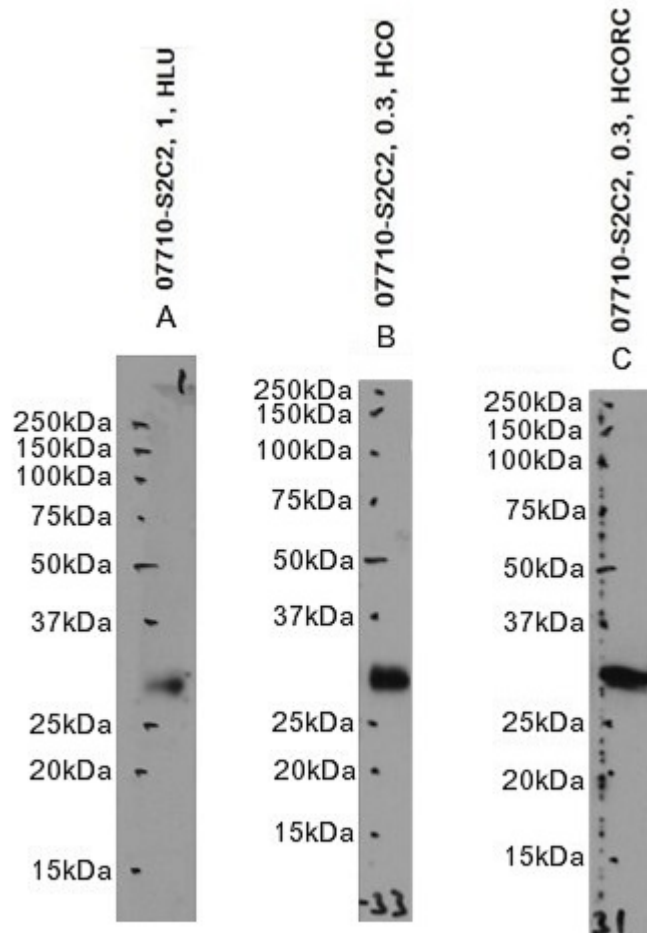
Species Reactivity

Tested: Human

Expected from sequence similarity: Human



EB07710 optimised QC. Primary incubation 1 hour at room temperature.
 Images A, B: MCF7 and HeLa cell lysate at primary Ab concentration 0.3ug/ml. (Loaded 35µg protein in RIPA buffer, per lane). Detected by chemiluminescence.



EB07710 optimised QC. Primary incubation 1 hour at room temperature.
 Image A: Human Lung lysate at primary Ab concentration 1ug/ml. Images B, C: Human Colon and Colorectal Cancer lysate at primary Ab concentration 0.3ug/ml. (Loaded 35µg protein in RIPA buffer, per lane). Detected by chemiluminescence.