



UK Office

Everest Biotech Ltd

Cherwell Innovation Centre
77 Heyford Park
Upper Heyford
Oxfordshire
OX25 5HD
UK

Enquiries:

info@everestbiotech.com

Sales:

sales@everestbiotech.com

Tech support:

support@everestbiotech.com

Tel: +44 (0)1869 238326

Fax: +44 (0)1869 238327

US Office

Everest Biotech c/o Abcore

405 Maple Street, Suite A106
Ramona,
CA 92065
USA

Inquiries:

info@everestbiotech.com

Sales:

usasales@everestbiotech.com

Tech support:

support@everestbiotech.com

Tel: 888-320-4628 (toll-free)

Fax: 888-841-9041

www.everestbiotech.com

**Research Use Only. Not for
diagnostic or therapeutic use.**

EB10775 - Goat Anti-galectin-3 (mouse) Antibody

Size: 100µg specific antibody in 200µl



Target Protein

Principal Names: Lgals3, lectin, galactose binding, soluble 3, GBP, L-34, Mac-2, gal3, 35 kDa lectin, CBP 35, L-34 galactoside-binding lectin, OTTMUSP00000043689, OTTMUSP00000043690, carbohydrate-binding protein 35, gal-3, galactose-specific lectin 3

Official Symbol: Lgals3

Accession Number(s): NP_034835.1

Non-Human GeneID(s): 16854 (mouse)

Important Comments: Reported variants represent identical protein: NP_001139425.1, NP_034835.1

Immunogen

Peptide with sequence C-NANRIVLDFRRGND, from the internal region of the protein sequence according to NP_034835.1.

Please note the [peptide](#) is available for sale.

Purification and Storage

Purified from goat serum by ammonium sulphate precipitation followed by antigen affinity chromatography using the immunizing peptide.

Supplied at 0.5 mg/ml in Tris saline, 0.02% sodium azide, pH7.3 with 0.5% bovine serum albumin.

Aliquot and store at -20°C. Minimize freezing and thawing.

Applications Tested

Peptide ELISA: antibody detection limit dilution 1:4000.

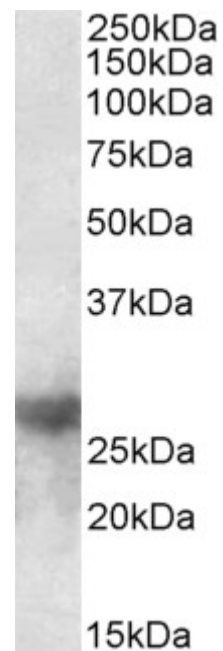
Western blot: Approx 26kDa band observed in Mouse Heart lysates (calculated MW of 27.4kDa according to NP_034835.1). Recommended concentration: 0.5-2µg/ml. Primary incubation was 1 hour.

IHC: Paraffin embedded Human Colon. Recommended concentration: 10µg/ml.

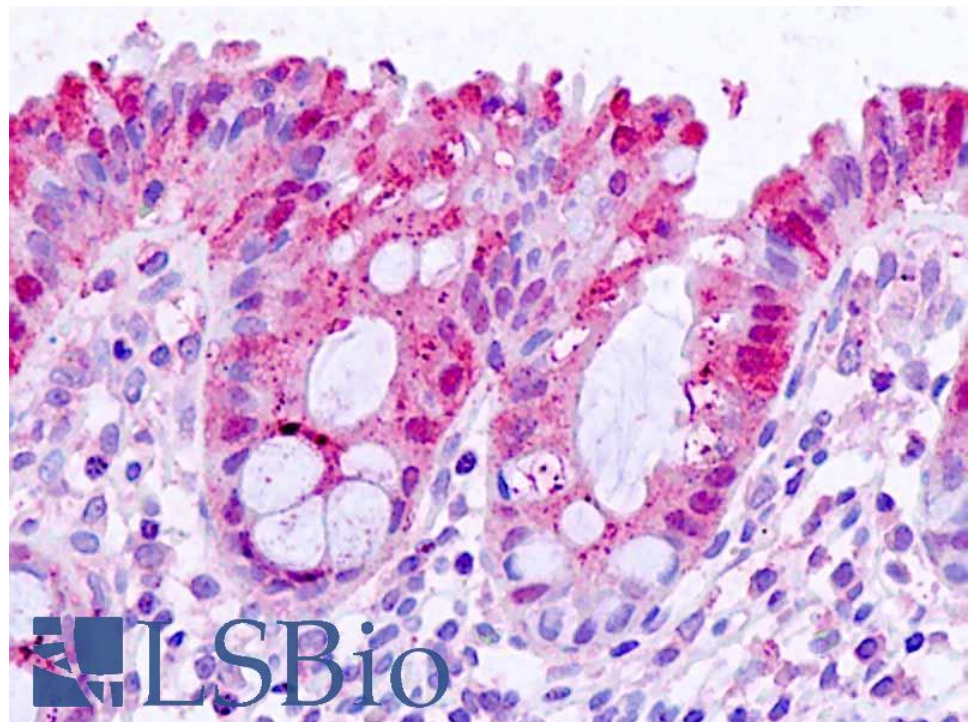
Species Reactivity

Tested: Human, Mouse

Expected from sequence similarity: Mouse



EB10775 (0.5 μ g/ml) staining of Mouse Heart lysate (35 μ g protein in RIPA buffer). Detected by chemiluminescence.



EB10775 (10 μ g/ml) staining of paraffin embedded Human Colon. Steamed antigen retrieval with citrate buffer pH 6, AP-staining.