



UK Office

Everest Biotech Ltd

Cherwell Innovation Centre
77 Heyford Park
Upper Heyford
Oxfordshire
OX25 5HD
UK

Enquiries:

info@everestbiotech.com

Sales:

sales@everestbiotech.com

Tech support:

support@everestbiotech.com

Tel: +44 (0)1869 238326

www.everestbiotech.com

**Research Use Only. Not for
diagnostic or therapeutic use.**

EB07563 - Goat Anti-GALR1 (internal) Antibody

Size: 100µg specific antibody in 200µl



Target Protein

Principal Names: GALR1, galanin receptor 1, GALNR, GALNR1

Official Symbol: GALR1

Accession Number(s): NP_001471.2

Human GeneID(s): [2587](#)

Non-Human GeneID(s): 14427 (mouse), 50577 (rat)

Immunogen

Peptide with sequence C-RSKPGKPRSTTN, from the internal region of the protein sequence according to NP_001471.2.

Please note the [peptide](#) is available for sale.

Purification and Storage

Purified from goat serum by ammonium sulphate precipitation followed by antigen affinity chromatography using the immunizing peptide.

Supplied at 0.5 mg/ml in Tris saline, 0.02% sodium azide, pH7.3 with 0.5% bovine serum albumin.

Aliquot and store at -20°C. Minimize freezing and thawing.

Applications Tested

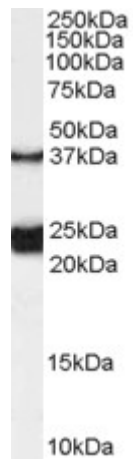
Peptide ELISA: antibody detection limit dilution 1:128000.

Western blot: Approx 24-25kDa and 37kDa bands observed in lysates of Rat Spinal Cord (calculated MW of 24.9kDa according to Rat NP_037090.1 and calculated MW of 38.9kDa according to AAC52438.1 and sp Q62805). Recommended concentration: 0.1-0.3µg/ml.

Species Reactivity

Tested: Rat

Expected from sequence similarity: Human, Mouse, Rat, Dog, Cow



EB07563 (0.1µg/ml) staining of Rat Spinal Cord lysate (35µg protein in RIPA buffer). Primary incubation was 1 hour. Detected by chemiluminescence.