



Everest Biotech Ltd  
Cherwell Innovation Centre  
77 Heyford Park  
Upper Heyford  
Oxfordshire  
OX25 5HD, United Kingdom

[everestbiotech.com](http://everestbiotech.com)

[sales@everestbiotech.com](mailto:sales@everestbiotech.com)

[support@everestbiotech.com](mailto:support@everestbiotech.com)

Tel +44 1869 238326

Fax +44 1869 238327

**Research Use Only. Not for diagnostic or therapeutic use.**

Storage: For long-term storage keep aliquots at -20°C. (Store no longer than 12 months at 4°C). Minimize freezing and thawing.

## EB06377-T - Goat Anti-GAPDH (C Terminus) Loading Control Antibody - Trial

Size: 20µg specific antibody in 40µl



### Target Protein

**Principal Names:** glyceraldehyde 3-phosphate dehydrogenase, aging-associated gene 9 protein, OTTHUMP00000174432, OTTHUMP00000174431, MGC88685, GAPD, G3PD, HGNC:4141, glyceraldehyde-3-phosphate dehydrogenase, GAPDH

**Official Symbol:** GAPDH

**Accession Number(s):** NP\_002037.2

**Human GeneID(s):** [2597](#)

**Important Comments:** GAPDH is constitutively expressed in almost all tissues at high levels. It is therefore a useful marker when a loading/positive control is required in western blotting.

### Immunogen

Peptide with sequence C-HQVVSSDFNSDT, from the C Terminus of the protein sequence according to NP\_002037.2.

Please note the [peptide](#) is available for sale.

### Purification and Storage

Purified from goat serum by ammonium sulphate precipitation followed by antigen affinity chromatography using the immunizing peptide.

Supplied at 0.5 mg/ml in Tris saline, 0.02% sodium azide, pH7.3 with 0.5% bovine serum albumin.

Aliquot and store at -20°C. Minimize freezing and thawing.

### Applications Tested

**Peptide ELISA:** antibody detection limit dilution 1:2000.

**Western blot:** Approx 35kDa band observed in lysates of Human Tonsil, Mouse Spleen, and cell lines HeLa, A431 and 293 (calculated MW of 36.1kDa according to NP\_002037). Recommended concentration: 0.01-0.03µg/ml.

### Species Reactivity

**Tested:** Human, Mouse, Rat

**Expected from sequence similarity:** Human, Mouse, Dog

### Specific References

**This antibody has been successfully used in the following papers:**

Kiepe D, Van Der Pas A, Ciarmatori S, Ständker L, Schütt B, Hoeflich A, Hügel U, Oh J, Tönshoff B.

Defined carboxy-terminal fragments of insulin-like growth factor (IGF) binding protein 2 exert similar mitogenic activity on cultured rat growth plate chondrocytes as IGF-I.

Endocrinology. 2008 Oct;149(10):4901-11.

**PMID:** 18556354

The goat polyclonal antibody used in the following papers was manufactured by us:

Carr AJ, Vugler A, Lawrence J, Chen LL, Ahmado A, Chen FK, Semo M, Gias C, da Cruz L, Moore HD, Walsh J, Coffey PJ.

Molecular characterization and functional analysis of phagocytosis by human embryonic stem cell-derived RPE cells using a novel human retinal assay.

Mol Vis. 2009;15:283-95. Epub 2009 Feb 6.

**PMID:** 19204785

Henson MA, Roberts AC, Salimi K, Vadlamudi S, Hamer RM, Gilmore JH, Jarskog LF, Philpot BD.

Developmental regulation of the NMDA receptor subunits, NR3A and NR1, in human prefrontal cortex.

Cereb Cortex. 2008 Nov;18(11):2560-73.

**PMID:** 18296432

Gerstner JR, Bremer QZ, Vander Heyden WM, Lavaute TM, Yin JC, Landry CF.

Brain fatty acid binding protein (Fabp7) is diurnally regulated in astrocytes and hippocampal granule cell precursors in adult rodent brain.

PLoS One. 2008 Feb 20;3(2):e1631.

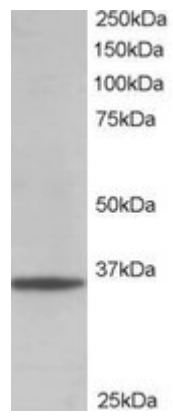
**PMID:** 18286188

Nguyen M, Pace AJ, Koller BH.

Mice lacking NKCC1 are protected from development of bacteremia and hypothermic sepsis secondary to bacterial pneumonia.

J Exp Med. 2007 Jun 11;204(6):1383-93.

**PMID:** 17517966



EB06377 staining (0.01 $\mu$ g/ml) of 293 lysate (RIPA buffer, 35 $\mu$ g total protein per lane). Primary incubated for 1 hour. Detected by western blot using chemiluminescence.