



Everest Biotech Ltd
Cherwell Innovation Centre
77 Heyford Park
Upper Heyford
Oxfordshire
OX25 5HD, United Kingdom

everestbiotech.com

sales@everestbiotech.com

support@everestbiotech.com

Tel +44 1869 238326

Fax +44 1869 238327

Research Use Only. Not for diagnostic or therapeutic use.

Storage: For long-term storage keep aliquots at -20°C. (Store no longer than 12 months at 4°C). Minimize freezing and thawing.

EB07069-T - Goat Anti-GAPDH (Internal) Antibody - Trial

Size: 20µg specific antibody in 40µl



Target Protein

Principal Names: glyceraldehyde 3-phosphate dehydrogenase, aging-associated gene 9 protein, OTTHUMP00000174432, OTTHUMP00000174431, MGC88685, GAPD, G3PD, HGNC:4141, glyceraldehyde-3-phosphate dehydrogenase, GAPDH

Official Symbol: GAPDH

Accession Number(s): NP_002037.2

Human GeneID(s): [2597](#)

Important Comments: GAPDH is constitutively expressed in almost all tissues at high levels. It is therefore a useful marker when a loading/positive control is required in western blotting.

Immunogen

Peptide with sequence C-GVNHEKYDNSLK, from the internal region of the protein sequence according to NP_002037.2.

Please note the [peptide](#) is available for sale.

Purification and Storage

Purified from goat serum by ammonium sulphate precipitation followed by antigen affinity chromatography using the immunizing peptide.

Supplied at 0.5 mg/ml in Tris saline, 0.02% sodium azide, pH7.3 with 0.5% bovine serum albumin.

Aliquot and store at -20°C. Minimize freezing and thawing.

Applications Tested

Peptide ELISA: antibody detection limit dilution 1:4000.

Western blot: Approx 36kDa band observed in Human Liver, Testes and Tonsil lysates and in Mouse Spleen lysates (calculated MW of 36.1kDa according to NP_002037.2).

Recommended concentration: 0.1-0.3µg/ml.

Species Reactivity

Tested: Human

Expected from sequence similarity: Human, Mouse, Rat, Dog

Specific References

This antibody has been successfully used in the following papers:

Carr AJ, Vugler AA, Yu L, Semo M, Coffey P, Moss SE, Greenwood J.

The expression of retinal cell markers in human retinal pigment epithelial cells and their augmentation by the synthetic retinoid fenretinide.

Mol Vis. 2011;17:1701-15.

PMID: 21738400

Carr AJ, Vugler A, Lawrence J, Chen LL, Ahmado A, Chen FK, Semo M, Gias C, da Cruz L, Moore HD, Walsh J, Coffey PJ.

Molecular characterization and functional analysis of phagocytosis by human embryonic stem cell-derived RPE cells using a novel human retinal assay.

Mol Vis. 2009;15:283-95.

PMID: 19204785

Vugler A, Carr AJ, Lawrence J, Chen LL, Burrell K, Wright A, Lundh P, Semo M, Ahmado A, Gias C, da Cruz L, Moore H, Andrews P, Walsh J, Coffey P.

Elucidating the phenomenon of HESC-derived RPE: anatomy of cell genesis, expansion and retinal transplantation.

Exp Neurol. 2008 Dec;214(2):347-61.

PMID: 18926821

The goat polyclonal antibody used in the following papers was manufactured by us:
Chakir K, Daya SK, Aiba T, Tunin RS, Dimaano VL, Abraham TP, Jaques-Robinson KM, Lai EW, Pacak K, Zhu WZ, Xiao RP, Tomaselli GF, Kass DA.

Mechanisms of enhanced beta-adrenergic reserve from cardiac resynchronization therapy.

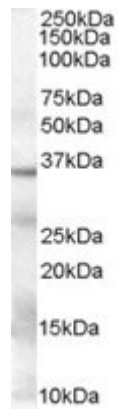
Circulation. 2009 Mar 10;119(9):1231-40.

PMID: 19237665

Schillace RV, Miller CL, Pisenti N, Grotzke JE, Swarbrick GM, Lewinsohn DM, Carr DW.
A-kinase anchoring in dendritic cells is required for antigen presentation.

PLoS One. 2009;4(3):e4807.

PMID: 19277197



EB07069 (0.1 μ g/ml) staining of Human Tonsil Lysate (35 μ g protein in RIPA buffer). Primary incubation was 1 hour. Detected by chemiluminescence.