



UK Office

Everest Biotech Ltd

Cherwell Innovation Centre
77 Heyford Park
Upper Heyford
Oxfordshire
OX25 5HD
UK

Enquiries:

info@everestbiotech.com

Sales:

sales@everestbiotech.com

Tech support:

support@everestbiotech.com

Tel: +44 (0)1869 238326

Fax: +44 (0)1869 238327

US Office

Everest Biotech c/o Abcore

405 Maple Street, Suite A106
Ramona,
CA 92065
USA

Inquiries:

info@everestbiotech.com

Sales:

usasales@everestbiotech.com

Tech support:

support@everestbiotech.com

Tel: 888-320-4628 (toll-free)

Fax: 888-841-9041

www.everestbiotech.com

**Research Use Only. Not for
diagnostic or therapeutic use.**

EB07069-B - Goat Anti-GAPDH (Internal), Biotinylated Antibody

Size: 100µg specific antibody in 200µl



Target Protein

Principal Names: GAPDH, glyceraldehyde-3-phosphate dehydrogenase, G3PD, GAPD, HEL-S-162eP, aging-associated gene 9 protein, epididymis secretory sperm binding protein Li 162eP, peptidyl-cysteine S-nitrosylase GAPDH, glyceraldehyde 3-phosphate dehydrogenase, HGNC:4141, MGC88685

Official Symbol: GAPDH

Accession Number(s): NP_002037.2; NP_001243728.1

Human GeneID(s): [2597](#)

Non-Human GeneID(s): 14433 (mouse), 24383 (rat)

Important Comments: This antibody is expected to recognize both reported isoforms (NP_002037.2; NP_001243728.1). Reported variants represent identical protein: NP_001276674.1, NP_002037.2, NP_001276675.1. GAPDH is constitutively expressed in almost all tissues at high levels. It is therefore a useful marker when a loading/positive control is required in western blotting.

Immunogen

Peptide with sequence C-GVNHEKYDNSLK., from the internal region of the protein sequence according to NP_002037.2; NP_001243728.1.

Please note the [peptide](#) is available for sale.

Purification and Storage

Purified from goat serum by ammonium sulphate precipitation followed by antigen affinity chromatography using the immunizing peptide.

Supplied at 0.5 mg/ml in Tris saline, 0.02% sodium azide, pH7.3 with 0.5% bovine serum albumin.

Aliquot and store at -20°C. Minimize freezing and thawing.

Applications Tested

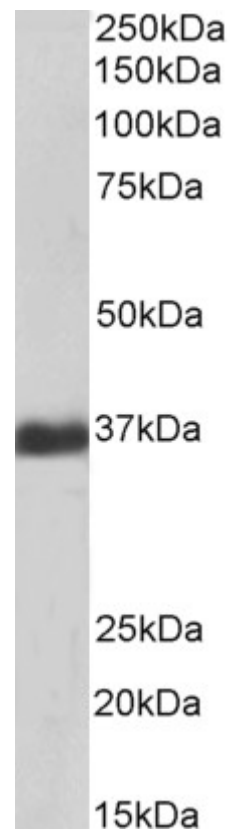
Peptide ELISA: antibody detection limit dilution 1:16000.

Western blot: Approx 36kDa band observed in Human Liver lysates (calculated MW of 36.1kDa according to NP_002037.2). See non-biotinylated parental product's datasheet for further QC data. Recommended concentration: 1-3µg/ml.

Species Reactivity

Tested: Human, Mouse, Rat

Expected from sequence similarity: Human



Biotinylated EB07069 (1µg/ml) staining of Human Liver lysate (35µg protein in RIPA buffer), exactly mirroring its parental non-biotinylated product. Primary incubation was 1 hour. Detected by chemiluminescence, using streptavidin-HRP and using NAP blocker as a substitute for skimmed milk.