

UK Office

Everest Biotech Ltd

Cherwell Innovation Centre
77 Heyford Park
Upper Heyford
Oxfordshire
OX25 5HD
UK

Enquiries:

info@everestbiotech.com

Sales:

sales@everestbiotech.com

Tech support:

support@everestbiotech.com

Tel: +44 (0)1869 238326

www.everestbiotech.com

**Research Use Only. Not for
diagnostic or therapeutic use.**

EB07992 - Goat Anti-GCC185 Antibody

Size: 100µg specific antibody in 200µl



Target Protein

Principal Names: GCC2, GRIP and coiled-coil domain containing 2, GCC185, KIAA0336, CLL-associated antigen KW-11, CTCL tumor antigen se1-1, GRIP and coiled-coil domain-containing 2, GRIP coiled-coil protein GCC185, (Ran-binding protein 2-like 4)

Official Symbol: GCC2

Accession Number(s): NP_055450.1; NP_852118.1

Human GeneID(s): [9648](#)

Important Comments: This antibody is expected to recognise both reported isoforms (NP_055450.1 and NP_852118.1).

Immunogen

Peptide with sequence C-QKLTNKNKIED, from the internal region of the protein sequence according to NP_055450.1; NP_852118.1.

Please note the [peptide](#) is available for sale.

Purification and Storage

Purified from goat serum by ammonium sulphate precipitation followed by antigen affinity chromatography using the immunizing peptide.

Supplied at 0.5 mg/ml in Tris saline, 0.02% sodium azide, pH7.3 with 0.5% bovine serum albumin.

Aliquot and store at -20°C. Minimize freezing and thawing.

Applications Tested

Peptide ELISA: antibody detection limit dilution 1:16000.

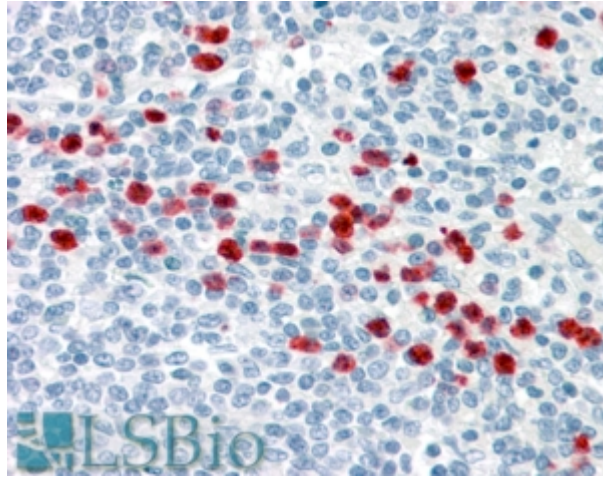
Western blot: Preliminary experiments gave an approx 60kDa band in Human Lymph Node and Testis lysates after 0.03µg/ml antibody staining. Please note that currently we cannot find an explanation in the literature for the band we observe given the calculated size of 185kDa according to NP_055450.1 and of 196kDa according to NP_852118.1. The 60kDa band was successfully blocked by incubation with the immunizing peptide.

IHC: Paraffin embedded Human Spleen, Small Intestine and Kidney. Recommended concentration: 3.75µg/ml.

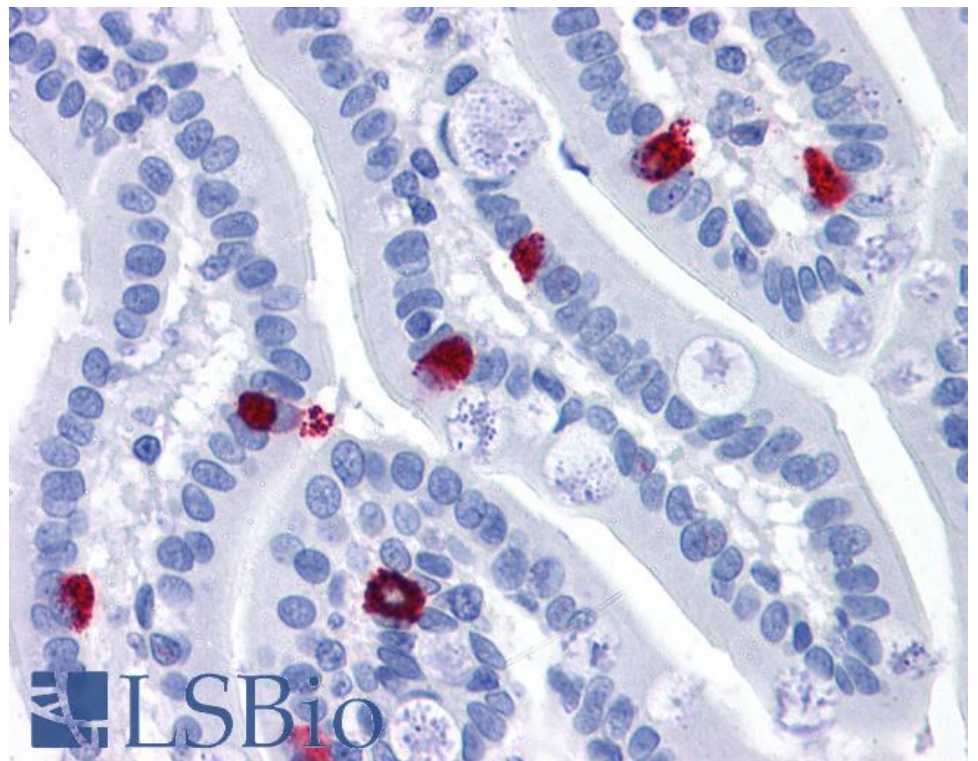
Species Reactivity

Tested: Human

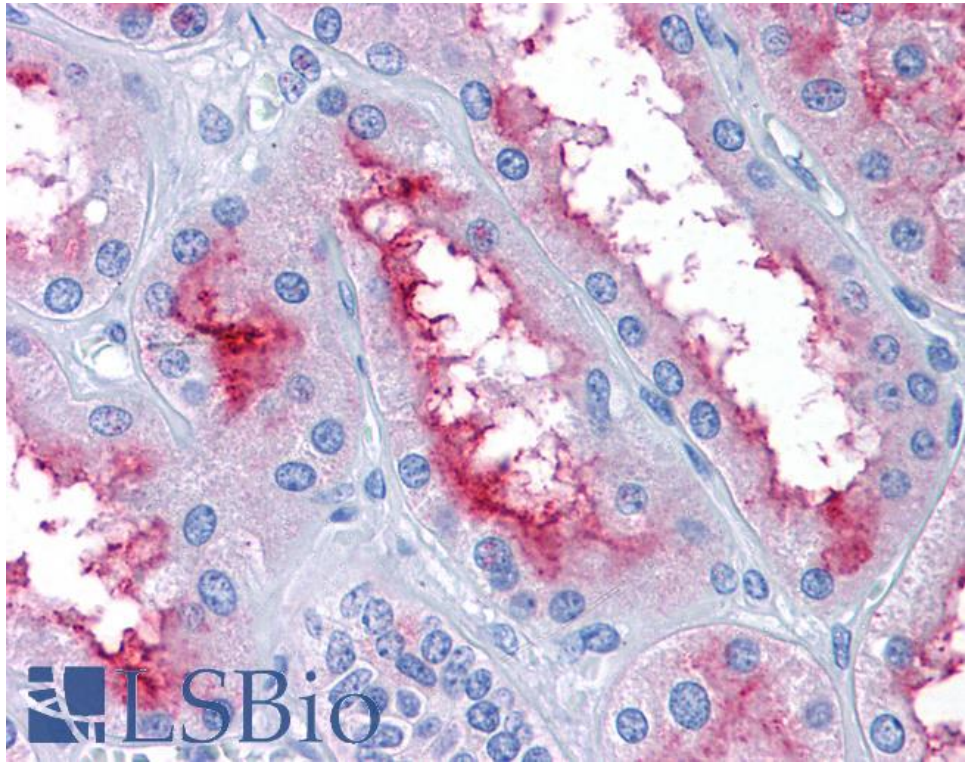
Expected from sequence similarity: Human, Rat



EB07992 (3.75µg/ml) staining of paraffin embedded Human Spleen. Steamed antigen retrieval with citrate buffer pH 6, AP-staining.



EB07992 (3.75µg/ml) staining of paraffin embedded Human Small Intestine. Steamed antigen retrieval with citrate buffer pH 6, AP-staining.



EB07992 (3.75µg/ml) staining of paraffin embedded Human Kidney. Steamed antigen retrieval with citrate buffer pH 6, AP-staining.