



## UK Office

### Everest Biotech Ltd

Cherwell Innovation Centre  
77 Heyford Park  
Upper Heyford  
Oxfordshire  
OX25 5HD  
UK

Enquiries:

[info@everestbiotech.com](mailto:info@everestbiotech.com)

Sales:

[sales@everestbiotech.com](mailto:sales@everestbiotech.com)

Tech support:

[support@everestbiotech.com](mailto:support@everestbiotech.com)

Tel: +44 (0)1869 238326

Fax: +44 (0)1869 238327

## US Office

### Everest Biotech c/o Abcore

405 Maple Street, Suite A106  
Ramona,  
CA 92065  
USA

Inquiries:

[info@everestbiotech.com](mailto:info@everestbiotech.com)

Sales:

[usasales@everestbiotech.com](mailto:usasales@everestbiotech.com)

Tech support:

[support@everestbiotech.com](mailto:support@everestbiotech.com)

Tel: 888-320-4628 (toll-free)

Fax: 888-841-9041

[www.everestbiotech.com](http://www.everestbiotech.com)

**Research Use Only. Not for  
diagnostic or therapeutic use.**

## EB05705 - Goat Anti-GCIP-interacting protein p29 Antibody

Size: 100µg specific antibody in 200µl



### Target Protein

**Principal Names:** GCIP-interacting protein p29, SYF2, SYF2 homolog, RNA splicing factor (*S. cerevisiae*), P29, CBPIN, NTC31, DKFZP564O2082, fSAP29, CCNDBP1 interactor, SYF2 homolog, RNA splicing factor, functional spliceosome-associated protein 29

**Official Symbol:** SYF2

**Accession Number(s):** NP\_056299.1; NP\_997053.1

**Human GeneID(s):** [25949](#)

**Non-Human GeneID(s):** 68592 (mouse), 170933 (rat)

**Important Comments:** This antibody is expected to recognise both reported isoforms.

### Immunogen

Peptide with sequence C-AEIKQNLERGTAV, from the C Terminus of the protein sequence according to NP\_056299.1; NP\_997053.1.

Please note the [peptide](#) is available for sale.

### Purification and Storage

Purified from goat serum by ammonium sulphate precipitation followed by antigen affinity chromatography using the immunizing peptide.

Supplied at 0.5 mg/ml in Tris saline, 0.02% sodium azide, pH7.3 with 0.5% bovine serum albumin.

Aliquot and store at -20°C. Minimize freezing and thawing.

### Applications Tested

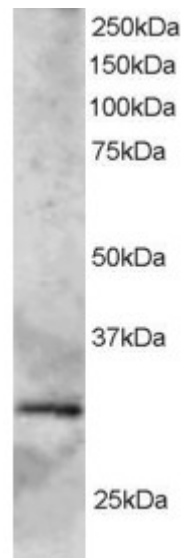
**Peptide ELISA:** antibody detection limit dilution 1:8000.

**Western blot:** Approx 26kDa band seen in Mouse Heart lysate and 30kDa band seen in Human Heart lysate (Predicted MW of 28kDa according to NP\_056299). Recommended for use at 0.5-3µg/ml.

### Species Reactivity

**Tested:** Human, Mouse

**Expected from sequence similarity:** Human, Mouse, Rat, Dog, Cow



EB05705 staining (2 $\mu$ g/ml) of Human Heart lysate (RIPA buffer, 35 $\mu$ g total protein per lane). Primary incubated for 1 hour. Detected by western blot using chemiluminescence.