



## UK Office

### Everest Biotech Ltd

Cherwell Innovation Centre  
77 Heyford Park  
Upper Heyford  
Oxfordshire  
OX25 5HD  
UK

Enquiries:

[info@everestbiotech.com](mailto:info@everestbiotech.com)

Sales:

[sales@everestbiotech.com](mailto:sales@everestbiotech.com)

Tech support:

[support@everestbiotech.com](mailto:support@everestbiotech.com)

Tel: +44 (0)1869 238326

[www.everestbiotech.com](http://www.everestbiotech.com)

**Research Use Only. Not for  
diagnostic or therapeutic use.**

## EB12790 - Goat Anti-GDE1 / MIR16 (aa230-242) Antibody

Size: 100µg specific antibody in 200µl



### Target Protein

**Principal Names:** GDE1, glycerophosphodiester phosphodiesterase 1, 363E6.2, MIR16, RGS16-interacting membrane protein, membrane interacting protein of RGS16, membrane-interacting protein of RGS16

**Official Symbol:** GDE1

**Accession Number(s):** NP\_057725.1

**Human GeneID(s):** [51573](#)

**Non-Human GeneID(s):** 56209 (mouse), 60418 (rat)

### Immunogen

Peptide with sequence C-SLSHTGDGKPRYD, from the internal region of the protein sequence according to NP\_057725.1.

Please note the [peptide](#) is available for sale.

### Purification and Storage

Purified from goat serum by ammonium sulphate precipitation followed by antigen affinity chromatography using the immunizing peptide.

Supplied at 0.5 mg/ml in Tris saline, 0.02% sodium azide, pH7.3 with 0.5% bovine serum albumin.

Aliquot and store at -20°C. Minimize freezing and thawing.

### Applications Tested

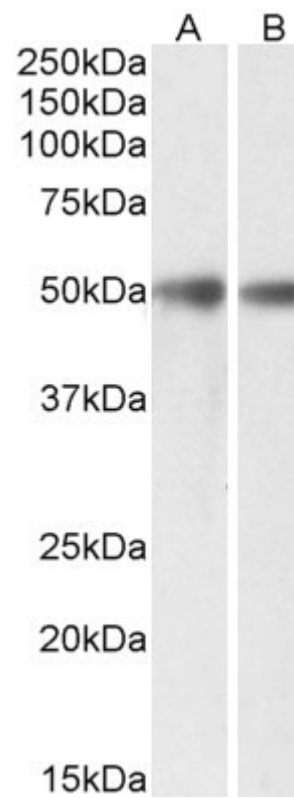
**Peptide ELISA:** antibody detection limit dilution 1:128000.

**Western blot:** Approx 50kDa band observed in Mouse and Rat Brain lysates (calculated MW of 37.7kDa according to NP\_057725.1). The observed molecular weight corresponds to the glycosylated form. Recommended concentration: 0.3-1µg/ml.

### Species Reactivity

**Tested:** Mouse, Rat

**Expected from sequence similarity:** Human, Mouse, Rat, Dog



EB12790 (0.3 $\mu$ g/ml) staining of Mouse (A) and Rat (B) Brain lysates (35 $\mu$ g protein in RIPA buffer). Primary incubation was 1 hour. Detected by chemiluminescence.