



## UK Office

### Everest Biotech Ltd

Cherwell Innovation Centre  
77 Heyford Park  
Upper Heyford  
Oxfordshire  
OX25 5HD  
UK

Enquiries:

[info@everestbiotech.com](mailto:info@everestbiotech.com)

Sales:

[sales@everestbiotech.com](mailto:sales@everestbiotech.com)

Tech support:

[support@everestbiotech.com](mailto:support@everestbiotech.com)

Tel: +44 (0)1869 238326

[www.everestbiotech.com](http://www.everestbiotech.com)

**Research Use Only. Not for  
diagnostic or therapeutic use.**

## EB11449 - Goat Anti-Gelsolin (isoform a) Antibody

Size: 100µg specific antibody in 200µl

### Target Protein

**Principal Names:** actin-depolymerizing factor, ADF, AGEL, brevin, DKFZp313L0718, gelsolin, OTTHUMP00000022011, OTTHUMP00000022014, OTTHUMP00000162202, GSN

**Official Symbol:** GSN

**Accession Number(s):** NP\_000168.1; NP\_937895.1; NP\_001121138.1

**Human GeneID(s):** [2934](#)

**Important Comments:** This antibody is expected to recognize isoform a (NP\_000168.1) only. Reported variants represent identical protein: NP\_001121138.1, NP\_001121139.1  
Reported variants represent identical protein: NP\_001121135.1, NP\_937895.1, NP\_001121134.1, NP\_001121137.1, NP\_001121136.1

### Immunogen

Peptide with sequence PQGRVPEARPNS-C, from the N Terminus of the protein sequence according to NP\_000168.1; NP\_937895.1; NP\_001121138.1.

Please note the [peptide](#) is available for sale.

### Purification and Storage

Purified from goat serum by ammonium sulphate precipitation followed by antigen affinity chromatography using the immunizing peptide.

Supplied at 0.5 mg/ml in Tris saline, 0.02% sodium azide, pH7.3 with 0.5% bovine serum albumin.

Aliquot and store at -20°C. Minimize freezing and thawing.

### Applications Tested

**Peptide ELISA:** antibody detection limit dilution 1:64000.

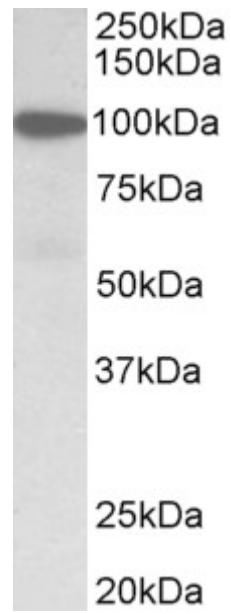
**Western blot:** Approx 100kDa band observed in Human Colon, Duodenum, Heart and Skeletal Muscle lysates (calculated MW of 85.7kDa according to NP\_000168.1).

Recommended concentration: 1-3µg/ml. Primary incubation 1 hour at room temperature.

### Species Reactivity

**Tested:** Human

**Expected from sequence similarity:** Human



EB11449 (1 $\mu$ g/ml) staining of Human Duodenum lysate (35 $\mu$ g protein in RIPA buffer). Primary incubation was 1 hour. Detected by chemiluminescence.