



## UK Office

### Everest Biotech Ltd

Cherwell Innovation Centre  
77 Heyford Park  
Upper Heyford  
Oxfordshire  
OX25 5HD  
UK

Enquiries:

[info@everestbiotech.com](mailto:info@everestbiotech.com)

Sales:

[sales@everestbiotech.com](mailto:sales@everestbiotech.com)

Tech support:

[support@everestbiotech.com](mailto:support@everestbiotech.com)

Tel: +44 (0)1869 238326

Fax: +44 (0)1869 238327

## US Office

### Everest Biotech c/o Abcore

405 Maple Street, Suite A106  
Ramona,  
CA 92065  
USA

Inquiries:

[info@everestbiotech.com](mailto:info@everestbiotech.com)

Sales:

[usasales@everestbiotech.com](mailto:usasales@everestbiotech.com)

Tech support:

[support@everestbiotech.com](mailto:support@everestbiotech.com)

Tel: 888-320-4628 (toll-free)

Fax: 888-841-9041

[www.everestbiotech.com](http://www.everestbiotech.com)

**Research Use Only. Not for  
diagnostic or therapeutic use.**

## EB11488 - Goat Anti-GEM (aa34-46) Antibody

Size: 100µg specific antibody in 200µl



### Target Protein

**Principal Names:** GEM, GTP binding protein overexpressed in skeletal muscle, GTP-binding mitogen-induced T-cell protein, GTP-binding protein GEM, GTP-binding protein overexpressed in skeletal muscle, kinase-inducible Ras-like protein, KIR, MGC26294, OTTHUMP00000226600, OTTHUMP00000226601, RAS-like protein KIR

**Official Symbol:** GEM

**Accession Number(s):** NP\_005252.1

**Human GeneID(s):** [2669](#)

**Important Comments:** Reported variants represent identical protein: NP\_005252.1, NP\_859053.1

### Immunogen

Peptide with sequence C-QKEPHQYSHRNRH, from the internal region of the protein sequence according to NP\_005252.1.

Please note the [peptide](#) is available for sale.

### Purification and Storage

Purified from goat serum by ammonium sulphate precipitation followed by antigen affinity chromatography using the immunizing peptide.

Supplied at 0.5 mg/ml in Tris saline, 0.02% sodium azide, pH7.3 with 0.5% bovine serum albumin.

Aliquot and store at -20°C. Minimize freezing and thawing.

### Applications Tested

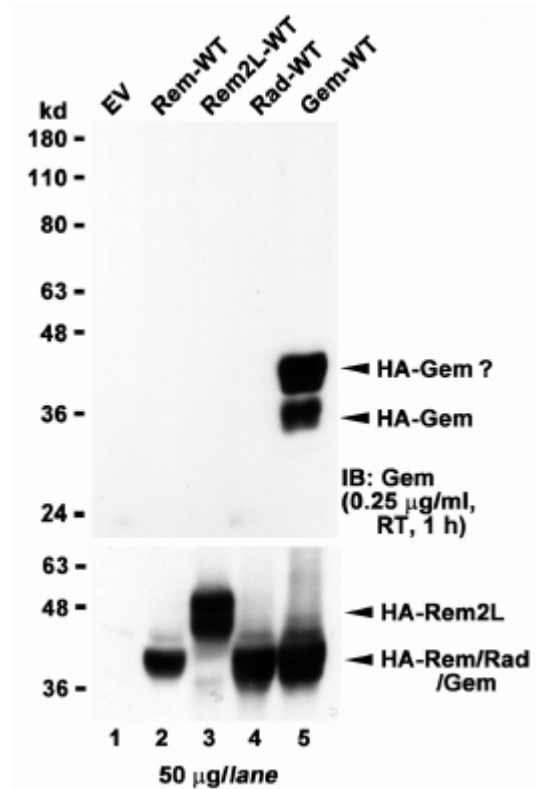
**Peptide ELISA:** antibody detection limit dilution 1:16000.

**Western blot:** In transfected HEK293 transiently expressing Human recombinant GEM bands of approx. 35+45kDa are observed. These bands are not observed in the transfected HEK293 with empty vector and the antibody does not cross-react to related protein such as Rem, Rem2L or Rad. Data provided by Prof. R Andres, Univ. Kentucky, USA. A similar banding pattern we observed in Human Spleen. The calculated molecular size is 33.9kDa according to NP\_005252.1. Recommended concentration: 1-3µg/ml.

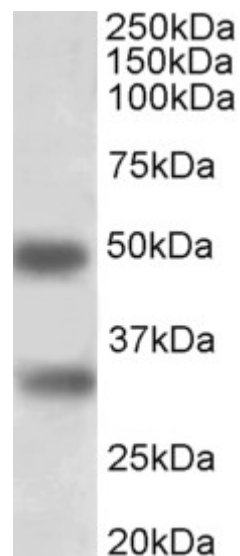
### Species Reactivity

**Tested:** Human

**Expected from sequence similarity:** Human



HEK293 lysate overexpressing full-length Human GEM (HA tagged), mock-transfected HEK293 (EV) and HEK293 transiently expressing GEM-related genes (Rem, Rem2L and Rad) probed with EB11488 (1µg/ml). The same lysates probed with anti-HA tag antibody in the lower panel.



EB11488 (1µg/ml) staining of Human Spleen lysate (35µg protein in RIPA buffer). Primary incubation was 1 hour. Detected by chemiluminescence.