



## UK Office

### Everest Biotech Ltd

Cherwell Innovation Centre  
77 Heyford Park  
Upper Heyford  
Oxfordshire  
OX25 5HD  
UK

Enquiries:

[info@everestbiotech.com](mailto:info@everestbiotech.com)

Sales:

[sales@everestbiotech.com](mailto:sales@everestbiotech.com)

Tech support:

[support@everestbiotech.com](mailto:support@everestbiotech.com)

Tel: +44 (0)1869 238326

Fax: +44 (0)1869 238327

## US Office

### Everest Biotech c/o Abcore

405 Maple Street, Suite A106  
Ramona,  
CA 92065  
USA

Inquiries:

[info@everestbiotech.com](mailto:info@everestbiotech.com)

Sales:

[usasales@everestbiotech.com](mailto:usasales@everestbiotech.com)

Tech support:

[support@everestbiotech.com](mailto:support@everestbiotech.com)

Tel: 888-320-4628 (toll-free)

Fax: 888-841-9041

[www.everestbiotech.com](http://www.everestbiotech.com)

**Research Use Only. Not for  
diagnostic or therapeutic use.**

## EB07478-T - Goat Anti-GFAP Antibody - Trial

Size: 20µg specific antibody in 40µl



### Target Protein

**Principal Names:** GFAP, glial fibrillary acidic protein, FLJ45472, intermediate filament protein

**Official Symbol:** GFAP

**Accession Number(s):** NP\_002046.1

**Human GeneID(s):** [2670](#)

**Non-Human GeneID(s):** 14580 (mouse), 24387 (rat)

**Important Comments:** GFAP is thought to help to maintain astrocyte mechanical strength, as well as the shape of cells but its exact function remains poorly understood, despite the number of studies using it as a cell marker.

### Immunogen

Peptide with sequence C-DGEVIKESKQEHKD, from the C Terminus of the protein sequence according to NP\_002046.1.

Please note the [peptide](#) is available for sale.

### Purification and Storage

Purified from goat serum by ammonium sulphate precipitation followed by antigen affinity chromatography using the immunizing peptide.

Supplied at 0.5 mg/ml in Tris saline, 0.02% sodium azide, pH7.3 with 0.5% bovine serum albumin.

Aliquot and store at -20°C. Minimize freezing and thawing.

### Applications Tested

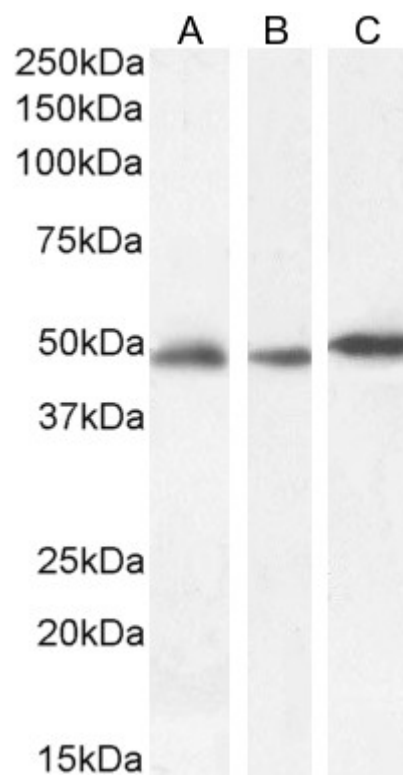
**Peptide ELISA:** antibody detection limit dilution 1:128000.

**Western blot:** Approx. 48kDa band observed in Human Cerebellum and Mouse Brain lysates and approx. 50kDa in Rat Brain lysates (calculated MW of 49.9kDa according to Human NP\_002046.1, Mouse NP\_034407.2 and Rat NP\_058705.2). Recommended concentration: 0.001-0.1µg/ml. Primary incubation 1 hour at room temperature.

### Species Reactivity

**Tested:** Human, Mouse, Rat

**Expected from sequence similarity:** Human, Mouse, Rat, Dog



EB07478 (0.001 $\mu$ g/ml) staining of Human Cerebellum (A), (0.1 $\mu$ g/ml) Mouse Brain (B) and (0.03 $\mu$ g/ml) Rat Brain (C) lysate (35 $\mu$ g protein in RIPA buffer). Detected by chemiluminescence.