



UK Office

Everest Biotech Ltd

Cherwell Innovation Centre
77 Heyford Park
Upper Heyford
Oxfordshire
OX25 5HD
UK

Enquiries:

info@everestbiotech.com

Sales:

sales@everestbiotech.com

Tech support:

support@everestbiotech.com

Tel: +44 (0)1869 238326

Fax: +44 (0)1869 238327

US Office

Everest Biotech c/o Abcore

405 Maple Street, Suite A106
Ramona,
CA 92065
USA

Inquiries:

info@everestbiotech.com

Sales:

usasales@everestbiotech.com

Tech support:

support@everestbiotech.com

Tel: 888-320-4628 (toll-free)

Fax: 888-841-9041

www.everestbiotech.com

**Research Use Only. Not for
diagnostic or therapeutic use.**

EB06885 - Goat Anti-GGA3 Antibody

Size: 100µg specific antibody in 200µl



Target Protein

Principal Names: GGA3, golgi associated, gamma adaptin ear containing, ARF binding protein 3, HGNC:17079, KIAA0154, ADP-ribosylation factor binding protein 3, Golgi-localized, gamma ear-containing, ARF-binding protein 3

Official Symbol: GGA3

Accession Number(s): NP_619525.1; NP_054720.1

Human GeneID(s): [23163](#)

Important Comments: This antibody is expected to recognise both reported isoforms (NP_619525 and NP_054720)

Immunogen

Peptide with sequence C-EQLSTEVGEVDQ, from the C Terminus of the protein sequence according to NP_619525.1; NP_054720.1.

Please note the [peptide](#) is available for sale.

Purification and Storage

Purified from goat serum by ammonium sulphate precipitation followed by antigen affinity chromatography using the immunizing peptide.

Supplied at 0.5 mg/ml in Tris saline, 0.02% sodium azide, pH7.3 with 0.5% bovine serum albumin.

Aliquot and store at -20°C. Minimize freezing and thawing.

Applications Tested

Peptide ELISA: antibody detection limit dilution 1:16000.

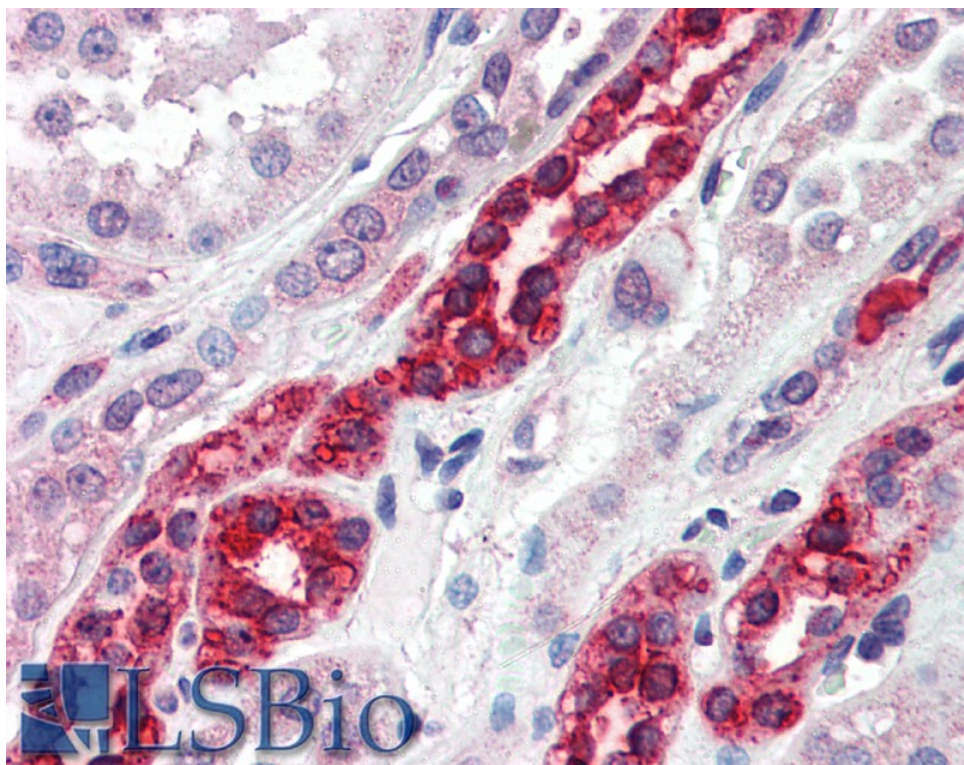
Western blot: Preliminary experiments gave an approx 65kDa band in Mouse and Rat Brain lysates after 0.3µg/ml antibody staining. Please note that currently we cannot find an explanation in the literature for the band we observe given the calculated size of 78.0kDa according to NP_766636.2 and 70.2kDa according to NP_001238996.1. The 65kDa band was successfully blocked by incubation with the immunizing peptide.

IHC: Paraffin embedded Human Kidney. Recommended concentration: 5µg/ml.

Species Reactivity

Tested: Human

Expected from sequence similarity: Human, Mouse, Rat, Dog



EB06885 (5 μ g/ml) staining of paraffin embedded Human Kidney. Steamed antigen retrieval with citrate buffer pH 6, AP-staining.