



UK Office

Everest Biotech Ltd

Cherwell Innovation Centre
77 Heyford Park
Upper Heyford
Oxfordshire
OX25 5HD
UK

Enquiries:

info@everestbiotech.com

Sales:

sales@everestbiotech.com

Tech support:

support@everestbiotech.com

Tel: +44 (0)1869 238326

Fax: +44 (0)1869 238327

US Office

Everest Biotech c/o Abcore

405 Maple Street, Suite A106
Ramona,
CA 92065
USA

Inquiries:

info@everestbiotech.com

Sales:

usasales@everestbiotech.com

Tech support:

support@everestbiotech.com

Tel: 888-320-4628 (toll-free)

Fax: 888-841-9041

www.everestbiotech.com

**Research Use Only. Not for
diagnostic or therapeutic use.**

EB09816 - Goat Anti-MICS1 / GHITM (aa117-127) Antibody

Size: 100µg specific antibody in 200µl



Target Protein

Principal Names: dermal papilla-derived protein 2, DERP2, DKFZp566C0746, FLJ26584, growth hormone inducible transmembrane protein, HSPC282, MICS1, mitochondrial morphology and cristae structure 1, My021, PTD010, TMBIM5, transmembrane BAX inhibitor motif containing, GHITM

Official Symbol: GHITM

Accession Number(s): NP_055209.2

Human GeneID(s): [27069](#)

Non-Human GeneID(s): 290596 (rat)

Immunogen

Peptide with sequence C-PQYVKDRIHST, from the internal region of the protein sequence according to NP_055209.2.

Please note the [peptide](#) is available for sale.

Purification and Storage

Purified from goat serum by ammonium sulphate precipitation followed by antigen affinity chromatography using the immunizing peptide.

Supplied at 0.5 mg/ml in Tris saline, 0.02% sodium azide, pH7.3 with 0.5% bovine serum albumin.

Aliquot and store at -20°C. Minimize freezing and thawing.

Applications Tested

Peptide ELISA: antibody detection limit dilution 1:4000.

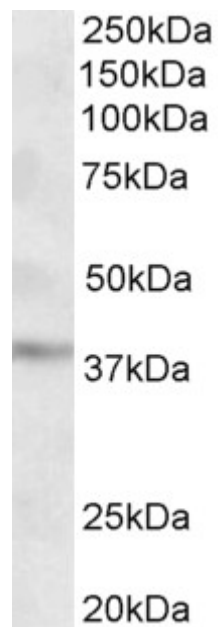
Western blot: Approx 38kDa band observed in Human Brain (Cerebral Cortex and Cerebellum) lysates (calculated MW of 37.2kDa according to NP_055209.2).

Recommended concentration: 1-3µg/ml.

Species Reactivity

Tested: Human

Expected from sequence similarity: Human, Rat, Dog, Cow



EB09816 (2 μ g/ml) staining of Human Cerebral Cortex lysate (35 μ g protein in RIPA buffer). Primary incubation was 1 hour. Detected by chemiluminescence.