



UK Office

Everest Biotech Ltd

Cherwell Innovation Centre
77 Heyford Park
Upper Heyford
Oxfordshire
OX25 5HD
UK

Enquiries:

info@everestbiotech.com

Sales:

sales@everestbiotech.com

Tech support:

support@everestbiotech.com

Tel: +44 (0)1869 238326

Fax: +44 (0)1869 238327

US Office

Everest Biotech c/o Abcore

405 Maple Street, Suite A106
Ramona,
CA 92065
USA

Inquiries:

info@everestbiotech.com

Sales:

usasales@everestbiotech.com

Tech support:

support@everestbiotech.com

Tel: 888-320-4628 (toll-free)

Fax: 888-841-9041

www.everestbiotech.com

**Research Use Only. Not for
diagnostic or therapeutic use.**

EB06876 - Goat Anti-Ghrelin preproprotein Antibody

Size: 100µg specific antibody in 200µl



Target Protein

Principal Names: GHRL, MTLRP, ghrelin, ghrelin precursor, motilin-related peptide, preproghrelin, ghrelin/obestatin prepropeptide, obestatin, ghrelin/obestatin preprohormone, OTTHUMP00000207794, OTTHUMP00000207795, OTTHUMP00000207796, OTTHUMP00000207798, ghrelin, growth hormone secretagogue receptor ligand, ghrelin/obestatin

Official Symbol: GHRL

Accession Number(s): NP_057446.1; NP_001128413.1; NP_001128416.1; NP_001128417.1; NP_001128418.1

Human GeneID(s): [51738](#)

Important Comments: This antibody is expected to recognise all reported isoforms.

Immunogen

Peptide with sequence C-QDILWEEAKEAPADK, from the C Terminus of the protein sequence according to NP_057446.1; NP_001128413.1; NP_001128416.1; NP_001128417.1; NP_001128418.1.

Please note the [peptide](#) is available for sale.

Purification and Storage

Purified from goat serum by ammonium sulphate precipitation followed by antigen affinity chromatography using the immunizing peptide.

Supplied at 0.5 mg/ml in Tris saline, 0.02% sodium azide, pH7.3 with 0.5% bovine serum albumin.

Aliquot and store at -20°C. Minimize freezing and thawing.

Applications Tested

Peptide ELISA: antibody detection limit dilution 1:8000.

IHC: In paraffin embedded Human Placenta shows staining of trophoblast cytoplasm.

Recommended concentration: 2-5µg/ml. Paraffin embedded Human Colon.

Recommended concentration: 2ug/ml.

Species Reactivity

Tested: Human, Rat

Expected from sequence similarity: Human

Specific Reference

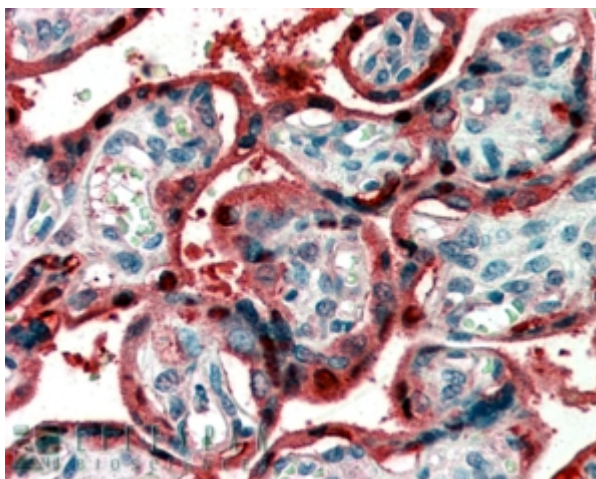
This antibody has been successfully used in ICC on Rat:

Stoyanova II, Wiertz RW, Rutten WL.

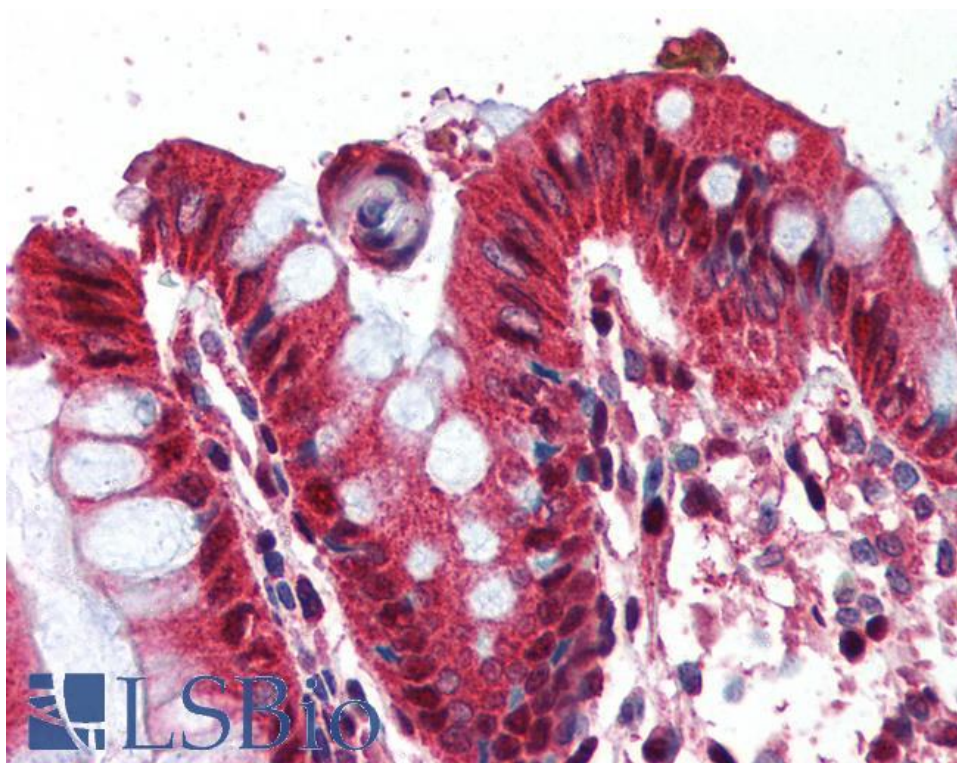
Time-dependent changes in ghrelin-immunoreactivity in dissociated neuronal cultures of the newborn rat neocortex.

Regul Pept. 2009 Nov 27;158(1-3):86-90.

PMID: 19540881



EB06876 (2µg/ml) staining of paraffin embedded Human Placenta. Steamed antigen retrieval with citrate buffer pH 6, AP-staining.



EB06876 (2µg/ml) staining of paraffin embedded Human Colon. Steamed antigen retrieval with citrate buffer pH 6, AP-staining.