

## UK Office

### Everest Biotech Ltd

Cherwell Innovation Centre  
77 Heyford Park  
Upper Heyford  
Oxfordshire  
OX25 5HD  
UK

Enquiries:

[info@everestbiotech.com](mailto:info@everestbiotech.com)

Sales:

[sales@everestbiotech.com](mailto:sales@everestbiotech.com)

Tech support:

[support@everestbiotech.com](mailto:support@everestbiotech.com)

Tel: +44 (0)1869 238326

[www.everestbiotech.com](http://www.everestbiotech.com)

**Research Use Only. Not for  
diagnostic or therapeutic use.**

## EB09482 - Goat Anti-GLUT5 / SLC2A5 Antibody

Size: 100µg specific antibody in 200µl



### Target Protein

**Principal Names:** SLC2A5, solute carrier family 2 (facilitated glucose/fructose transporter), member 5, GLUT5, OTTHUMP00000001704, glucose transporter-like protein 5, solute carrier family 2 (facilitated glucose transporter), member 5

**Official Symbol:** SLC2A5

**Accession Number(s):** NP\_003030.1

**Human GeneID(s):** [6518](#)

### Immunogen

Peptide with sequence C-SEVYPEKEELKE, from the C Terminus of the protein sequence according to NP\_003030.1.

Please note the [peptide](#) is available for sale.

### Purification and Storage

Purified from goat serum by ammonium sulphate precipitation followed by antigen affinity chromatography using the immunizing peptide.

Supplied at 0.5 mg/ml in Tris saline, 0.02% sodium azide, pH7.3 with 0.5% bovine serum albumin.

Aliquot and store at -20°C. Minimize freezing and thawing.

### Applications Tested

**Peptide ELISA:** antibody detection limit dilution 1:8000.

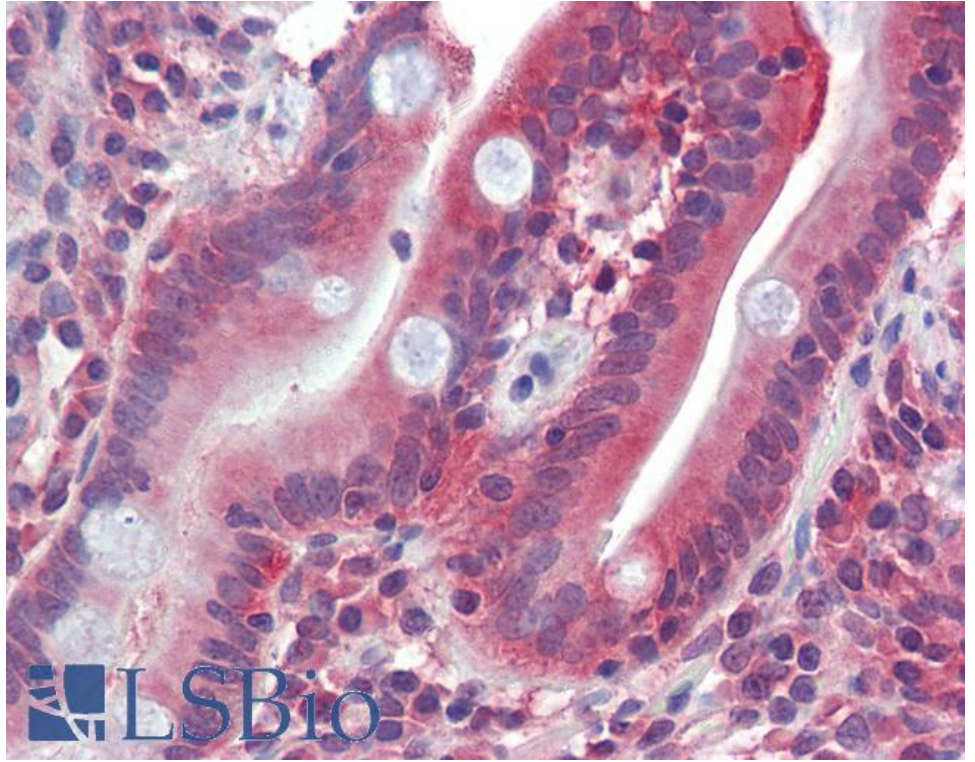
**Western blot:** Preliminary experiments gave an approx 38kDa band in Human Duodenum, Kidney and Skeletal Muscle lysates after 1µg/ml antibody staining. Please note that currently we cannot find an explanation in the literature for the band we observe given the calculated size of 55.0kDa according to NP\_003030.1. The 38kDa band was successfully blocked by incubation with the immunizing peptide.

**IHC:** Paraffin embedded Human Small Intestine. Recommended concentration: 2.5µg/ml.

### Species Reactivity

**Tested:** Human

**Expected from sequence similarity:** Human



EB09482 (2.5µg/ml) staining of paraffin embedded Human Small Intestine. Steamed antigen retrieval with citrate buffer pH 6, AP-staining.