



Everest Biotech Ltd
Cherwell Innovation Centre
77 Heyford Park
Upper Heyford
Oxfordshire
OX25 5HD, United Kingdom

everestbiotech.com

sales@everestbiotech.com

support@everestbiotech.com

Tel +44 1869 238326

Fax +44 1869 238327

Research Use Only. Not for diagnostic or therapeutic use.

Storage: For long-term storage keep aliquots at -20°C. (Store no longer than 12 months at 4°C). Minimize freezing and thawing.

EB06947 - Goat Anti-Glycophorin A Antibody

Size: 100µg specific antibody in 200µl



Target Protein

Principal Names: glycophorin MiIII, glycophorin A (MN blood group), HGpMiIII, GpMiIII, CD235a, recombinant glycophorin A-B Miltenberger-DR, recombinant MiDR, glycophorin Sta type C, glycophorin SAT, glycophorin MiX, glycophorin MiV, glycophorin Mil, glycophorin Erik, glycophorin A, GPA, glycophorin A, erythroid-lineage-specific membrane sialoglycoprotein, Mi.V glycoprotein (24 AA), MNS, MN, HGpSta(C), HGpMiXI, HGpMiX, HGpMiV, GPSAT, GPErik, GPA, GYPA, HGNC:4702, glycophorin A (includes MN blood group)

Official Symbol: GYPA

Accession Number(s): NP_002090.2

Human GeneID(s): [2993](#)

Immunogen

Peptide with sequence C-SVEIENPETSQ, from the C Terminus of the protein sequence according to NP_002090.2.

Please note the [peptide](#) is available for sale.

Purification and Storage

Purified from goat serum by ammonium sulphate precipitation followed by antigen affinity chromatography using the immunizing peptide.

Supplied at 0.5 mg/ml in Tris saline, 0.02% sodium azide, pH7.3 with 0.5% bovine serum albumin.

Aliquot and store at -20°C. Minimize freezing and thawing.

Applications Tested

Peptide ELISA: antibody detection limit dilution 1:4000.

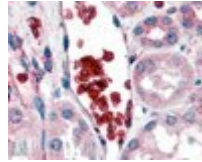
Western blot: Approx 18kDa band observed in human liver lysates (calculated MW of 16.4kDa according to NP_002090.2). Recommended concentration: 1-3µg/ml.

IHC: In paraffin embedded Human Kidney shows bright staining of erythrocytes. Recommended concentration, 2-4µg/ml.

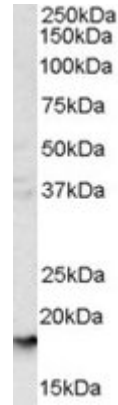
Species Reactivity

Tested: Human

Expected from sequence similarity: Human



EB06947 (2µg/ml) staining of paraffin embedded Human Kidney. Steamed antigen retrieval with citrate buffer pH 6, AP-staining.



EB06947 (1µg/ml) staining of human liver lysate (35µg protein in RIPA buffer). Primary incubation was 1 hour. Detected by chemiluminescence.